

Ke Kula 'o Kamehameha

2024 HŌ'IKE KŪ MAKAHIKI

2024

HŌ'IKE KŪ MAKAHIKI O KE KULA 'O KAMEHAMEHA

KAMEHAMEHA SCHOOLS
ANNUAL REPORT
JULY 1, 2023 - JUNE 30, 2024



IMPRINTED BY TRADITION, INSPIRING TOMORROW

Art is one of the many pathways to infuse our cultural identity into education, community, and stewardship of 'āina.

Traditional and modern Hawaiian artistry came together in these vibrant 'ahu 'ula 'au made by middle school haumāna from Ke Kula 'o Kamehameha Kapālama. Using wood instead of feathers, these regal capes were featured in the Nā'iwa Culture and Fashion Showcase held in May 2024, which was directed and produced by kumu Ikaika Bantolina.





CONTENTS

4

E Ola!

5

Welina

7

Education

11

Community

14

‘Āina Stewardship

16

Endowment

17

Pauahi Foundation’s Impact

20

2023-2024 Donors

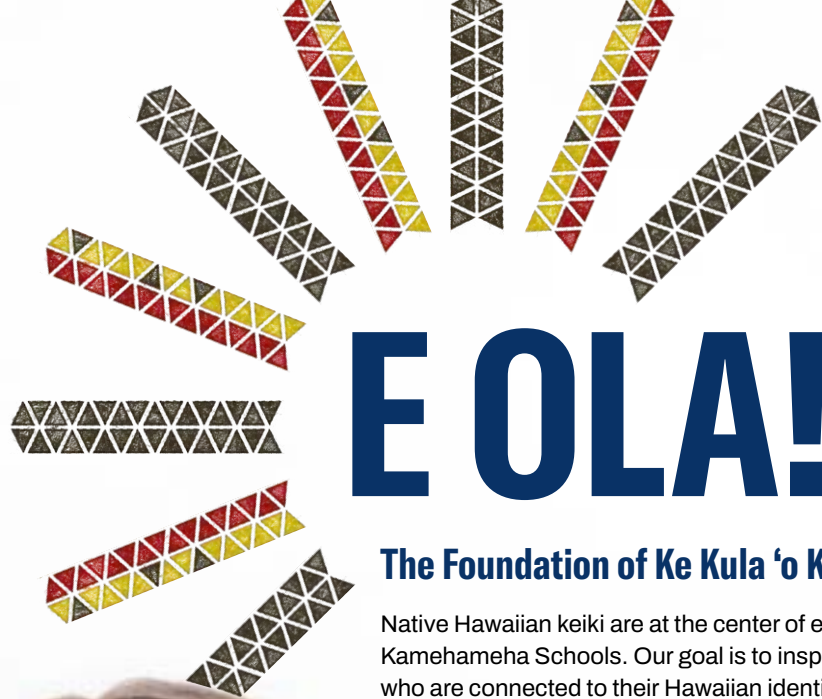
22

2023-2024 Pauahi Foundation
Scholarship Recipients

Kamehameha Schools is a private, educational, charitable trust endowed by the will of Hawaiian Princess Bernice Pauahi Bishop (1831-1884), the great-granddaughter and last direct descendant of King Kamehameha I.

During her lifetime, Princess Pauahi witnessed the rapid decline of the Native Hawaiian population. She knew that education would be key to the survival of her people, and in an enduring act of aloha, she bequeathed to them a precious gift — 375,000 acres of ancestral lands of the royal Kamehameha family and instructions to her trustees that the “rest, residue and remainder of my estate” be used to establish the Kamehameha Schools.

Today, Ke Ali‘i Pauahi’s legacy continues to advance her desire to restore her people through education.



E OLA!

The Foundation of Ke Kula 'o Kamehameha

Native Hawaiian keiki are at the center of everything we do at Kamehameha Schools. Our goal is to inspire E Ola! learners who are connected to their Hawaiian identity and contribute to their communities as 'ōiwi leaders. We believe that such haumāna are best nurtured in engaging, robust Hawaiian culture-based education learning environments.





Aloha mai kākou,

Ua huliāmahi kākou no ka pono o ka lāhui i kēia makahiki ma ke kia ‘ana i ko kākou mana’o ma luna o nā keiki ma o ka ho’oulu a me ka ho’oikaika ‘ana i nā pilina i ka mo’omeheu, pēlā pū me ke kāko’o a me ka ho’omāhuahua ‘ana a’e i ka mākia o nā kānaka ‘ōiwi e alaka’i ana i ka holomua o ke kaiāulu.

‘Ike ‘ia ka holomua o E Ola! ma nā kahua kula ‘ekolu, nā papa K-12, a me nā kula kamali’i he 30 ma o ka holomua o nā haumāna, ka ho’onui ‘ana i ka ‘ōlelo Hawai’i ma nā papa ha’awina, a me ka lilo ‘ana o ka ‘āina ‘o ia kekahi kahua ho’ona’auao nui e a’o ‘ia ai nā ha’awina ko’iko’i e pili pono ana i nā haumāna. ‘O ka pahuhopu ka ho’oulu ‘ana i ka mana’o e a’o mau nā haumāna a me nā limahana, me ka ho’okahua ‘ana i kā kākou mau hana i ke kuana’ike Hawai’i. Ma kēia mau hana a Ke Kula ‘o Kamehameha e ‘ike ‘ia ai ke ko’iko’i o nā ka’ā o ka mauili o ka Hawai’i - ‘o ke olakino, ka ‘āina, ka ‘ōlelo, ka ho’āmana, a pēlā aku.

Ua ho’oikaika ‘ia kā kākou mālama ‘ana i ka ‘āina ma ke ‘ano Hawai’i. ‘O kā kākou pahuhopu ka ho’ōla ‘ana a me ka ho’oulu ‘ana i nā kulāiwi a me ke kaiāulu e pili pū ana.

‘O ka ikaika a me ka ‘onipa’a o ko Lahaina kai ho’oulu i kā kākou hana, ma Ku’ia kā kākou hana ma Ku’ia, i nā hana ho’ōla a lapa’au ho’i i alaka’i ‘ia e ke kaiāulu. I loko o ka pā nō paha a ke Kaua’ula, e hahai ‘ia ana nō nā kukui pio ‘ole o Lahaina e ho’iho’i i ka nani a me ke ola o nēia ‘āina. Lana ka mana’o, e ho’omana’o mau ‘ia ka mo’olelo o kēia wahi a he kumu ho’ohālike nō paha ‘o Lahaina no ka ho’oulu a me ka ho’ōla hou ‘ana i nā kaiāulu ma ka pae ‘āina.

Ma ka hana pū ‘ana me ke kaiāulu e ola ai ke ea o ka ‘āina a me ka mauili o kānaka. Ma ka ‘auamo ‘ana i ke kuleana ‘o ka ho’omau ‘ana i ke ea e ho’omau ‘ia ai ho’i ka ho’oiliina o ka wahine hele lā, Ke Ali’i Bernice Pauahi Bishop, a ola ahuahu ka lāhui.

We cultivated meaningful change for our lāhui during the year by keeping our keiki at the center, activating cultural connections, and amplifying the voices and actions of ‘ōiwi leaders driving community transformation.

The inspiring growth of E Ola! across our three K-12 campuses and 30 preschools can be seen in increased student achievement, the inclusion of more ‘ōlelo Hawai’i throughout our curriculum, and ‘āina serving as essential learning spaces for deeply relevant lessons for our haumāna. We aim to foster lifelong growth mindsets in our learners and employees, grounding ourselves and our work in kuana’ike Hawai’i. Kamehameha Schools’ generational efforts reflect all that is central to Kanaka Maoli well-being – our health, ‘āina, language, agency and so much more.

We enhanced culturally rooted stewardship of our unified ‘āina portfolio. Our vision includes restoring both the vitality of our native landscapes as well as the kaiāulu and people connected to these places.

Inspired by Lahaina’s strength and resilience, our ongoing work in Ku’ia demonstrates a holistic, community-led approach to healing, recovery and revitalization. The journey ahead will be challenging, and we will follow Lahaina ‘ōiwi leaders to help bring back the area’s natural abundance. We envision that this special place will one day serve as a model for how we help restore communities across the pae ‘āina.

In close partnership with our kaiāulu, we will continue to exercise ea, the life and breath that uplifts the mutual well-being of ‘āina and kanaka. As we take on the kuleana to advance ea, we see a future in which the legacy of our beloved founder, Ke Ali’i Bernice Pauahi Bishop, will create and nourish a thriving lāhui.

E OLA MAU!



LEFT:

Kamehameha Schools Trustees (from left): Secretary/Treasurer Jennifer Noelani Goodyear-Ka’ōpua KSK’92, Chair Elliot Kawaiho’olana Mills, Vice Chair Crystal Kauilani Rose KSK’75, Robert K.W.H. Nobriga KSK’91, and Michelle Ka’uhane KSK’86

ABOVE:

Livingston “Jack” Wong
Chief Executive Officer





EDUCATION

Nurturing 'Ōiwi Leadership Through E Ola!

Grounded in the guiding principles of *E Ola!*—a framework rooted in Hawaiian culture—KS campuses and preschools are cultivating a new generation of 'ōiwi leaders. By integrating 'āina-based stewardship and fostering strong connections to culture and land, KS is preparing students to become thoughtful stewards of the environment and champions of Hawaiian values in an ever-changing world.

PAGES
7-10



COMMUNITY

Empowering 'Ōiwi Leaders to Revitalize and Restore

Through collaboration with community leaders, KS is contributing to the holistic restoration and revitalization of Lahaina and other areas across Hawai'i. By equipping 'ōiwi leaders with tools to address complex challenges throughout our pae 'āina, KS is driving innovative solutions and strengthening the foundation of a thriving Hawaiian community.

PAGES
11-13



'ĀINA STEWARDSHIP

Stewarding the Land for Resilient Futures

'Āina is at the heart of building resilient communities at KS, with ongoing efforts to integrate culturally rooted stewardship and unified land management. From advancing sustainable food systems to fostering a deep connection between land and people, KS continues to shape a legacy of resilience and abundance for generations to come.

PAGES
14-15



ENDOWMENT

Building a Lasting Legacy

Kamehameha Schools' endowment provides 97% of the funding that sustains its mission. Guided by a long-term investment strategy, the endowment ensures financial growth and stability, enabling KS to nurture 'ōiwi leaders and create lasting impact for generations to come.

PAGE
16



Cultural knowledge and diplomacy converge at KS Kapālāma for UN ambassador visit

Ma ka lā 7 o Nowemapa i ka makahiki 2023 i mālama 'ia ai he hālāwai na Ke Kula 'o Kamehameha Kapālāma no ka pōpilikia o ka loli aniau. Ua komo pū mai 'o Linda Thomas-Greenfield, he kanaka hanohano, ke kanikela nui ho'i o 'Amelika i ka 'Aha Aupuni Hui Pū 'ia. Ua ho'olohe pono a hāpai mana'o 'o Thomas-Greenfield ma kēia hālāwai ho'okumu o ka Hawai'i Sustainability Development Goals Youth Council.

No nā haumāna makahiki mua he 'umikūmākahi o KS Kapālāma i komo ma kēia hui 'ana, ua 'ike 'ia ko lākou aloha i ke kaiāulu ma ke Ka'āmauloa Pathway, he papahana kula waena ia e a'o ai i ka mauō a me ka mālama 'āina ma o ka hana alaka'ina no'ono'o kīwila.

Ua launa mua ke kanikela nui me kēia po'e haumāna ma mua i ka makahiki 2023 i ko ka 'aha kūkā 'ōpio huaka'i 'ana i ke kikowaena o ka 'Aha Aupuni Hui Pū 'ia ma Nūioka no kekahi 'aha kūkā po'o aupuni no nā Sustainable Developmental Goals o ka 'Aha Aupuni Hui Pū 'ia. Ma kekahi 'ōlelo kūkā 'ana o ka pānela, kālele mana'o nā haumāna i ke ko'iko'i o ka 'imi 'ana i nā ha'ina mai loko mai o ka 'ike kupuna a me ke aloha 'āina. Makahehi kanikela nui i nā haumāna a no ia kumu i ho'omakakoho ai 'o ia i ke kipa 'ana i ke kahua kula ma Kapālāma ma kona wā ma O'ahu.

"A'ole 'oukou o kēia mua aku. No kēia au 'oukou," i 'i akula Ke Kanikela Nui Linda Thomas-Greenfield. "Ke hana nei 'oukou i ka mea e pono ai i kēia wā, 'a'ole i ka wā ma hope aku."

On Nov. 7, 2023, Kamehameha Schools Kapālāma hosted a meeting focused on the global climate crisis that included a highly esteemed guest, Linda Thomas-Greenfield, the U.S. Ambassador to the United Nations. Thomas-Greenfield listened intently and shared mana'o during the inaugural meeting of the Hawai'i Sustainability Development Goals Youth Council.

The 11 KS Kapālāma freshmen who were part of this hui discovered their passion for community through the Ka'āmauloa Pathway, a kula waena program that teaches sustainability and land stewardship through civic-minded leadership.

The ambassador first met these haumāna earlier in 2023 when the youth council traveled to the United Nations headquarters in New York for a summit on the United Nations' Sustainable Development Goals. During a panel discussion, the haumāna emphasized the importance of finding solutions rooted in 'ike kupuna and aloha 'āina. The ambassador was so impressed she made it a priority to come to the Kapālāma campus during an O'ahu stopover.

"You are not our future. You are our present," Thomas-Greenfield said. "You are doing what you need to do now, not later."



KS Maui haumāna earn top honors for native plant project aimed at aiding Lahaina cleanup

No ka pāhana nui makahiki 'ehā a 'elua haumāna kālaimaola AP ma KS Maui, ua kālele 'o Bennett Takahama lāua 'o Kadence Merritt i ka ho'ohana 'ana i nā lā'au 'ōiwi e kōkua i ka ho'oma'ema'e 'ana i nā mea 'awahia a haumia ho'i ma nā wahi e like me ka 'āina 'o Lahaina, kahi i pō'ino i ke ahi. Ua haku lāua i kūkoku o ke kākini kōkua meaola me ka ho'ohana 'ana i ka mau'u pili. Ho'ohana 'ia ke kākini kōkua meaola ana ho'ohālike e ho'ōmo a e ho'ohehe'e ho'i i nā mea haumia ma mua o ke komo 'ana i nā paipu omo wai e hiki aku ana i ke kai.

Ma ka ho'okolohua pinepine 'ana i 'ike ai 'o Takahama lāua 'o Merritt i ka maika'i a'e o kē lāua kūkoku ma mua o ke ana ho'ohālike i ka ho'ōmo 'ana i ka wai.

"He ko'iko'i nō kā māua ho'ohana 'ana i kēia mau lā'au 'ōiwi, a 'o ia ho'i nā lā'au ho'okahi a ko kākou kūpuna i ho'ohana ai ma nā 'ano hana like 'ole," wahi a Merritt.

Ua puka ka pāhana i ke kūlana mua ma ka Hō'ike'ike 'Epekema a Hana 'Enekinia o ke Kalana 'o Maui, a puka aku ho'i ma ke kūlana 'ekolu ma ka Hō'ike'ike 'Epekema a Hana 'Enekinia Kau'āina o Regeneron ma Los Angeles. E ho'omau 'ia ka ho'okolohua 'ana i ke kūkoku me ka mana'o, e ho'ohana 'ia paha ia kākini ma Lahaina a ma nā 'āina o Pauahi kekahi.

KS Maui AP biology haumāna Bennett Takahama and Kadence Merritt centered their senior capstone project on utilizing lā'au 'ōiwi Hawai'i to aid toxic cleanup in places like fire-ravaged Lahaina. They built a prototype bio-filtration sock that utilized live pili grass. Standard bio-filtration socks are used to soak up and dissolve pollutants before they reach storm drains that empty into the ocean.

Through rigorous testing, Takahama and Merritt found their pili grass prototype soaked up more water than a standard one.

"We found it very significant to use these Native Hawaiian plants because we know our ancestors found a wide variety of uses for these plants," said Merritt.

The project took the top prize in the Maui County Regional Science and Engineering Fair and the third prize award at the Regeneron International Science and Engineering Fair in Los Angeles. The prototype is undergoing further experimentation and has potential application in Lahaina and on 'Āina Pauahi.

**\$523
MILLION**

**TOTAL EDUCATIONAL
SPENDING**



\$45M

Spent on debt financing and reserves

\$46M

Spent on other support services

\$56M

Spent on capital projects

\$84M

Spent on scholarships and community investments

\$292M

Spent on K-12 campuses and preschools



**More than 2 of 3
haumāna received full
or partial financial aid**



KS Hawai‘i haumāna apply science ‘ike in loko i‘a restoration project

Ua hai ‘ia he ‘elima haumāna o Ke Kula ‘o Kamehameha Hawai‘i, he mau ukali noi‘i haumāna lākou ma ke kauwela o ka makahiki 2024. No lākou ke kuleana ‘o ka ho‘omohala ‘ana i nā papahana noi‘i e ho‘onui a‘e i ka ‘ike mai loko aku o ke Kumuola Marine Science Education Center. Ma ka ‘āina o Pauahi i ke ahupua‘a ‘o Waiākea e waiho nei he ‘ekolu loko i‘a ma kēia wahi ho‘ona‘auao. Ma laila e ho‘ohana ai nā haumāna i ka ‘ike ‘epekema kai i ho‘omohala ‘ia ma ka lumi papa me ka ho‘āla pū i nā loko i‘a ma ka wehe ‘ana i nā meaola haipilikia ‘ano lāhulu haipilikia ‘ē a‘e.

Wahi a Luke Mead, ke po‘o o Kumuola, ho‘okahua ‘ia ke ka‘akālai i ka ho‘āmana.

“O kēia mana‘o ‘o ka hana pū ‘ana a me ke ‘ano ‘ōiwi no E Ola!, ho‘okahua ‘ia ia mana‘o i ke a‘o ‘ana i ka waiwai o ko nā haumāna ho‘omaopopo ‘ana i kekahi mea no lākou iho a me ka ho‘opa‘a ‘ana i ko lākou mau pilina pono‘i iho. Ma ko nā haumāna komo ‘ana i kēia ‘ano hana e ho‘oikaika ai lākou i ko lākou alaka‘i ‘ana ma ke ‘ano he aloha ‘āina,” i ‘ī akula ‘o Mead.

Five Kamehameha Schools Hawai‘i students were hired as student research aides for the summer of 2024, developing research projects to contribute to the ‘ike coming out of the Kumuola Marine Science Education Center. Located on ‘Āina Pauahi in the Waiākea ahupua‘a, the education center is home to three loko i‘a. Haumāna spend time applying marine science ‘ike developed in the classroom as they also work to restore the loko i‘a by clearing out invasive plants and other species.

Luke Mead, the director of Kumuola, says the approach at the center is geared toward empowerment.

“This idea of collective and ‘ōiwi edge for E Ola! is centered around helping our students to deeply understand something for themselves, make their own relationships and understand it on their own terms. This participation helps haumāna grow in their leadership as ‘āina stewards,” Mead said.



Poi for the Pēpē launched in all KS Preschools regions

No ka ho'okumu 'ia o Poi for the Pēpē, he papahana ia e ho'opili hou ana i nā kānaka i ka mo'omeheu a me ka 'āina ma o ka 'ai kama'āina. Ma ka hana pū 'ana o ke kime o ka Sustainable Industry Development a me Nā Kula Kamali'i o KS me nā mahi'ai kalo he iwakālua a 'oi ma Hawai'i pae 'āina i hā'awi 'ia aku ai ka poi i nā 'ohana i kēlā me kēia mahina a ho'omāhelehele 'ia ho'i 5,000 paona poi a 'oi i ka makahiki kula 2023-2024. 'O nā ha'awina i mālama 'ia ma nā wahi like 'ole, 'o ke ka'ana i nā lekapī, ke kipa 'ana i nā māla kalo, a 'o ke kilo 'ana.

"Mahalo nui 'ia nā papa e mālama ana i ka papahana e ho'omāhelehele ana i ka poi. He paipai maika'i ia i kā ka'u keiki kāne ho'onui 'ana i ka 'ai 'ana i ka poi a me ke a'o 'ana i nā hana mahi'ai kalo. Ua kanu 'ia kēia huli na ke kula i makana mai i kēia makahiki me ka mana'o e 'auamo ai 'o i ke kuleana 'o ka mālama 'ana." - Mai ke Anamana'o 'Ohana, Mei 2024.

Poi for the Pēpē is an initiative aimed at reconnecting people with culture and 'āina through native foods. The partnership between KS' Sustainable Industry Development team, KS Preschools and more than 20 kalo farmers across the pae 'āina delivered fresh poi to 'ohana each month and distributed over 5,000 pounds of poi during the 2023-2024 school year. Learning activities at various regions included sharing recipes, visiting māla kalo (taro gardens) and kilo (observing and tasting).

"I also love that the classes have a poi distribution program. It has encouraged my son to eat more poi and become more excited to learn about planting and cultivating kalo. We planted his kalo plant given to us by the school this year and he understands that it is his kuleana to take care of it." - 'Ohana Survey, May 2024

CAMPUSES & PRESCHOOLS

7,231

Haumāna in preschool to grade 12

679

Total graduates in 2024

531

Kumu at KS preschools and K-12



KS HAWAII

1,178

Enrolled

136

Graduates



KS MAUI

1,125

Enrolled

119

Graduates



KS KAPĀLAMA

3,151

Enrolled

424

Graduates

30

Preschool sites

1,777

Preschool haumāna





KS Kaiāulu, Chaminade University partnership yields 150 early learning full-tuition scholarships

Hmea nui nō nā haumāna liʻiliʻi i ka hoʻoulu ʻana i ka lāhui ikaika. I mea e kākoʻo ai i kēia manaʻo, hoʻoku-mu ʻia ka papahana haʻawina kālā ʻo Muʻo e KS Kaiāulu me Ke Kulanui ʻo Chaminade.

I ke kau hāʻulelau o ka makahiki 2023, makana ʻia he haʻawina kālā uku kula piha i kekahi ʻāuna haumāna he 50 a komo nō lākou i ka papahana laepua keleaʻo ma lalo o Chaminade e aʻo ai a kumu ma Hawaiʻi, me ke kālele nui ʻana i ka hoʻonaʻauao kamaliʻi. He ʻelua makahiki hou aku o kēia papahana, no laila, he 150 haʻawina kālā e makana ʻia ana. He kumu hoʻohālike ka inoa o kēia haʻawina kālā i kā KS pahuhopu ʻo ka hoʻonui ʻana i ka hiki i nā “muʻo” ke komo i ke kula kamaliʻi.

“O nā keiki Hawaiʻi ka makakoho o nā mea a pau a mākou e hana ai ma Ke Kula ʻo Kamehameha. No ka pono a me ke kaulike, koʻikoʻi nō ka hiki i nā kaiāulu ke komo i nā papahana hoʻonaʻauao kamaliʻi. I mea e kō ai kēia pahuhopu, pono nā kumu kula kamaliʻi mākaukau no ke aʻo ʻana i nā keiki,” i ʻāku ai ʻo Waiʻaleʻale Arroyo, ka hope pelekikena o Hiʻialo ma Ke Kula ʻo Kamehameha.

Mālama ʻia nā haumāna Muʻo i nā kākoʻo hou aku, e laʻa me ke kumu nāna e aʻoaʻo a kōkua i ka haumāna i kona wā hele kulanui.

Our littlest learners are foundational to building a thriving lāhui. To help foster that, KS Kaiāulu and Chaminade University have developed the Muʻo Scholarship program.

Beginning in fall 2023, a cohort of 50 people were awarded full-tuition scholarships and entered Chaminade’s online bachelor’s program to become teachers here in Hawaiʻi, prioritizing early learning. This enrollment continues for two additional years for a total of 150 funded scholarships. The scholarship’s inoa, muʻo, which means “to bud,” reflects KS’ commitment to increasing preschool access.

“Native Hawaiian keiki are at the center of everything we do at Kamehameha Schools. Equity and social justice starts with access — access to foundational early learning opportunities in all of our communities. To achieve this, we must ensure we have qualified early learning kumu to welcome and prepare our keiki,” said Waiʻaleʻale Arroyo, vice president of Hiʻialo at Kamehameha Schools.

Muʻo recipients also receive wrap-around services, which include a dedicated success coach who offers mentorship and kōkua throughout student’s collegiate journey.

SUPPORT FOR MAUI'S RECOVERY



- 1 The Ho'ōla Maui fund provided tuition assistance for KS Maui alum Zoe Acantilado's two keiki kāne who attend Sacred Hearts School. The Acantilado's Lahaina home was rendered unlivable after the devastating fire.
- 2 KS Maui kindergarten kumu Cathy Honda, who lost her 'ohana home in the Lahaina fire, received a rousing welcome upon her return to campus. During her time away from school, faculty and staff delivered donations and supplies to help uplift the Honda 'ohana.
- 3 Hundreds of West Maui haumāna received free backpacks filled with school supplies through a collaboration between KS and the Hawai'i State Teachers Association.
- 4 The Pratt 'ohana and numerous others received financial assistance to meet immediate needs through generous donations made to the KS I Mua Maui Fund.
- 5 With support from KS, members of the O'ahu-based lomilomi clinic Pa Iwi Ola lent their healing hands — providing nearly 100 free lomi sessions to community members affected by the wildfires.
- 6 The Kamehameha Schools Kapālama Children's Chorus performed at the free "He Leo Aloha No Maui" concert at the Maui Arts and Cultural Center on April 12, 2024.





87,882

LEARNERS REACHED
THROUGH KS
KAIĀULU

\$83.9M

TOTAL SPENT IN
COMMUNITY

\$30.5M
TO 4,033
LEARNERS

SCHOLARSHIPS

\$10.7M

TO 1,131 LEARNERS
for early learning scholarships

\$5.2M

TO 596 LEARNERS
for K-12 scholarships

\$14.6M

TO 2,306 LEARNERS
for post-high scholarships

COMMUNITY INVESTMENTS

\$53.4
MILLION

SPENT SERVING 43,544 LEARNERS
through various community organizations,
community engagements, internships,
college and career counseling, leadership
and other programming

‘Ōpio leadership takes center stage at FestPAC

He lanakila nui ka makahiki 13 o ka Festival of Pacific Arts & Culture, ka ho’olaule’a nui loa no nā lāhui ‘ōiwi o ka Moana Pākīpika — ma muli o ka nui kānaka i hō’ea mai (he 500,000 a ‘oi aku paha) a me ka ho’oikaika pilina ‘ana ma waena o nā lāhui o ka Moana Pākīpika. No kēia ‘aha ma O’ahu ma lūne i ka makahiki 2024, kapa ‘ia ia ‘aha ma ka inoa ‘o “Ho’oulu Lāhui: Regenerating Oceania.”

Nui nā ‘ano kāko’o like ‘ole a Ke Kula ‘o Kamehameha i ka FestPAC. ‘O kekahi, ‘o ia ho’i ka mālama ‘ana i ka pūka’ina ‘aha kūkā i kapa ‘ia ‘o “Moananuiākea: Pacific Conversations and Cultural Exchange,” he ‘ekolu lā ka lō’ihi, i alaka’i ‘ia e nā ‘ōpio na lākou ke kama’ilio ‘ana no ka nohona a me nā hana no’eau a ka po’e o ka Pākīpika.

‘O kēia ka maka mua o ka mālama ‘ana o ka FestPAC i kēia ‘ano ‘aha kūkā ho’oka’a’ike pa’alula me ke kauka’i ‘ana i nā ‘ōpio hele kula e ‘auamo i nā kuleana ko’iko’i.

Ua hō’ea pāhaneli mai nā kānaka i ka ha’i ‘ōlelo kī alaka’i o ka ‘aha kūkā, na **Jamaica Heolimeleikalani Osorio, Ph.D., KSK’08**. Paipai aku ‘o ia ala i ke anaina, e no’ono’o hou i ka mana’o o ea mai ke kuana’ike ‘ōiwi.

“Makemake ka po’e no lākou ka mana, e mana’o kākou ‘a’ole hiki i ke ao ke loli, loli na’e ke ao i kēlā lā kēia lā,” i ‘ī aku ai ‘o Osorio. “‘O ke ‘ano a me ke ala e loli ai, aia ia iā kākou. E koho pono. E ho’ohuliau. E ho’i hou mai ka mana’o o ea — he ola ia,” wahi a Osorio.

The 13th Festival of Pacific Arts & Culture, the world’s largest celebration of Indigenous Pacific Islanders, proved to be a massive success — both in attendance (over 500,000) and in the strengthening of bonds among island peoples across the Pacific Ocean. Held on O’ahu in June 2024, the event was themed “Ho’oulu Lāhui: Regenerating Oceania.”

Kamehameha Schools’ wide-ranging support of FestPAC included hosting “Moananuiākea: Pacific Conversations and Cultural Exchange,” a three-day conference series led by ‘ōpio that showcased Pacific lifestyles, arts and discourse.

It was the first time FestPAC featured formalized knowledge-sharing seminars and entrusted school-age youth with integral roles.

Hundreds attended the symposium’s keynote speech, delivered by **Jamaica Heolimeleikalani Osorio, Ph.D., KSK’08**. She urged the crowd to reimagine the definition of sovereignty from an Indigenous perspective.

“Those in power want us to believe that the world cannot change, but the world changes every day,” Osorio said. “The nature and direction of that change is up to us all. Make it count. Make it transformative. Make sovereignty mean ea — mean life — again,” Osorio said.



Kamehameha Schools completes historic restoration work in Punalu‘u Valley

“‘A‘ohe ki‘ina hana e hahai ai. ‘A‘ole i hana mua kekahi i ka papahana ho‘iho‘i ma kēia ‘ano nui ma Hawai‘i. ‘A‘ole mākou e kūkulu hale ana — ‘o kā mākou e hana nei ka ho‘iho‘i i ka ‘āina i kona kūlana ma mua, a he hana haku hou nō ke ‘ano.”

No Jesse Frey, ka luna papahana kumupa‘a no Ke Kula ‘o Kamehameha, nāna e hō‘ike‘ike aku i ka holomua o ka papahana ho‘ōla i nā ahupua‘a ma ke awāwa ‘o Punalu‘u ma O‘ahu — he mea i hana mua ‘ole ‘ia. He haku ‘āina nui Ke Kula ‘o Kamehameha ma laila, me nā ‘eka he 3,600 a ‘oi aku paha a emi mai paha ‘o ia ho‘i he 60 pākēneka o ka ‘āina ma Punalu‘u.

Ma ka makahiki 2007, ua kono ‘o KS i ke kaiāulu e hāpai mana‘o no kēia papahana ho‘ōla ahupua‘a, a no laila paha i nui ai ka po‘e i hō‘ea ma ka ‘aha e ho‘olaule‘a ana i ka ho‘okō ‘ia o ka hana ma ka lā 7 o ‘Okakopa 2023.

Eia nā pahuhopu o ka Punalu‘u Stream Restoration Project:

- Ho‘iho‘i hou i nā ka‘ina hana ma nā kahawai a me ka ‘āina kula
- E ho‘ēmi i ka pā o ka ‘āina i ka wai hālana
- E mālama i nā kumuwaiwai mo‘omeheu a kūlohelohe
- Ho‘onui i ke komo ‘ana mai o ke kaiāulu
- E a‘o i ka ‘ike ‘āina

“He mea nui ka palekana o ke kaiāulu no kēia papahana, a ma o ka mālama ‘ana i kēia mau ‘āina e ho‘okā‘oi aku ai mākou i ka mauō mahi‘ai a e ho‘oulu ho‘i i nā wā e a‘o ‘ia ai ka po‘e, pēlā pū me ka hānai ‘ana i ke kaiāulu olakino maika‘i me ka mālama pū i kona mau hi‘ohi‘ona kua‘āina,” i ‘ākuia ‘o **Jason Jeremiah KSK’00**, ke po‘o o kēia papahana no Ke Kula ‘o Kamehameha.

“There was no road map for this. No one had ever done a restoration project of this magnitude ever in Hawai‘i. We’re not building a development here — we’re restoring the land, and that process was innovative.”

Jesse Frey, a senior capital project manager for Kamehameha Schools, is highlighting the successful — and unprecedented — ahupua‘a restoration project in Punalu‘u Valley on O‘ahu. Kamehameha Schools is a major landowner here, owning approximately 3,600 acres or 60 percent of lands in Punalu‘u.

Back in 2007, KS initiated community consultation for this restoration effort, and there was a large kaiāulu presence at the completion celebration event on Oct. 7, 2023.

The goals of the Punalu‘u Stream Restoration Project were as follows:

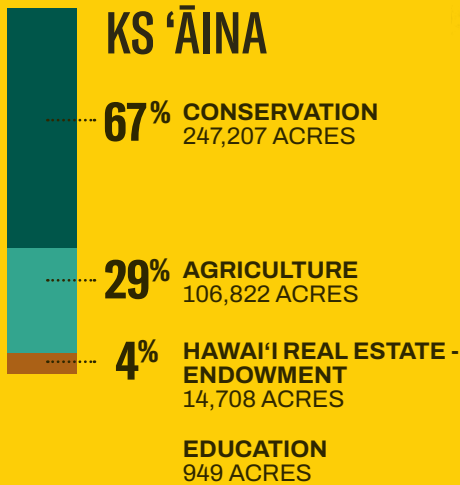
- Restore stream and floodplain processes
- Mitigate flood impacts
- Protect cultural and natural resources
- Increase community engagement
- Conduct ‘āina-based learning

“Community safety is a prime focus of this project, and it is our hope that through stewardship of these lands, we can also improve agricultural sustainability, stimulate learning opportunities, and nurture a healthy and vibrant community while perpetuating its rural character,” said **Jason Jeremiah KSK’00**, Kamehameha Schools’ lead on this project.

\$60M

INVESTED (net of agricultural rents) to steward agricultural and conservation

‘āina across Hawai‘i and support and contribute to, along with others, healing, recovery, resolution and restoration efforts following the Lahaina wildfires.



Total statewide renewable energy capacity located on KS ‘āina



37.5% of Hawai‘i’s commercial solar energy capacity



45% of Hawai‘i’s utility-scale wind energy capacity



Mahi‘ai Match-Up highlights Kamehameha Schools’ commitment to local food systems

E mohala mai ana kā Ke Kula ‘o Kamehameha ho‘ohiki e ho‘oi-kaika i nā ‘ōnaehana ‘ai kūloko. ‘O kekahi la‘ana ke kākō‘o mau ‘ana i ka Mahi‘ai Match-Up, he ho‘okūkū papahana ‘oihana mahi‘ai e ho‘oulu ‘ia ai nā nā ha‘ina hou no nā nīnau mahi‘ai hou, nā pilina kaiāulu, a pēlā pū me nā ala ho‘ona‘auao.

Ma Nowemapa i ka makahiki 2023, na KS a me Ulupono Initiative i makana aku iā ‘Ulu Mana, Piko Provisions, a me Ho‘oulu Punalu‘u no ka makahiki 2023.

Ho‘omākaukau ‘o ‘Ulu Mana, na Loren Shoop, i nā mea ‘ai māmā lanakila mai nā mea kanu i ho‘oulu kūloko ‘ia, e la‘a me ka ‘ulu, ka mai‘a, ka māmaki, a pēlā aku. Na kēia ‘oihana e mālama i ka Hawai-ian Farmers Market, he hui kālepa ia e kū‘ai aku ana i nā huahana kūloko like ‘ole he 200 a ‘oi ka nui mai nā pā‘oihana li‘ili‘i. Makana ‘ia he \$25,000 i ia ‘oihana.

Ho‘olako ‘o Piko Provisions, i ho‘okumu ‘ia na ka CEO ‘o Ethan West, i ka mea ‘ai i ho‘oulu piha ‘ia a hana piha ‘ia ho‘i ma Hawai‘i no nā keiki ‘u‘uku. Makana ‘ia he \$10,000 i ia ‘oihana.

Kamehameha Schools’ commitment to enhancing local food systems continues to blossom. One example of this is our ongoing support for Mahi‘ai Match-Up, an agricultural business plan competition to inspire innovative agricultural solutions, foster community connections and develop educational pathways.

In November 2023, KS and Ulupono Initiative named ‘Ulu Mana, Piko Provisions and Ho‘oulu Punalu‘u as its 2023 winners.

‘Ulu Mana, led by Loren Shoop, creates award-winning snacks from locally grown crops including ‘ulu, mai‘a, māmaki and others. The company also operates Hawaiian Farmers Market, a retailer of more than 200 locally made products from small producers. They were awarded \$25,000.

Piko Provisions, founded by CEO Ethan West, supplies 100% locally grown and locally made food products for infants. They were awarded \$10,000.

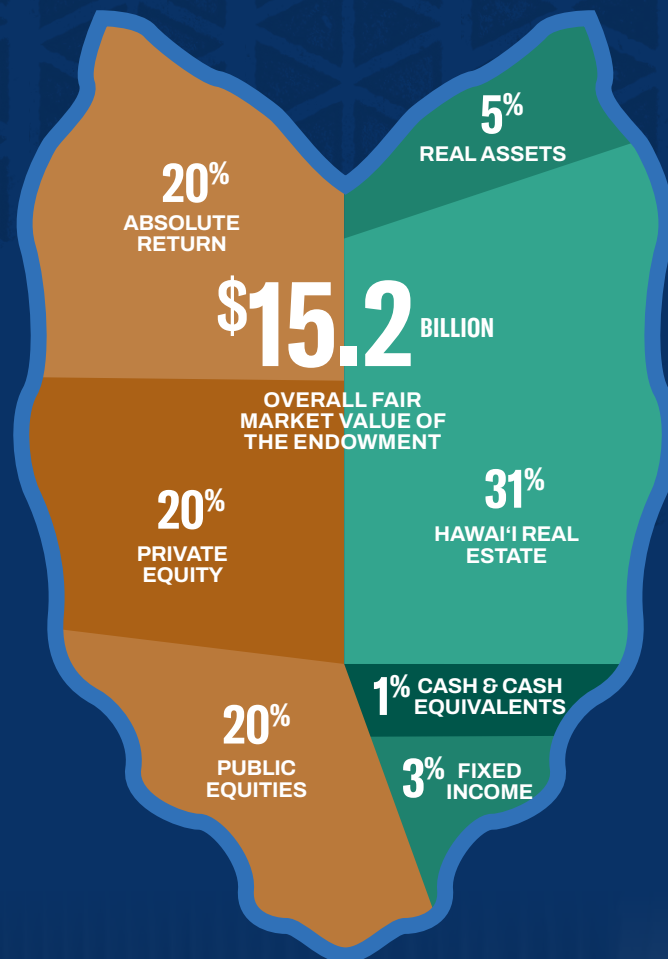


ENDOWMENT

Sustaining legacy and empowering futures

The enduring impact of Kamehameha Schools' mission is made possible by its \$15.2 billion endowment, which provides 97% of the funding. With a globally diversified financial assets portfolio of \$10.5 billion and \$4.7 billion in Hawai'i real estate, the endowment is a cornerstone of KS' ability to deliver lasting value.

The goal of Kamehameha Schools' endowment is to provide superior risk-adjusted long-term returns to support its mission in perpetuity. The 10-year return added value versus a policy-weighted average of market benchmarks.



INVESTMENT RETURNS

	10 Years Annualized	5 Years Annualized	1 Year
Endowment Fund	71%	8.5%	7.4%
Policy Benchmark	5.7%	6.2%	2.9%



Ke Ali'i Pauahi's legacy lives on through YOU



ALOHA MAI E NĀ KOA O KAMEHAMEHA,

Ke Ali'i Bernice Pauahi Pākī Bishop does not walk alone because her vision is amplified by our generous donors.

This Annual Report is an opportunity to reflect on the accomplishments of the past year, while also looking ahead to more opportunities to help Native Hawaiian haumāna in their pursuit of a quality education.

I'm extremely grateful for the support of KS Alumni, employees, corporations and members of the community as the Pauahi Foundation stewards Princess Pauahi's vision through their gifts. Helping Native Hawaiian learners is the key driver for our team and I'm excited for what's to come as we keep Ke Ali'i Pauahi's vision at the forefront of everything we do.

With the help of our donors, we raised more than \$2.2 million toward scholarships and program support, and grew our network of donors to more than 2,000 during the 2024 fiscal year! We distributed nearly 500 scholarship awards, including 6 new endowed scholarship funds. Each of these awards represents an opportunity for haumāna to pursue higher education and for an entire community to benefit from their accomplishments as 'ōiwi leaders.

I'm excited about the Mānowai Scholarship program that has been a tremendous success. This innovative approach to fundraising has broken down barriers for donors who want to make a difference without endowing a full scholarship fund, and qualified recipients who can access these funds quickly.

While I am extremely proud of these accomplishments, there's more work ahead. The Pauahi Foundation's goal is to serve even more scholarship applicants each year and raise money to support early learning, K-12 education, college and 'āina community programming. Please join us today by making a gift at pauahi.org.

Supporting scholarships and campus programs is important as we uplift the next generation of 'ōiwi leaders, and we are grateful for your continued support and collaboration. As we work to refine and implement diverse and innovative giving campaigns, you play an important role in perpetuating Ke Ali'i Pauahi's legacy.

Please stay tuned for updates from our team in the monthly Kahiau e-newsletter and connect with us on social media (@pauahifoundation) to see the latest photos and videos from our events and engagement opportunities. I look forward to seeing you at our KS campuses and across 'Āina Pauahi.

Stay safe and take good care of yourselves and your 'ohana!

Me ka ha'aha'a,

Pono Ma'a ksk'82

Director, Office of Advancement
Executive Director, Pauahi Foundation

Make a Gift to
Pauahi Foundation



PAUHI FOUNDATION'S IMPACT

\$2,264,040

TOTAL FUNDS RAISED

Funds raised were dedicated to scholarships and to support haumāna through Kamehameha Schools programs and initiatives focusing on excellence in education (pre-K-12), mālama 'āina, and college and career.

315

TOTAL NUMBER
OF SCHOLARSHIP
AWARDEES

472

TOTAL NUMBER
OF SCHOLARSHIP
AWARDS

\$968,664

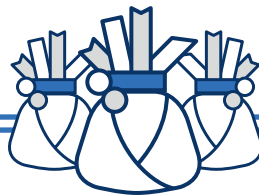
TOTAL SCHOLARSHIP FUNDS
DISBURSED FOR ACADEMIC
YEAR 2023-2024

6

NEWLY ENDOWED
SCHOLARSHIP
FUNDS

2,025

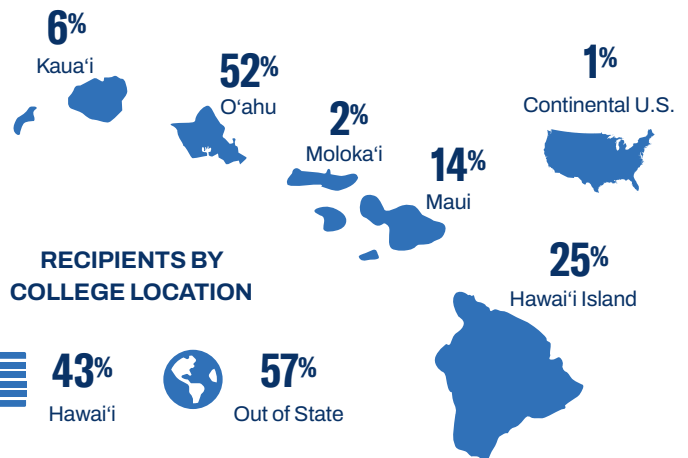
TOTAL NUMBER OF DONORS



RECIPIENTS BY FIELD OF STUDY

	36%	Science & Math
	11%	Business
	10%	Liberal Arts, Arts and Social Sciences
	10%	Health
	9%	Education
	7%	Law
	5%	Hawaiian Culture, Language and History
	4%	Engineering
	4%	Other
	3%	Communications and Journalism
	1%	Vocational and Technical Studies

RECIPIENTS BY RESIDENCE



RECIPIENTS BY COLLEGE LOCATION



Some recipients received multiple scholarships



Lei'ohu Leadership Forum

Ma kēia hālāwai kūkā a nā kānaka hou na lākou e makana aku i ke kālā, kālele 'ia ka ho'āmana 'ia a kāko'o 'ia o nā kānaka e 'imi ana i ka ho'oikaika 'ana i ko lākou mākau alaka'i a ho'olālā ho'i ma o ka launa kanaka 'ana a pēlā pū me ke kama'ilio. Na ka Pauahi Foundation e ho'ākoakoa mai i nā po'okela ma ka 'oihana, ka ho'ona'auao, ke kulekele lehulehu, ka 'epekema, pau pū me ka hana no'eau. Ma kēia 'ano hui 'ana e ho'oka'a'ike ai lākou i ko lākou 'ike a me ka mana'o ho'i me nā kānaka e makana aku ana. Ma ia mau hana e kāko'o ai ka Pauahi Foundation i ka mohala 'ana a'e o nā alaka'i na lākou e haku a ho'opa'a i nā hā'ina hikiāloa maika'i e pono ai ko kākou lāhui.

This brand-new donor gathering was dedicated to empowering and supporting the professional development of individuals seeking to enhance their leadership skills and organizational capabilities through networking and conversation. The Pauahi Foundation brings top leaders in business, education, public policy, science and the arts together through events like this to share their insights and experiences with our donors. Through these efforts, we hope to contribute to the development of leaders that can create effective, long-term solutions that address the greatest needs of our lāhui.



2023-2024 DONORS

Mahalo for entrusting the Pauahi Foundation with your gifts and helping to advance Ke Ali'i Bernice Pauahi Pākī Bishop's vision and legacy. We are grateful for donors who have included the foundation in their charitable giving. Your charitable gifts to the Pauahi Foundation supported aspiring Native Hawaiian students this year with nearly 500 scholarship awards and six new endowed scholarship funds. As an educational institution that transforms Native Hawaiian lives, our mission has never been more relevant. Our giving hui celebrates the breadth and diversity of our donors and the impact of your support.

KEY

- † Deceased
S Kamehameha Schools staff

We are deeply appreciative of the Kamehameha Schools Alumni, faculty and staff who made a gift to the Pauahi Foundation this fiscal year in addition to their dedicated service. All donors listed are recognized for contributions made during the fiscal year from July 1, 2023, to June 30, 2024.

KA HUI KŪLANIHĀKO'I

\$500,000 OR MORE

The fabled lake in the heavens, the source of rain that falls to earth. The overflowing generosity that makes a lasting impact into perpetuity.



KA HUI UA LOKU

\$100,000 – \$499,999

The life-giving, pouring rain. The commitment to uplift the community and a powerful force for change.



KA HUI UA NĀULU

\$50,000 – \$99,999

The sudden, heavy shower replenishing and saturating dry areas to cause growth. The support that makes a lasting impact.

Cristine and Craig Floro
Myron Mitsuyasu

KA HUI KUĀUA

\$25,000 – \$49,999

The drenching, soaking rain. The much-needed sustenance for a thriving and vibrant community.

Julian K. Ako⁶¹
Timothy^S and Wendy Donohue
Jackie Mahi Erickson⁵⁸
Lance Leong^{83,†} and Andrea
Hussey-Leong⁸³
Kamehameha Schools Student
Activities - Hawai'i Campus
Ruby H. Lowe⁶¹
Sarah Ah Hee Nance⁹⁶

KA HUI KO'I AWE

\$10,000 – \$24,999

The light, moving rain that cascades down mountains and creates flowing waterfalls. The giving that makes a clear and visible impact on the community.

Alaka'ina Foundation
Valerie Bartels-Mein
Dr. Helen Kaleleonalani Blaisdell-
Brennan⁸⁰
Sean⁷¹ and Dodie Browne
Jan K. Burns⁷⁹
Cades Schutte LLP
Compass Group USA, Inc.
First Hawaiian Bank
Randall⁶⁸ and Nancy Hee
Darrel^S and Denise Hoke
Insight Consulting, LLC
Corbett and Sandy Kalama
Kamehameha Schools Hawai'i Parents
and Teachers 'Ohana
Nicholas Keyes
Gerald K. Lee⁶⁹
Darlene⁸⁸ and Tux MacAuley
Matson Navigation Company, Inc.
William Henry Kekoa McClellan⁰² and
Nicole Makana Shook McClellan⁰³
Nut Tree Capital
Ponsar Valuation LLC
Trustee Crystal Rose^{75, S} and Rick Towill
Glenn and Lytle⁷⁴ Takemoto
Robert and Jane⁶⁵ Terry
The Lightweaver Foundation
David Wold and Seena Wise⁰¹
Livingston "Jack" Wong, Jr.^S and
Kimi Oyama

KA HUI 'OHU

\$1,000 – \$9,999

The light, misty cloud that covers mountains from top to bottom in great beauty. The beauty that comes from committed giving.

Anonymous (10)
42 Renewables, LLC
A'A Appraisal Services Hawaii, LLC
'Aha Pūnana Leo
Liz⁹³ and Kauhi⁹³ Ahana
Brendan R. Akamu⁷⁹
KeAupuni⁰⁵ and Susan Akina
Matthew⁸⁹ and Karen^{91, S} Alamida
Edward C. Alexander⁶¹
All Aloha Plumbing
Hilarie R. Alomar^S
Nane Aluli
AM Partners, Inc.
Benjamin⁹⁰ and Patricia Ancheta
Pōmaialoha^S and Kamaka'ala²⁷ Apana
Jordann Ares^{98, S}
Armstrong Builders, LLC
Natalie Arrell^S
M. Wai'ale'ale Arroyo^S
Michael⁶⁶ and Chu Cha Asam
Robyn U. Au⁷²
Violet W. Awana
Bank of Hawaii
Dr. Jmi Lilinoe Bassett Asam⁹⁷
Gaye K. K. Beamer
Kawena⁹⁵ and Kekoa⁹¹ Beaupre
Stephanie M. Belloso⁷⁴
BF Tile, Inc.
Ashlynn^S and Duke Book
Alyssa K. B. Braffith^{70, S}
Randy Brandt⁵⁹
Dr. and Mrs. Lawrence Brede, Jr.⁶¹
Brett Hill Management Group
California Bank and Trust



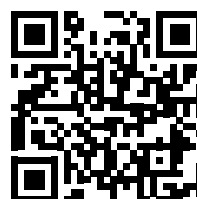
Kamalupono C. Campbell^{99, S}
 Candlestick Capital
 Dane R. K. Carlson^{94, S}
 Caruthers Family Foundation
 Central Pacific Bank Foundation
 Ross P. N. F. Ching⁹⁵
 Dr. Sandra K. Chock-Eng⁶⁶
 Dr. and Mrs. Francis K. Chun⁷⁹
 Duane⁷², Bette and Corinne⁹⁷ Chun
 Ian N. Chun⁹⁵
 City and County of Honolulu -
 Division of Motor Vehicles
 Clearway Energy Group
 Loy Cluney⁶⁰
 Frederick K. Cobb-Adams⁹⁴
 Laurene Cockett
 Elizabeth Jane Culp⁷⁸
 Celine L. Cumberlander⁹²
 Ian-James K. Custino⁹⁵
 Scott M. Dahlem
 Robert Hano Davidson⁶⁹
 Hiram and Trudi de Fries
 Kelsey M. Dees
 Michael B. DeKneef
 Deloitte Services LP
 Robert Deuel
 Frank and Linda Dodd
 Angelina Duarte
 Thomas Kā'e'o Duarte⁵
 Kelly Beth Dukelow⁵
 Deborah and Fred⁸⁸ Erskine
 Dawn A. Luahiwa Farm-Ramsey⁷¹
 Helene K.M. Fergerstrom⁷⁴
 Festival Management Corporation
 Marcy E. Fleming⁵
 William Kalani Fong⁹¹
 Dr. Stan Fortuna, Jr. and Nancy
 Fortuna
 Alika⁹⁴ and Haunani^{97, S} Fujimoto
 Chansen Fukushima⁵
 Raejean K. Gamiao⁹⁵
 Dannette^{61, S} and Billy Gardner
 Evan Golly⁵
 Ronald and Hali'imaile⁵⁶ Goo
 Goodfellow Bros, LLC
 Trustee J. Noelani Goodyear-
 Ka'ōpua, PhD^{92, S}
 David Greer⁵
 Christine Guo⁵
 Arthur C. Harris⁷⁹
 Hawai'i Community Foundation
 Hawaii Public Policy Advocates, LLC
 Hawaiian Financial Federal Credit
 Union
 Health Velocity Capital
 Mathew and Valerie Hegarty
 Amona K. Ho
 Anthony⁶⁷ and Irene Ho
 Elizabeth Hokada
 Brandon Hong⁹²

Christina^{91, S} and Jeremy⁹¹ Hopkins
 Shanell Ingano⁵
 Ross and Nikki⁵ Iwata
 Jon T. Iwatani⁵
 Jason^{90, S} and Jeannin⁵ Jeremiah
 Kailimai 'Ohana
 Michelle Nalani^{90, S} and James S. K.
 Kaina Jr.⁹⁸
 Kākou Collective
 Kalino Foundation
 Ann-Gaylin K. Kamalani⁸⁹
 Kamehameha Schools - Kanaeokana
 Kamehameha Schools Association
 of Kauai
 Kamehameha Schools Class of 1964
 Kamehameha Schools Class of 1976
 Kamehameha Schools Class of 1990
 Kamehameha Schools Class of 1991
 Kamehameha Schools Maui Campus
 Parent Teacher Student 'Ohana
 Kamehameha Schools Maui Class
 of 2023
 Kamehameha Schools Preschool
 He'eia and Kikiwelawela
 Micah⁸⁷ and Joelle Kāne
 James⁶⁶ and Valerie I.⁶⁶ Kardash
 Michelle K. M. Ka'uhane⁸⁶
 Nālani Blane Kealaiki^{94, S} and William
 Kealaiki⁹⁴
 Kahanu Keawe
 Bruce and Lisanne^{82, S} Kekuwa
 Curtis⁶⁶ and Rebecca Kekuna
 Kekuna Services
 Marcia Kelly
 Dr. Lori Ann Kim⁹⁷
 Shelli P. Kim^{90, S}
 Karl and Lisa⁷² Kleissner
 Trent H. Koide^{88, S}
 Ronelle K. Kopp⁷⁵
 Kukio Golf and Beach Club, Inc.
 Alan⁶⁹ and Lynette Kumalae
 Shannon E. K. Ladd⁹⁰
 Bobbie P. Lau^{84, S}
 Layton Construction Company, LLC
 Alison L. Leary⁵
 Drs. Andy and Natalie L.⁹² Lee
 Douglas K. C. Lee⁸⁴
 Leianne K. Lee Loy⁸²
 Leimalama Lee Loy
 Hartwell H. Lee Loy, II⁷⁹
 Haunani S. Y. Lemn⁸⁰ and Scott
 Nunokawa
 Cheryl A. Levi⁸²
 Marcello Liguori
 Kainoa J. Lincoln⁹⁵
 Arthur⁵⁷ and Rhoda Loeb
 Kim Lorch and Diana Malotte
 Violet P. Lui-Frank⁶¹
 Stacy Pono⁷⁹ and Danene Lunn
 Tedmund K. Ma'a^{82, S}

Joseph Jr.⁶² and Patricia⁶² Machado
 Cindy Maeda
 Naomi Mahiko⁶³
 Drs. Emanuel Drechsel and Teresa⁷¹
 Makuakane-Drechsel
 Joseph N. Maluo⁵⁵
 Dr. Kendell L. Mann⁸²
 Marvin K. Manuel⁵
 Martin P. Martinson⁶⁸
 Marzano Research
 Jesse T. Matsuura
 Wendy⁷¹ and James Mays
 Louis⁶² and Anna Marie Medeiros
 Trustee Elliot K. Mills⁵
 Lee K. Muller⁶⁶
 Nelson Wong⁸⁷ and M. Kāhealani
 Nae'ole-Wong^{87, S}
 Euphemia Nagashima
 Lauren Nahme⁵
 Kevin Simon and Stacie Nakamura⁵
 Jason O. Navarro⁸⁹
 Ryan Ng⁵
 Okahara and Associates, Inc.
 Peter⁷⁹ and Kristen Ongoy
 Colette K. Oshiro⁷⁴
 Pacific Fleet Submarine Memorial
 Association
 Pacific Gloves and Supply
 Eli D. Pane'e, Jr.⁵⁹
 Larry and Gale Park
 Lawrence⁸⁷ and Heather^{92, S} Park
 Pax Bello Security Solutions Hawaii, LLC
 Pearl Harbor Hawaiian Civic Club
 Melanie Yin Pecsok⁷⁵
 Henrik Persson
 Jeffrey P. Peterson⁶⁰
 Diane J. Plotts
 Tai Prohaska⁸³
 R. M. Towill Corporation
 Ralph S. Inouye Co., LTD
 Heidi L. Randolph Maxie⁸⁸
 Col. Michael E. Rawlins Sr.⁶³
 Alvin W. Robinson⁶³
 Linda I. Rosehill⁶⁹
 Veronica Roth
 Winona E. Rubin
 Ben⁵ and Cindy Salazar

Dana K. Sato⁵
 Scott W. H. Seu⁸³
 Glenn Shigetomi⁵
 Carrie E. Shoda-Sutherland⁵
 James and Kimlynn Slagel
 Kamika Smith⁷⁹
 Snyder Family Foundation
 Sean K.⁸⁹ and Melissa A.K. Spencer
 Kevin and Leslee⁸⁸ Stevenson
 Karen L. F. Stine⁷⁵
 Swinerton Builders
 Henry and Dancine^{79, S} Takahashi
 Takamine Construction, Inc.
 Lee K. Takamori⁷⁴
 David N. Teo⁹⁹
 Janel M. Teo⁹⁴
 The London Company of Virginia,
 LLC
 The Wilhelm Group, LLC
 Walter^{84, S} and Tammy Thoenmes, III
 Melvin and Linda Tom
 Rick Akau⁷³ and Sabrina Toma⁵
 Bran-Dee M.K. Torres^{93, S}
 Daniel^{95, S} and Kristin Truong
 Frank A. Trusdell⁷⁶
 Tua Foundation, Inc.
 Creighton T. H. Tuzon⁸⁹
 Janet T. Umemoto
 University of Hawai'i - Mānoa
 Ushijima Architects, Inc.
 VKN Services, Inc.
 Sandee Nohea Walker^{96, S}
 Warrior Printing, LLC
 Jennie L. Watson⁷⁶
 WCIT Architecture, Inc.
 Glenda⁶¹ and Sam White
 Keevin Kawai Winchester⁹⁵
 Lisa K. Wisotzky
 Georgia H. Wong⁷⁰
 Lee Allen Wong⁷²
 Sterling Wong⁵ and Lu'ukia Archer
 Janet Wood
 Jack Woodruff
 Cody K. Yancey⁹⁶
 Vivian⁵ and Grant Yasunaga
 Benjamin Yin⁴⁹

MAHALO NUI TO ALL OF OUR GENEROUS DONORS



The Pauahi Foundation deeply appreciates the generous and continued support of our donors. Scan the QR code for the full donor list at [PAUAAHI.ORG](https://pauahi.org). Mahalo for uplifting haumāna and our lāhui!



Pauahi Foundation Scholarship Profile

JACOB GARCIA KSM'23



As **Jacob Garcia KSM'23** pursues a bachelor's degree in environmental science from the prestigious University of Pennsylvania, he appreciates the crucial support of generous donors who fund the **Lee Ann DeLima KSK'77** Scholarship and Pauahi Scholars award through the Pauahi Foundation.

"Mahalo donors of the Lee Ann DeLima Scholarship and Pauahi Scholars," Garcia says. "I am grateful for your financial support, and, more importantly, your faith in my educational journey. The cost of education is so high, and your support will help decrease the burden on my 'ohana. I am humbled to be the recipient of this scholarship that honors former Po'o Kula DeLima and hope to show how grateful I am by living my life as she lived hers: through kindness, generosity, hard work and caring for Native Hawaiians."

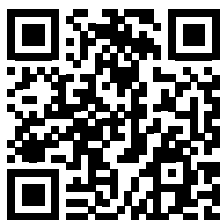
Garcia recalls growing up on Maui and spending time in nature, enjoying and appreciating his surroundings.

"I would swim in the freezing cold streams of 'Iao Valley, play in the colorful coral reefs of Lahaina, run around in the vast green forests of Kula, and sleep under the shade of the many 'ulu trees in Waikapū," he says. "But, as I matured, I noticed a lot of changes on Maui. The streams started drying up, the reefs began bleaching, the forests were being chopped down, and the number of 'ulu trees kept dwindling."

Through his educational pursuits, Garcia aims to return home and use his knowledge and skill set to help the lāhui, specifically focusing on the Maui community. He hopes to continue performing community service and focusing on the needs of Native Hawaiians by ensuring the environment thrives and helping to preserve Hawaiian culture for generations to come.

"I feel encouraged and motivated to continue my efforts to give back to my community by majoring in environmental science and helping Maui through sustainability and conservation efforts like how our ancestors did by living off the land and water," he says. "I plan to advocate to protect Maui's natural resources and get involved with policy changes and education. I look forward to attaining my goal of becoming an environmentalist, educator and community leader. Thank you so much for believing in me."

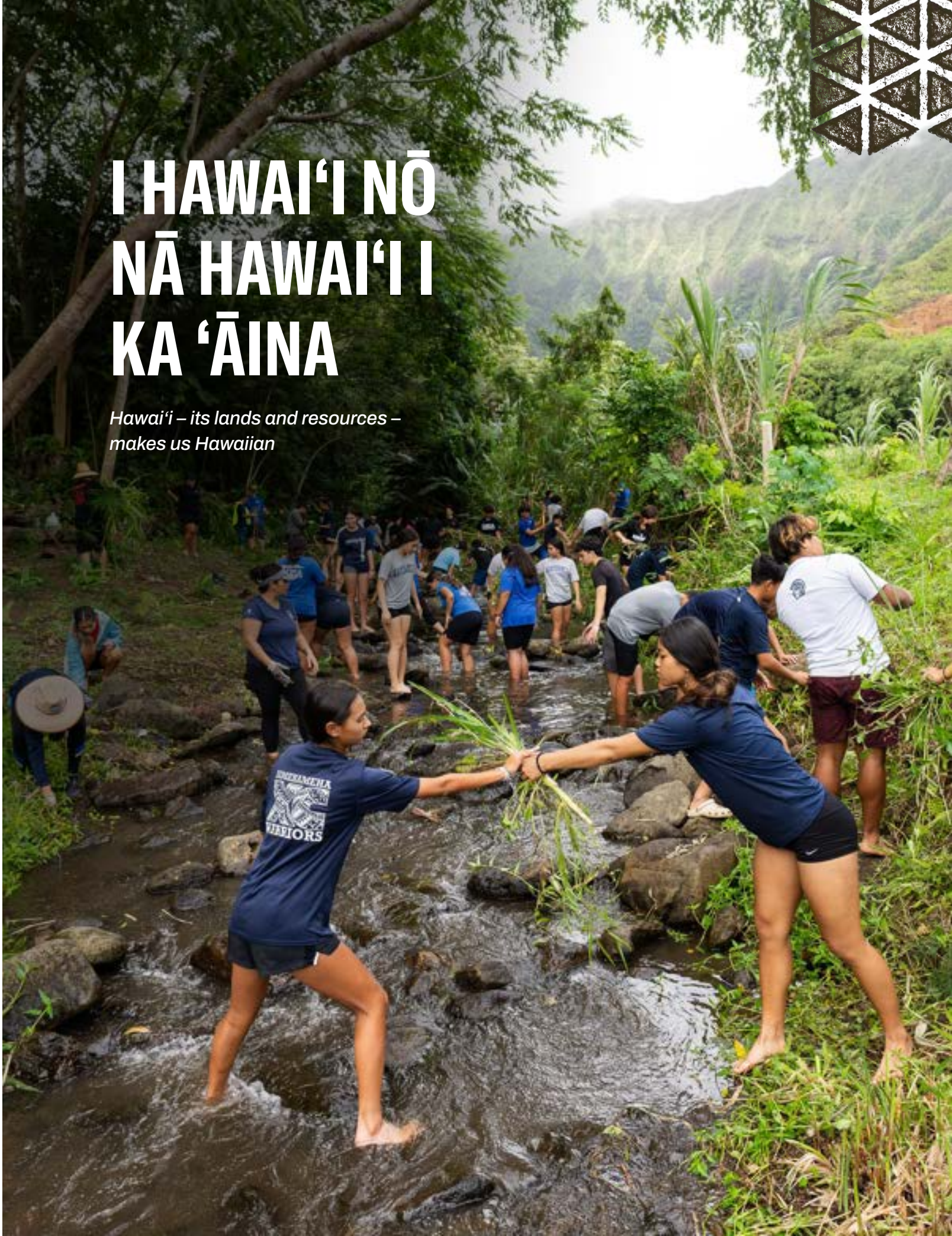
CONGRATULATIONS TO OUR 2023-2024 SCHOLARSHIP RECIPIENTS

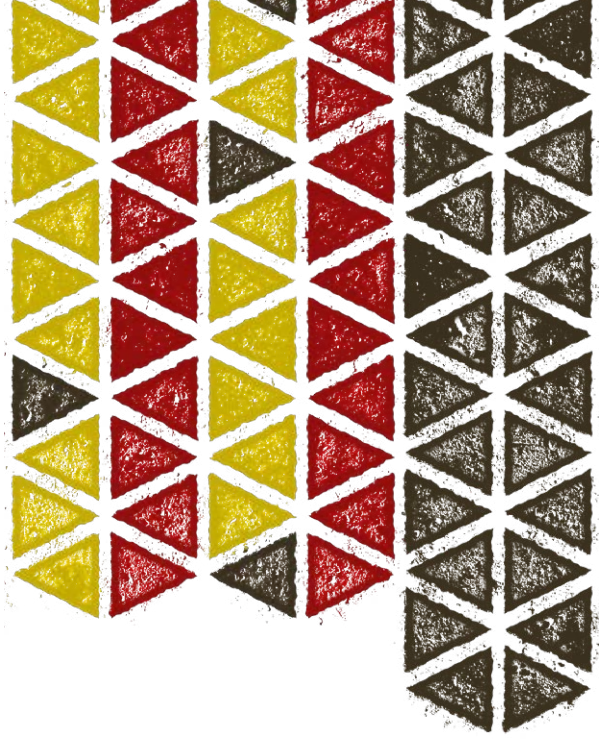


The Pauahi Foundation celebrates the achievements of our 2023-2024 scholarship recipients. Scan the QR code to view the recipients at [PAUAHI.ORG](https://pauahi.org). Mahalo for supporting haumāna and their educational journeys!

I HAWAI'I NŌ NĀ HAWAI'I I KA 'ĀINA

*Hawai'i – its lands and resources –
makes us Hawaiian*





Ke Kula ‘o Kamehameha