



# Make nō ke kalo a ola i ka palili

*The taro may die, but lives on in the young plants that it produces.*

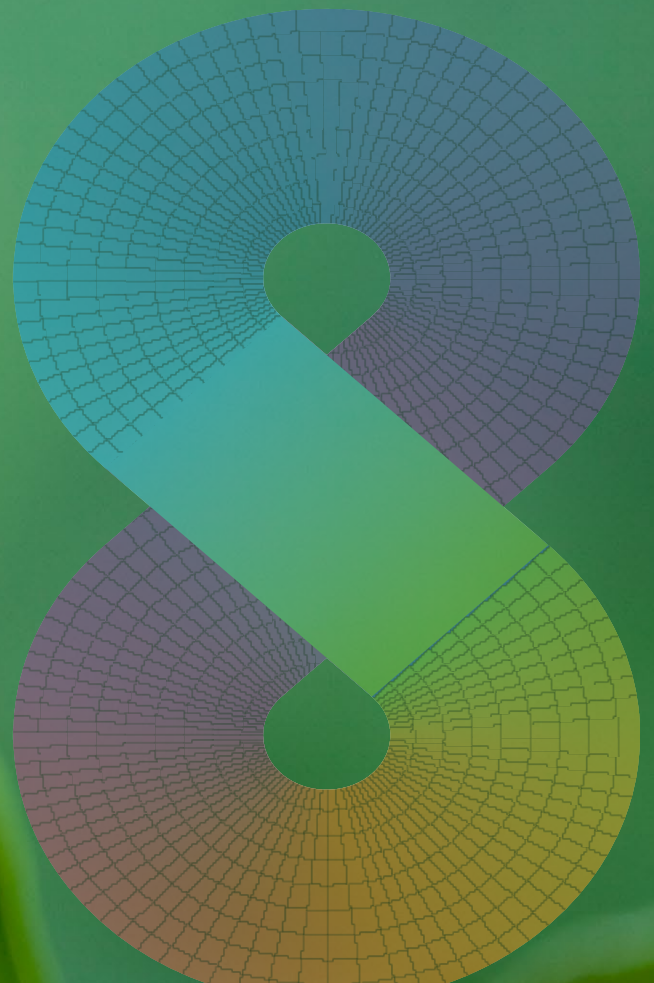
One lives on in his children. - MARY KAWENA PUKUI

# 2018

Hō'ike Kū Makahiki o Ke Kula 'O Kamehameha 2018  
2018 Kamehameha Schools Annual Report

JULY 1, 2017 - JUNE 30, 2018

# 1







# Hānai i ke keiki, ola ka lāhui

*Nurture the child and the lāhui thrives*

Aloha mai kākou,

**NUI KO MĀKOU MAHALO** i ke kū ‘ana he kīpo‘ohiwi i ke kīpo‘ohiwi me ‘oukou i kēlā makahiki aku nei, me ka hana pū ‘ana o kākou no ka ho‘oholomua ‘ana i nā papahana ko‘iko‘i a me ka ho‘oponopono ‘ana i ka ‘ōnaehana ho‘ona‘auao i mea e paipai ‘ia ai a e ho‘oulu ‘ia ai kā kākou mea nui, ‘o nā keiki.

‘O ka hana pū ‘ana me ke kaiaulu, ke kūkulu ‘ana i nā ala hou o ka ho‘ona‘auao, a me nā pilina pakanā kūloko a kau‘āina nō ho‘i, he mau mea nui nō ia no nā haumāna ma ko lākou ‘imi na‘auao ‘ana, ma ka ho‘oi-kaika ‘ana i ka ‘ike mo‘omeheu Hawai‘i, a no ke koho ‘ana i ‘oihana a kūlana hana kūpono e ola ai.

Ma nā ‘ano a pau, he paipai kā kākou mau hana i nā keiki e kūlia i ka nu‘u, a e ho‘omohala i nā mākau me ka ‘ike e lilo ai lākou he mau alaka‘i no ka lāhui a he po‘e ho‘oulu i ko lākou kaiaulu a me ka honua nō a puni.

Ua nui ko mākou ohohia i ka makahiki 2019, e noke mau mākou i ka hana me ka ‘imi i nā hopena lanakila no nā haumāna me ka ‘ōnaehana.

**WE ARE HONORED** to have stood alongside all of you as we worked steadily this past year toward advancing the most critical programs and system changes that will uplift and inspire our keiki.

Strong community collaborations, educational innovations, and key local and global partnerships have been vital to propelling our learners toward knowledge, a greater connection to their culture, and the career paths of purpose and industry.

In every way, our work and our efforts encircle our keiki and launch them on a journey to explore their potential, to develop the skills, tools and insights that will help them lead the lāhui and inspire their communities and the world.

We look forward to fiscal year 2019 as we stay the course while further sharpening our focus on learners and systems.



**ABOVE LEFT:**

(From left) Kamehameha Schools trustees Corbett A.K. Kalama, Elliot Kawaiho‘olana Mills, Micah Alike Kāne KSK ‘87, Lance Keawe Wilhelm KSK ‘83, and Robert K.W.H. Nobriga KSK ‘91.

**ABOVE RIGHT:**

Livingston “Jack” Wong  
Chief Executive Officer

# ‘Ōlelo Nu‘ukia

## *Vision Statement*

**I LOKO O HO‘OKAHI HANAUNA** — HE 25 MAKAHIKI, e ola māhuhua ka lāhui, ‘o ia kekahi mana‘olana o ko ua mau kula nei. E holomua nā haumāna ma ke kulanui a ma nā ‘ano papahana like ‘ole e ho‘omākaukau ana iā lākou no kekahi ‘oihana. No ka mea, mai laila mai e waiho kāhelahela ana nā koho maika‘i e wae aku ai no ka ‘oihana a me ka nohona. ‘O ka no‘ono‘o a lawena Hawai‘i a me ke Kalikiano ke kumupa‘a e kū ai nā haumāna. E lilo nō ho‘i nā haumāna he mau alaka‘i ‘ike loa e ho‘oikaika ana i ko lākou kaiāulu kūloko a me ke kaiāulu nui o ka honua a puni.

**WITHIN A GENERATION** of 25 years, we see a thriving lāhui where our learners achieve post-secondary educational success, enabling good life and career choices. We also envision that our learners will be grounded in Christian and Hawaiian values and will be leaders who contribute to their communities, both locally and globally.







# ‘O KE KEIKI KE KUMU

*The child is the reason (for all we do)*

  
HILO HA  
MOMONA  
EST. 1972





**E 'IKE AUANE'I 'OE**, ma loko o nā 'ao'ao o kēia wahi hō'ike, aia he 'ewalu mau mo'olelo e hō'ike ana i kekahi mau 'ano hana ma Ke Kula 'O Kamehameha, e like me ka ho'ona'auao, ka ho'omohala ho'okele waiwai, a me ke kākō'o kālā nō ho'i i nā kaiaulu a me ka ho'ohakuhia ma nā 'oihana. He mau la'ana nō ia o ka holomua o Ke Kula 'O Kamehameha i ka makahiki 2018 ma ka ho'okō 'ana i kona nu'ukia ma o ke ki'ina hana "Makawalu," 'o ia ho'i, ka no'ono'o 'ana i ka 'ike me nā kuana'ike like 'ole.

Ke 'ike 'ia nei ka holomua ma muli o ka lōkahi o ka mana'o o nā limahana a me nā pakanā a pau, 'o ka pono o nā keiki. 'O ke keiki ke kumu. He mana'o nōhie akā, he mana nō kona, a he kāhea nō ho'i ia iā kākou a pau e alu like, e wiwo 'ole, a e ho'ohana i ka 'ike ku'una no ka ho'oikaika 'ana i ka lāhui no nā hanauna hou e hiki mai ana.

**ON THE FOLLOWING** pages are eight stories that showcase the different facets of our work at Kamehameha Schools, from education and economic development to investment in community and business innovation. They are just eight examples of the many ways in which KS furthered its mission and vision in 2018 through *MAKAWALU* - the practice of seeking insight and impact through multiple perspectives.

This practice is strengthened by the fact that every one of our employees and partners shares a common cause: the betterment of our keiki. Keiki at the Center. It's a simple but powerful idea. And as the following stories show, it challenges us to work together, to be bolder, to reach into our past and build a stronger lāhui for a new generation of Hawaiian learners and for those to come.

“There are a lot of opportunities to align the work, to think bigger, to think at multiple levels of change.” - Kēhaulani Pu‘u

# Ka Piko Ho‘okahi o Kākou

## *Our Shared Center*



‘O KE KĀLELE ‘ANA MA LUNA O KA PONO O KE KEIKI, ‘o ia ke kahua like o kākou. Pēlā i ho‘ākāka mai ai ‘o Kēhaulani Pu‘u, ka Luna Ho‘okele o Kealākūlia, ke ke‘ena e ho‘olako nei i ka ho‘ona‘auao Hawai‘i, ke a‘oa‘o ‘imi na‘auao, a me ke a‘oa‘o ‘imi ‘oihana no nā haumāna mai ke kula waena a i ke kulanui. Ma loko o nā kaiaulu a me nā kula o ka pae ‘āina kahi e hana ai kāna po‘e kumu a kumu a‘oa‘o. ‘O ka hapanui o ia mau haumāna, he 7,500 ka nui, he mau haumāna no nā kula aupuni a me nā kula ho‘āmana Hawai‘i.

Nui ka po‘e i pā i ka ho‘ona‘auao kaiaulu a ‘o ke ki‘ina hana e paipai nui ‘ia nei i kēia mau lā, ‘o ia ho‘i kēia: ma ka laulima e loa‘a ai nā hopena ‘oi o ka maika‘i. “Ke ho‘ā‘o nei e ho‘ololi a e ho‘okā‘oi aku i nā hopena ma nā pae like ‘ole o ka ho‘ona‘auao. He hana nui nō ia,” wahi a Pu‘u. ‘O kekahi pōmai-ka‘i, ‘o ia ka loa‘a mai o ka ‘ōpa‘a hopena a‘o i kapa ‘ia ‘o HĀ, Nā Hopena A‘o, i ho‘okumu ‘ia e ka ‘Oihana Ho‘ona‘auao ma 2015. Ma nā makahiki ‘elua i hala aku nei, ua ho‘ohui ‘ia Nā Hopena A‘o i loko o ka papa ha‘awina o Kealākūlia, i mea e ‘oi a‘e ai ke kūlike o ka hana me ko ka DOE.

Ua kūkulu ‘ia Nā Hopena A‘o no ka hana ‘ana i nā wahi ho‘ona‘auao e ho‘oikaika ana i ka pilina, ke kuleana, ka maia, ke aloha lāhui, ke ola pono, a me ke aloha ‘āina o ka haumāna. He kū nō Nā Hopena A‘o i ka mo‘omeheu Hawai‘i.

“PUTTING KEIKI AT THE CENTER, that helps us find common ground,” explains Kēhaulani Pu‘u, department director for Kealākūlia, which provides culture-based education and academic and career counseling programs to middle school, high school, and postsecondary students. Her counselors and kumu work directly within communities and schools across the pae ‘āina. Most of their 7,500-plus haumāna attend, or have graduated from, one of the state’s public or Hawaiian-focused charter schools.



Kēhaulani Pu‘u



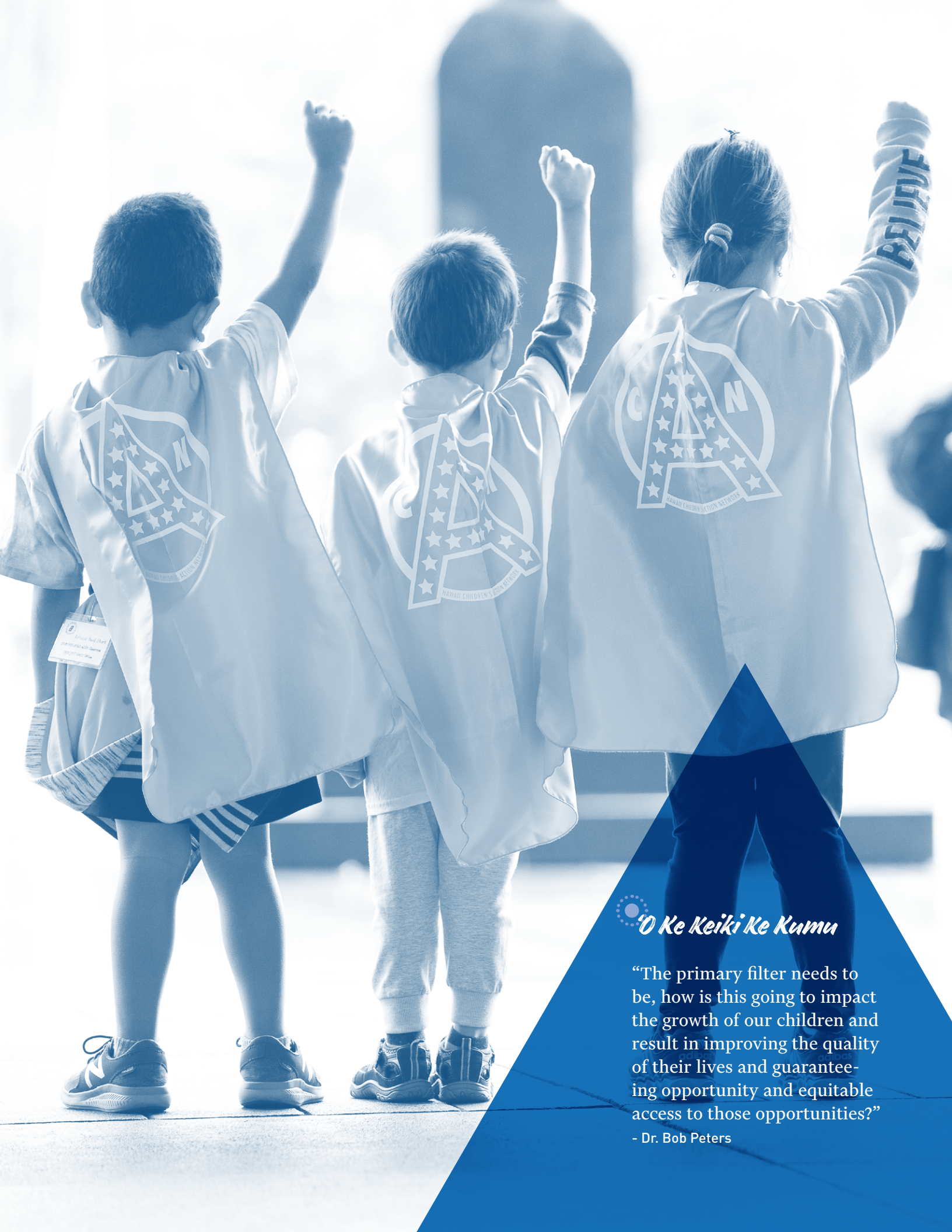
Community education is made up of many different stakeholders, and recently, there’s been a push for greater synergy. “You’re trying to make impact and create change at multiple levels,” says Pu‘u, “it’s complex work.” One of the bright spots is a framework of learning outcomes called Nā Hopena A‘o, introduced by the Hawai‘i State Department of Education in 2015. Over the last two years, Kealākūlia has carefully integrated its outcomes into curriculum, creating closer alignment with the work of their DOE partners.

Designed to foster an education environment that strengthens a child’s sense of belonging, responsibility, excellence, aloha, total well-being, and Hawai‘i, Nā Hopena A‘o is rooted in Hawaiian culture.



 *'O Ke Keiki Ke Kumu*

“Supporting keiki is the common ground where we find synergies and connections. That’s the motivation, that’s our reason, that’s our why.” - Kēhaulani Pu’u



 *'O Ke Keiki Ke Kumu*

“The primary filter needs to be, how is this going to impact the growth of our children and result in improving the quality of their lives and guaranteeing opportunity and equitable access to those opportunities?”

- Dr. Bob Peters

“It’s not a paying-it-forward kind of thing. It’s a responsibility to help improve the quality of life for everyone, and that to me is what education is all about.” - Dr. Bob Peters

# Ikaika ke A‘o mai Kinohi mai

## *Start Them Strong*



Dr. Bob Peters



MA NĀ MAKAHIKI MUA HE ‘ELIMA o ke keiki, ho‘okino mai he kanaiwa pākēneka o kona lolo. Ma ia wā ko‘iko‘i e pa‘a mai ai ke kahua o ke a‘o ‘ana, a ua pili ho‘i ka ikaika o ia kahua i ke olakino o ke keiki, kona mālama ‘ia ‘ana, a me kona ho‘ona‘auao ‘ia ‘ana.

‘O ka hō‘oia i ka pa‘a o ia kahua, he kuleana ia e ‘auamo like ‘ia nei e Ke Kula ‘O Kamehameha a me nā hui he nui, keu ho‘i ka Early Learning Board (ELB), nāna e ho‘omalulu i ka Executive Office on Early Learning. “No‘u, he pakanā ko‘iko‘i ‘o KS ma ka no‘ono‘o a ho‘olālā ‘ana i ka ‘ōnaehana ho‘ona‘auao no nā kamali‘i,” pēlā mai ‘o Dr. Robert Peters, ka Luna Ho‘omalulu o ka ELB. “Ua maopopo i ko KS nā kaiaulu e waiho hemahema nei, a ke hāpai pū mai nei lākou i nā nīnau nui i mua o ka ELB, he mau mea i mahalo ‘ia e mākou.”

No kona kūlana he lālā o ka ELB, ua kāko‘o ‘o KS i ka haku ‘ana i ka‘akālai no ka ‘ōnaehana ho‘ona‘auao kamali‘i. Ua hua maila ma 2018 ka papahana kū ho‘okahi ‘o ka Early Childhood State Plan. He papahana ia e ‘imi ana i ka pili maika‘i o nā ‘ohana, nā mālama keiki, nā kumu, nā kauka me nā limahana mālama olakino, a me ko nā kaiaulu, ma ka lawelawe ‘ana i nā pono o nā keiki. “‘O ka pa‘a ‘ana o ia papahana, me ke kōkua ‘ana mai o KS, he pahuhopu nui ia no mākou; i kēia manawa, ua pa‘a ke ala a mākou e holo ai i mua,” wahi a Peters.

**NINETY PERCENT** of a child’s brain development occurs in the first five years of life. It’s in this critical period when children build their foundation for learning, the strength of which is shaped by factors ranging from the child’s health to the availability of care and schooling.

Ensuring that this foundation is pa‘a is a kūleana that Kamehameha Schools shares with other advocates like the Early Learning Board (ELB), the governing body that oversees the state’s Executive Office on Early Learning. “I see KS as a critical thought partner helping to shape the early learning system,” says board chair Dr. Robert Peters. “KS brings expertise about underserved populations and other important issues before the ELB in ways that not too many others can.”

As a member of ELB, KS supported the development of a comprehensive strategy for Hawai‘i’s early childhood education system. This culminated in the 2018 release of the Early Childhood State Plan, a first-of-its-kind framework that seeks greater alignment of families, caregivers, kumu, healthcare professionals, and community members around children’s unique needs from birth to the age of 8. “The completion of that plan, facilitated by support from KS, was a huge milestone for us; we now have a framework to move forward,” Peters says.

# Na Lākou nō e Alaka'i

## *Let Them Lead*



Kumu Andrew Lai

“‘A’OLE LOA E HŌ’OLE. E ‘ae aku nō, me ka nīnau pū, pehea?” Pēlā ka pane ma’amau a Andrew Lai i kāna po‘e haumāna. ‘O Lai ka Luna Ho‘okele o nā hana ho‘omohala alaka‘i no nā haumāna ma KS Kapālama, he kūlana hana hou loa ia. ‘O ka makahiki kula 2018–19 ka makahiki ho‘ā‘o o ka papahana, e komo ai nā lālā a pau o ke aupuni haumāna i loko o ka papa ho‘omohala alaka‘i. ‘O kekahi pahuhopu o ka papa, ‘o ia ka ho‘oulu i ka mākaukau alaka‘i o nā haumāna ma ka ho‘olālā a ho‘okō ‘ana i mau hanana ma ke kula, no laila, ua lilo kekahi mau hana a hanana haumāna he kuleana na kēia pū‘ulu alaka‘i haumāna e ho‘okō ai.

Na nā haumāna e alaka‘i i nā hana a pau, ‘o ka hāpai mana‘o no nā kulekele kula, ‘o ka ho‘olālā i nā hanana launa, a ‘o ka paipai nō ho‘i i ke komo ‘ana i nā hana e pono ai ka lehulehu. I la‘ana, ua mālama ‘ia he alu koho pālōka i Nowemapa o kēlā makahiki aku nei, a ‘o kona hopena, ua koho pālōka nō he ‘ewalu mau haumāna o ka papa 12 ma Honolulu Hale, ‘o ka maka mua nō ia o ko lākou koho pālōka ‘ana. “He leo nō ko lākou, a ke akāka nei ko lākou mana‘o, a he mea nani ka ‘ike ‘ana i ke o‘o ‘ana a‘e o lākou,” wahi a Lai. “‘O ka ha‘awina nui loa no lākou, ‘o ia ka ho‘omaopopo ‘ana pehea e alaka‘i ai i nā hoaaloha me ka mālama pū i ka pilina hoaaloha.”

**“IT’S NEVER NO.** It’s always yes, but how?” This is the response Andrew Lai often gives his students as the newly created Student Leadership Activities director at KS Kapālama. The 2018-19 school year was the high school program’s pilot year and features a yearlong leadership course that all members of student government take. One of the program’s central goals is to build students’ leadership skills through the process of planning and executing events, so some of the functions of Student Activities have been incorporated into Student Leadership.

Everything they do is student-led, from weighing in on campus policies, to organizing social functions, to promoting community and civic engagement. Take last November’s voter drive, which resulted in a group of eight seniors casting their ballots at Honolulu Hale for the first time. “They definitely have voices, and they’re learning how to find them, and that’s what I enjoy about watching them go through that process,” Lai says. “The biggest life lesson for them is just figuring how to navigate the world of leading their friends while still being their friends.”

“The essence of being an effective leader, that has not changed; how we get there, that’s what’s changed.” - Kumu Andrew Lai



 *'O Ke Keiki Ke Kumu*

“Any good teacher will put students first and foremost, and they will be a part of stuff we create versus us creating stuff for them.” - Kumu Andrew Lai

“On an island with scarce resources, it’s important that we get together to leverage the resources that we have.” - Marion Paul

Marion Paul



# Paipai iā Lākou

## *Lift Them Up*

**MA KA HANA PŪ ‘ANA** me nā kaiaulu, he pono ke alaka’i ‘ia ‘ana o ka po’e i nā koho maika’i. A no Marion Paul, ka Pelekikena o Kaua’i Planning & Action Alliance (KPAA), he mea nui ka ‘ōlewa, ‘o ia ho’i ka hiki ke loli. “He ka’ina hana ola ka loli,” wahi āna.

‘O Keiki to Career ka papahana nui loa a KPAA, a he hana nui ia i komo ai he 40 a ‘oi mau hui no ke kākō’o ‘ana i nā ‘ōpio o Kaua’i. ‘O ka pāhana hou loa a kēia hui, ua kapa ‘ia ‘o ke Kaua’i Resilience Project. Ua ho’okumu ‘ia ma 2018 ma muli o ka ‘ikepili e hō’ike mai ana ē he 9% o nā haumāna kula ki’eki’e ma Kaua’i, ua ho’ā’o e ho’omake iā lākou iho. He kōkua ka Resilience Project ma ka ho’olako i nā ‘ōpio me nā ‘ike e pono ai ka ho’omanawanui ‘ana i ka ‘īnea me ka pōpilikia. ‘O ia kekahi o nā polokalamu he nui o ke KPAA, e ho’omākaukau ana i nā keiki no nā loli o ke ola kanaka ‘ana.

‘O ke KPAA ka iwikuamo’o o nā hana, nāna e ho’olauka’i i nā limahana a me nā kumu waiwai o Keiki to Career (i komo nā limahana a kumu waiwai mai Kamehameha kekahi), mai kona ho’okumu ‘ia ‘ana ma 2011. “He ‘oia’i’o nō, pono ka hana pū ‘ana o nā po’e a pau,” wahi a Paul. “‘A’ole ma ka hana ka’awale o nā hui, ke aupuni, nā ‘oihana, e ‘ike ‘ia ai ka holomua; aia nō a ku’ikahi kēlā me kēia ma ka hana like, hana pū, pēlā mākou e ‘imi ai i ka holomua.”

**COMMUNITY ENGAGEMENT** is the process of moving a community toward change, and for Marion Paul, president of Kaua’i Planning & Action Alliance (KPAA), flexibility is key. “Change is a living process,” she adds.

Her group’s central initiative is called Keiki to Career, a broad effort that involves over 40 organizations working to support Kaua’i’s youth. The initiative’s newest project is the Kaua’i Resilience Project, launched in 2018. Developed in response to data showing that 9% of Kaua’i’s high schoolers have attempted suicide, the Resilience Project equips young people with the tools they need to navigate through hardship. It’s just one of KPAA’s many programs that prepare keiki for life’s transitions.

KPAA serves as the effort’s backbone, coordinating the many hands and resources that have supported Keiki to Career since its start in 2011, including those from Kamehameha Schools. “We really do believe that it takes everyone,” Paul says. “It’s not any one organization, or government, or business; it’s every one of them, and that’s how we hope to have an impact.”





 *‘O Ke Keiki Ke Kumu*

“Keiki are at the center. They are at the core of everything we do.” - Marion Paul

REPORT ON

# Financial Activities

JULY 1, 2017 — JUNE 30, 2018



## FORWARDING MISSION

Kamehameha Schools completed the third year of its Strategic Plan (2015-2020) (SP2020) the first in a series of strategic plans outlining how the organization will accomplish its Vision 2040.

Moving toward this future, SP2020 contains five goals: deliver world class, culture based education through a network of Native Hawaiian schools; contribute to communities' collective efforts to improve education systems for Native Hawaiian learners; cultivate a strong Native Hawaiian identity; execute as a high-performing, mission-driven organization; and optimize the strength, breadth, and strategic alignment of KS resources.

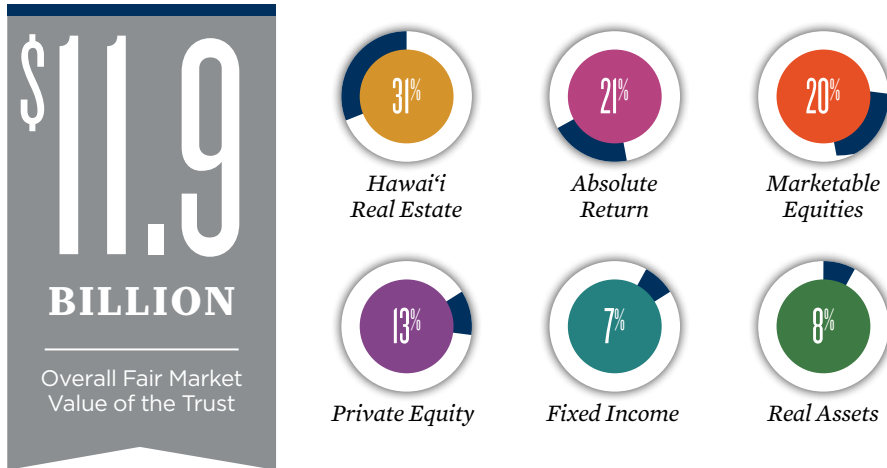
Vision 2040 states

*“Within a generation of 25 years, we see a thriving lāhui where our learners achieve postsecondary educational success, enabling good life and career choices. We also envision that our learners will be grounded in Christian and Hawaiian values and will be leaders who contribute to their communities, both locally and globally.”*

# Endowment

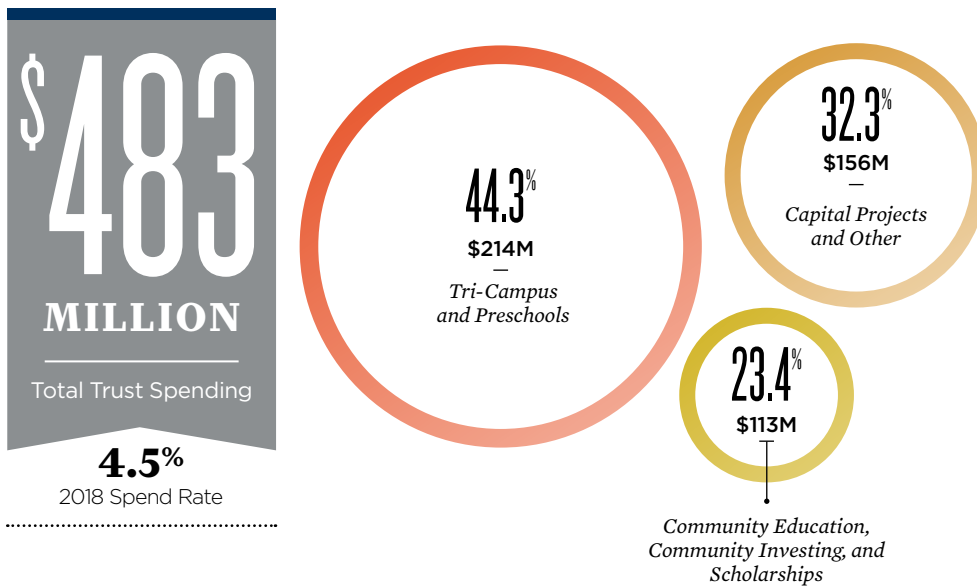
## KAMEHAMEHA SCHOOLS TRUST

» Kamehameha Schools' mission is primarily supported by its endowment. The endowment was valued at \$11.9 billion as of June 30, 2018. A globally diversified financial assets portfolio of \$8.2 billion, and Hawai'i commercial real estate representing \$3.7 billion at fair market value comprise the endowment's value.



## KAMEHAMEHA SCHOOLS TRUST SPENDING

» For the fiscal year, Kamehameha Schools spent \$483 million from its endowment on education, representing 4.5% of the five-year average value of the endowment. KS' spending policy targets a sustainable 4% of the five-year average value of the endowment to provide for stability and financial equilibrium over time. In close alignment with the policy, the average spending rate for the past five years was 3.9%. The 4.5% rate for the most recent year reflected the settlement of a lawsuit.



**Kamehameha Schools** is a private charitable educational trust endowed by the will of Hawaiian princess Bernice Pauahi Bishop (1831-1884), the great-granddaughter and last direct descendant of King Kamehameha I.

During her lifetime, Princess Pauahi witnessed the rapid decline of the Native Hawaiian population. She knew that education would be key to the survival of her people, and in an enduring act of aloha, she bequeathed to them a precious gift — 375,000 acres of ancestral lands of the royal Kamehameha family and instructions to her trustees that the “rest, residue and remainder of my estate” be used to establish the Kamehameha Schools.

Today, Ke Ali'i Pauahi's legacy continues to advance her desire to restore her people through education.

# Endowment

## INVESTMENT RETURNS

► The goal of Kamehameha Schools' endowment is to provide superior risk-adjusted long-term returns to support its mission in perpetuity. The 10-year return added value versus a policy-weighted average of market benchmarks and fell just short of its CPI + 5% objective of 6.4%, an objective designed to provide for real growth and financial equilibrium.

	10 Years Annualized	5 Years Annualized	1 Year
Endowment Fund	<b>6.3%</b>	<b>7.4%</b>	<b>8.0%</b>
Policy Benchmark	4.5%	6.7%	8.1%

## TOTAL INVESTMENT FUND RETURNS



### For More

Including a copy of Kamehameha Schools' audited "Consolidated Financial Statements and Supplemental Schedules" for fiscal year 2018, please visit [www.ksbe.edu/annualreports](http://www.ksbe.edu/annualreports)

# 3,870

**KS EMPLOYEES  
STATEWIDE**



**62%**  
**2,410**  
WĀHINE



**38%**  
**1,460**  
KĀNE

## KS EMPLOYEES BY ISLAND



O'ahu

**63%**  
**2,435**



Hawai'i

**20%**  
**783**



Maui

**14%**  
**540**



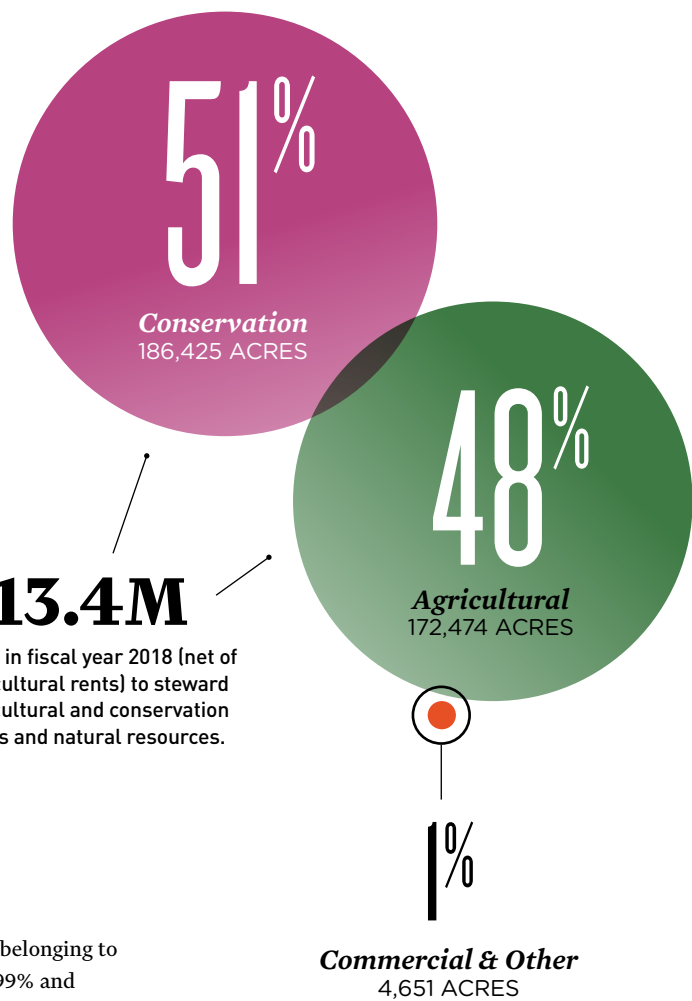
Kaua'i

**2%**  
**59**



Moloka'i

**1%**  
**53**



## Land Assets

► Commercially zoned lands make up 1% of total acreage (363,550) belonging to Kamehameha Schools. Agricultural and conservation lands comprise 99% and are primarily considered stewardship assets, not included in the endowment fund.

## Community Investing

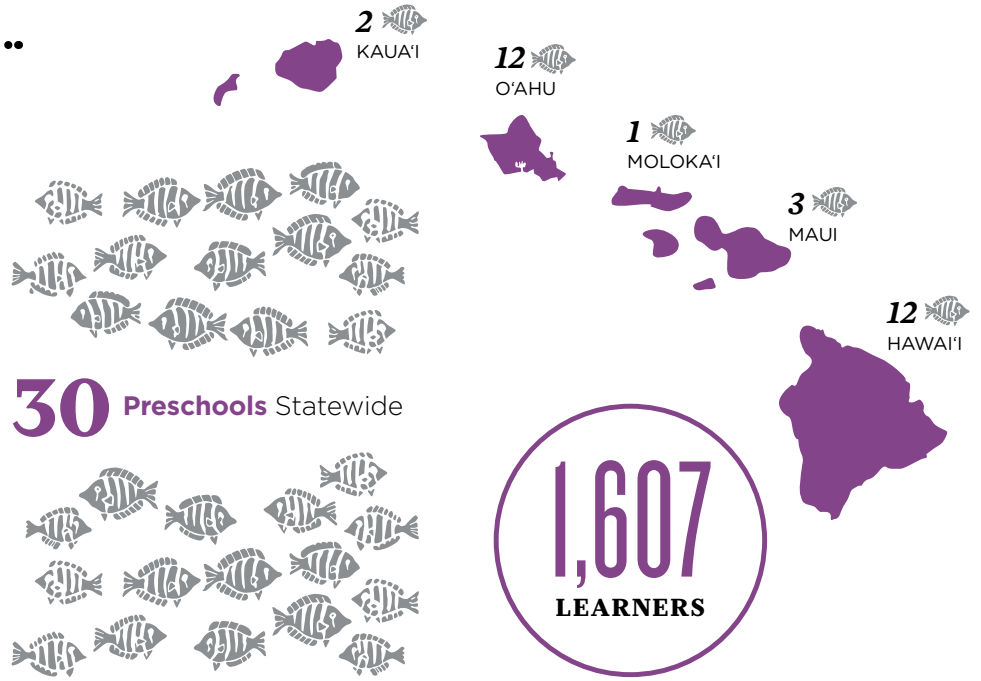


**92 organizations** funded through community investing efforts.



# Preschools

**\$35.3**  
MILLION  
Spent on Preschool Education



# Tri-Campus



**\$178.7**  
MILLION  
Spent on K-12 learners on three campuses

**5,404**  
LEARNERS

Campus	Enrolled	Graduated
<i>Hawai'i Campus</i>	1,158	139
<i>Maui Campus</i>	1,055	115
<i>Kapālama Campus</i>	3,191	442

# Scholarships



Providing learners access to a great equalizer in life – a quality education.

# Community Education



# Innovation



## PAUAHI KEIKI SCHOLARSHIPS

**\$13.9**

**MILLION**

Disbursed to **1,976**  
students attending  
other private  
preschools

## KIPONA SCHOLARSHIPS

**\$5.4**

**MILLION**

Disbursed to **773**  
students attending  
other K-12 private  
schools

## POST-HIGH SCHOLARSHIPS

**\$13.2**

**MILLION**

Disbursed to **2,017**  
students attending  
college



*‘O Ke Keiki Ke Kumu*

“It’s about ‘ohana at the center and integrating with our Pauahi Kamehameha piko.” - Ke’ala Kwan



“Why learn ‘ōlelo Hawai‘i? In short: Speak Hawaiian, think Hawaiian.”

- Kumu Ke‘ala Kwan



Ke‘ala Kwan

# Ka Ho‘okuluma ‘Ōlelo Hawai‘i

## *Normalizing Hawaiian*

“NA KĀKOU A PAU KĒIA HUAKA‘I HELE,”

wahi a Ke‘ala Kwan mai ka papahana ‘o ‘Ōlelo Kahua, i ho‘okumu ‘ia ma 2015. Ma lalo o ke alaka‘i ‘ana o Keoni Kelekolio me ke kōkua pa‘a mau o Kwan a me nā hoa kumu o ka hui ‘o Ho‘okahua Cultural Vibrancy, ho‘omākaukau ‘ia a a‘o ‘ia nō ho‘i nā papa ‘ōlelo Hawai‘i i kēlā me kēia mahina no nā limahana o Kamehameha.

I kēlā makahiki aku nei, ua hō‘ea i ka hapalua like o ka papahana, he papahana e kūkulu ana i ke kahua ‘ike ‘ōlelo Hawai‘i no ka hui holo‘oko‘a. Wehewehe mai ‘o Kwan, “O kekahi hō‘ailona o ka ho‘okuluma ‘ōlelo Hawai‘i, ua ‘oi aku ka pinepine o ka ‘ōlelo ‘ia, ka lohe ‘ia, ka ‘ike ‘ia, o ka ‘ōlelo.” A ke ‘ike nei nō ‘o ia i nā loli li‘ili‘i a me nā loli nui ma nā ke‘ena hana: ‘o ka wehe ‘ana i ka hālāwai me ka ‘ōlelo ho‘olauna a me ka pule; ke kau ‘ana o ka ha‘awina ‘ōlelo pōkole ma nā ‘eleweka o Kawaiha‘o Plaza; ke kōkua ‘ana i ka hoa ke‘ena ma ka ho‘olālā ‘ana i hanana paipai ‘ōlelo Hawai‘i.

I kēia manawa, ua ‘oi aku ka laha o ka ‘ōlelo Hawai‘i ma Ke Kula ‘O Kamehameha, a no Kwan, he hō‘ailona maika‘i ia o ke kūlana hou o ka ‘ōlelo—ke hele nei a laha loa, a lilo i mea kuluma. “He mea nui ka ho‘āmana ‘ana i ka po‘e e hele a e ho‘okō,” pēlā kāna i koikoi ai.

“WE ENTERED THIS JOURNEY as a kākou effort,” says Ke‘ala Kwan of the ‘Ōlelo Kahua Hawaiian Language Foundations initiative that he helped launch in 2015. Led by his colleague Keoni Kelekolio, Kwan and his fellow kumu from the Ho‘okahua Cultural Vibrancy group design and deliver the monthly ‘ōlelo Hawai‘i classes that every employee at Kamehameha Schools takes.

Last year marked the halfway point for a program that’s building an organization-wide foundation in ‘ōlelo Hawai‘i. “Normalization is simply more of it,” Kwan explains, and in big and small ways, he has seen ‘Ōlelo Kahua gradually transform the workplace around him: from hearing more of his colleagues open meetings with pule and ho‘olauna (introductions in ‘ōlelo Hawai‘i), to seeing short vocabulary lessons posted in the Kawaiha‘o Plaza elevator, to helping a neighboring department organize an ‘ōlelo-friendly social event.

‘Ōlelo Hawai‘i at Kamehameha Schools is more commonplace than ever, and for Kwan, it’s the sign of a new norm. “Part of it is that you’re empowered, now go do it,” he nudges.



*‘O Ke Keiki Ke Kumu*

“I think a lot about the work we are doing as providing Native Hawaiian students of today and tomorrow with the opportunity to live in Ha-wai‘i, to raise their families, to have a high quality of life.”

- Walter Thømmes

# Kūkulu no kēia Mua Aku

*Build For Tomorrow*



Walter Thoemmes



.....

**MA NĀ MAKAHIKI I HALA IHO NEI**, ua loli ka mana’o o Ke Kula ‘O Kamehameha e pili ana i ke kuleana ‘ona ‘āina. He pono e loa’a ke kālā mai nā ‘āina kālepa no ke kākō’o ‘ana i nā kula, a he pono e ho’opuka ‘ia nā waiwai like ‘ole no nā kaiaulu kekahi.

Ma muli o ia mana’o i kūkulu ‘ia ai he ki’ina hana no ke kūkulu kaiaulu e ho’omakakoho ana i ka nele o nā hale noho o kama’āina, nā alakau no ka lehulehu, ka ho’okele waiwai kūloko, ka pāheona, ka mo’omeheu, a me nā ‘āina kūlohelohe. “Mana’o wau, aia kākou ma ka huliau o ka noho ‘ana ma Hawai’i nei,” wahi a Walter Thoemmes, ka Luna Ho’okele Manakia o ka māhele Commercial Real Estate Development. “Ma ko kākou ‘ano he kaiaulu, ‘a’ole hiki ke hana ma

ke ‘ano ma’amau, ‘a’ole hiki ke ho’olālā ma ke ‘ano ma’amau, ‘a’ole hiki ke like ka hana o kēia wā me ka hana ma nā makahiki he 60 i hala akula.”

‘O nā ‘āpana ‘āina kālepa ma Kapālama Kai, he 105 mau ‘eka ka nui, ‘o ia kahi hou a Kamehameha e ho’olālā nei. Ma 2018, ua holomua ka papahana ma hope o ka ‘āpono ‘ana mai o ka Papa Kahu Waiwai. I loko o nā makahiki he 20 e hiki mai ana e lilo ai ia ‘āina he kikowaena no ka ‘oi’enehana, nā hale noho no nā kama’āina, a me nā ‘ano alakau like ‘ole e emi mai ai ke kauka’i ma luna o ke ka’a. ‘Ōlelo ‘o Thoemmes, “He loli nō, akā ‘a’ole ke kālā ‘o ke kumu e ho’ololi ai; he loli no ka pono o ke kaiaulu holo’oko’a.”

**IN RECENT YEARS**, Kamehameha Schools’ vision as landowner has evolved. Not only must our commercial properties generate income to support the educational mission, they must also create real and widely shared value in their communities.

This basic principle has led to a development approach that prioritizes matters of housing and transit, the local economy, and the presence of arts, culture, and public space. “I believe we are at a tipping point for the future of living in Hawai’i,” says Walter Thoemmes, managing director of Commercial Real Estate Development. “As a community, we cannot do things the same way, or plan for communities the same way, as has been done for the past 60 years.”

Next up for reinvestment is Kapālama Kai, where Kamehameha Schools owns 105 acres of commercial land. In 2018, the area’s renewal took a major step forward with the Board of Trustees’ approval of a 20-year master plan that calls for a strong industrial business base, increased kama’āina housing, and ways of getting around that reduce car dependency. “It’s transformative change not just for the bottom line,” says Thoemmes, “but really for the benefit of that entire community.”

“We want to understand what the communities of tomorrow need to be for Hawai’i.” - Walter Thoemmes

“ There’s no exit strategy for us, as a business or as a movement. The end goal is systems of abundance, living here in perpetuity.”

- Keoni Lee

# Kūkulu i kēia Mua Aku me nā Hoa

## *Co-Create the Future*

“**E HO’OMAKA ME KE KUANA’IKE** a me nā mea āu e mana’o ai he waiwai,” i wehewehe mai ‘o Keoni Lee, e pili ana i ka ho’ohakuhia. He lālā ho’okumu ‘o Lee no Waiwai Collective, ‘o ia ka hui nāna Ka Waiwai, he hale hālāwai ma Mō’ili’ili a he pāhana ho’oulu pā’oihana na ka hui Strategy and Innovation o Ke Kula ‘O Kamehameha. Ma mua, e waiho hakahaka ana ka papahela mua o ka Hale Varsity o KS, a ho’olilo ‘ia akula i wahi kauluwela i ka wehiwehi he ‘ōlelo Hawai’i.

Ua ho’okumu ‘ia ‘o Ka Waiwai i wahi e ho’ohui ai i ke kaiaulu no ka ‘imi ‘ana i nā hopena i kū i ke kuana’ike Hawai’i: ‘o ke kaulike, ka pāna’i like, ka hui ‘ana he alo a he alo, a me ke aloha ‘āina. “Pehea lā ho’i e ho’olilo ai i ia mana’o i hana maoli?” i nīnau ai ‘o Lee. ‘O ka ha’ina o ia nīnau kāna e ‘imi aku ana me kona mau pakanā ‘o Mahinapoepoe Duarte a me Jamie Makasobe ma ka wehe ‘ana iā Ka Waiwai ma ‘Okakopa 2017.

Ma 2018, he 15,000 a ‘oi mau kānaka i hele i laila no ka inu ‘awa me ka ho’olohe mo’olelo, ka ho’olohe mele a me ke ka’ana mana’o, a no ka hana pualu. “Ma ka ho’olako i wahi e hui ai ka lāhui, pēlā kākou e ‘ike ai i ko kākou makemake a me ka mea e pono ai i kēia mua aku,” wahi a Lee. “‘A’ole mākou mana’o ē ‘o mākou wale nō ke ‘ike i ke ala i mua; eia kā ho’i, ke kūkulu pū ‘ia nei ke ala i mua me ke kaiaulu.”



Keoni Lee

“**IT STARTS WITH YOUR WORLDVIEW** and values,” explains Keoni Lee, co-founder of Waiwai Collective, on the topic of innovation. Waiwai Collective is the hui behind Ka Waiwai, a contemporary Hawaiian space located in Mō’ili’ili and a seedbed project for Kamehameha Schools Strategy and Innovation Group. What sat as an empty ground floor space in the KS-owned Varsity Building has been transformed into an inviting mix of color, texture, and ‘ōlelo Hawai’i.

Ka Waiwai is designed to build community around a set of outcomes that align with a Hawaiian worldview: balance, reciprocity, face-to-face interactions, ‘āina-based. “How do we put that mindset into practice?” Lee asks. It’s what he and his partners Mahinapoepoe Duarte and Jamie Makasobe set out to explore when they opened Ka Waiwai in October of 2017.

In 2018, over 15,000 people visited the space to share ‘awa and mo’olelo, to listen to mele and mana’o, to co-work and collaborate. “Giving the lāhui a place to experience these things makes it easier to understand where we need and want to go for our future,” Lee says. “We are not prescribing exactly what that future is but rather co-creating it with community.”



*‘O Ke Keiki  
Ke Kamua*

“Relevant and enduring solutions are developed bottom-up through collaboration and co-creation. By putting the lāhui at the center of our work, we stay grounded in this strategy.” - Keoni Lee



“Hale Kua is based on the entrepreneurial spirit of our indigenous youth.”

- Manaola Yap

Manaola Yap



# Ho‘omākaukau iā Lākou no ka Ho‘omaka ‘ana

## *Prepare Them For Launch*

HE LŌ‘IHI KA NOHO ‘ONA ‘OIHANA ‘ANA o Manaola Yap. Ua ho‘omaka ‘o ia i kāna ‘oihana mua loa ma loko o kona lumi moe ma Kohala, a ho‘olilo akula ‘o ia i ia wahi i lumi hō‘ike‘ike no kāna mau mea i ‘ohi‘ohi ai mai ‘Āsia mai, i kū‘ai hele ‘ia e nā limahana hakulau o nā hōkele o laila.

Ma muli o ka makakū, ka welo ‘ohana, a me kona akamai pā‘oihana i holomua koke ai kāna ‘oihana ‘o MANAOLA. Mai ka ho‘oku-mu ‘ia ma 2016, ua nui nō ka po‘e ho‘ohihi i kāna mau mea i hana ai me ka ho‘ohui ‘ana i ka ‘ike ku‘una me kāna no‘eau hakulau. No ia holomua koke, ua wehe ‘ia nā palena o ka hiki me ka hiki ‘ole no nā ‘oihana i kū i ka ha‘aheo i kona ‘ano pono‘i he Hawai‘i.

Ma 2018, ua wehe ‘o Yap iā Hale Kua, he māhele hou o MANAOLA a he kū i ka ‘auhau ‘ole. “Ua nui ka po‘e i ho‘oulu ‘ia e ka mo‘olelo o MANAOLA,” wahi āna. “O ke kahua o Hale Kua, ‘o ia ke kōkua ‘ana i ka po‘e Hawai‘i ‘ona ‘oihana ma ka ho‘oholomua i kā lākou ‘oihana ma ke ‘ano kūpono.”

Me ke kōkua kālā mai Ke Kula ‘O Kamehameha mai, ua kō ka mua o nā papa he ‘elima o Hale Kua i ka pū‘ulu ‘ōpio, he po‘e pāheona, kuke, hakulau, a ho‘okani pila ko loko. Ua lawe ‘ia lākou i Hawai‘i e Yap e ‘ike ai i nā wahi a me nā hana i pili i kona ‘ohana. He aha ho‘i ka ha‘awina mua? ‘O ka ho‘oulu ‘ia.

**MANAOLA YAP HAS BEEN A CREATIVE** entrepreneur for a long time. He built his first business out of his Kohala bedroom, transforming it into a showroom of collectibles sourced from Asia and shopped by designers from the nearby resorts.

It’s this mix of imagination, heritage, and business smarts that has fueled the rapid rise of MANAOLA, Yap’s fashion and lifestyle brand. Since launching in 2016, MANAOLA’s distinct blend of ancestral ways and sophisticated design has attracted a devoted following. His success has redefined what’s possible for a brand whose identity is deeply and unapologetically Hawaiian.

In 2018, Yap unveiled a new non-profit arm to MANAOLA called Hale Kua. “We have a lot of people who have been inspired by the MANAOLA story,” he explains. “The basis of Hale Kua is to help entrepreneurs of kānaka-based businesses that want to move into commerce, but want to translate it in a way that they still feel pono and is pono.”

With funding assistance from Kamehameha Schools, last year, Hale Kua completed the first of five mentoring phases with a diverse cohort of young artists, chefs, designers and musicians. Yap brought them to Hawai‘i island and introduced them to the sites and practices that are significant to his ‘ohana. Their first lesson? Inspiration.



*‘O Ke Keiki Ke Kumu*

“It’s about being relevant to time, connecting with them to see, what are they connecting to right now?” - Manaola Yap



# Continuing Pauahi's Legacy of Giving

PAUAHI FOUNDATION



Aloha mai kākou,

**Ke Ali'i Bernice Pauahi Bishop** is considered by many as one of Hawai'i's greatest philanthropists. Her aloha for her people and true servant leadership created a legacy that has impacted thousands of Native Hawaiian learners in their pursuit of better and enriching lives through education.

Often times, we forget that she did not act alone. Her husband, Charles Reed Bishop, was instrumental in carrying out her wishes set forth in her will, and ultimately, laying the foundation for Kamehameha Schools.

Today, Pauahi's legacy is carried forward by a hui of supporters who have accepted the kuleana of uplifting the Hawaiian community. These include the many beneficiaries who were provided with educational opportunities along with a hui of supporters who believe in our mission — and now choose to pay it forward by giving with Pauahi.

On behalf of Kamehameha Schools, and its fundraising arm, the Pauahi Foundation, I want to mahalo the more than 1,000 donors who have come together to create a thriving lāhui by making a gift to the foundation. Collectively, this hui has generated over \$1.3 million for post-high scholarships for fiscal year 2018.

Of great significance are the many learners served from the selfless generosity of our donors. Last year, more than 200 students pursued a post-high education thanks to a scholarship from the foundation.

**AS WE CELEBRATE THESE RESULTS, LET'S BUILD ON THIS MOMENTUM AND INSPIRE OTHERS TO JOIN IN.**

With the Hawaiian population expected to reach more than 873,000 by 2040, the need to come together to uplift all Hawaiian learners is imperative. Together, we can make a difference and help our community thrive by giving with Pauahi. I mua!

Mahalo nui,

**TARA WILSON**

*Director of Advancement, Kamehameha Schools*

*Executive Director, Pauahi Foundation*

“Together, we can make a difference and help our community thrive by giving with Pauahi.”



# Our Impact *At a glance*

**\$1.3**  
**MILLION**

Amount raised in donations by generous individuals and organizations  
(See page 30)

**\$698,000+** Disbursed in scholarships and grants in support of Native Hawaiian learners

**100%** Percentage of Kamehameha Schools Trustees and Executive Leadership Team who made gifts to the Foundation

**21%** Percentage of Kamehameha staff who made gifts to the Foundation

**\$236,564** Received in donations from Kamehameha Schools Alumni

**+692** New donors (▲ 6%)

**+78** New donors making recurring gifts

## FINANCIAL SUMMARY

<b>GIFTS</b>	<b>FY 2018</b>	<b>FY 2017</b>
Unrestricted	\$156,400	\$137,400
Temporarily Restricted	410,100	576,700
Permanently Restricted	745,500	866,400
<b>Total Gifts</b>	<b>\$1,312,000</b>	<b>\$1,580,500</b>
<b>Special Events, Net</b>	<b>\$31,400</b>	<b>\$42,900</b>
<b>Investment Income, Net</b>	<b>\$816,400</b>	<b>\$2,260,800</b>
<b>ENDOWMENT</b>		
Unrestricted	\$5,150,000	\$4,965,200
Temporarily Restricted	9,871,900	9,383,500
Permanently Restricted	11,600,100	10,894,300
<b>Total Endowment</b>	<b>\$26,622,000</b>	<b>\$25,243,000</b>

# 2017-2018 Donors

Our giving hui celebrates the diversity of our donors and the impact of their gifts. The section that follows acknowledges donors with gifts \$250 and above. Highlighted within each group are donors who, over the years, have attained a significant level of cumulative giving (5+ and 10+ years of consecutive years).

## KA HUI KŪLANIHĀKO‘I

### \$10,000 OR MORE

Kūlanihāko‘i is the source of rain in the clouds. It is the mythical pond or a lake in the sky. It is said that when Kūlanihāko‘i overflows it creates rain for the Hawaiian people. The overflowing generosity from donors in this hui makes a lasting impact into perpetuity.

Duane <sup>'72, 5+</sup> & Bette Chun <sup>5+</sup>  
 Arthur <sup>'57</sup> & Rhoda Loebel  
 Georgia J. Meyer  
 Glenn & Lytle <sup>'74, 5+</sup> Takemoto  
 Robert & Jane <sup>'65, 5+</sup> Terry  
 Compass Group USA, Inc.  
 Kamehameha Schools Kealakūlia  
 Department  
 Kamehameha Schools Association of Kaua‘i  
 Kamehameha Schools Association of  
 Teachers & Parents  
 Kamehameha Schools Class of 2017  
 Kamehameha Schools Hawai‘i Parents &  
 Teachers ‘Ohana <sup>5+</sup>  
 Kamehameha Schools Kapālama Student  
 Activity Funds  
 Na Ali‘i Consulting & Sales LLC  
 Pacific Fleet Submarine Memorial  
 Association  
 Schwab Charitable Fund  
 TMT International Observatory LLC  
 Zierk Family Foundation <sup>5+</sup>

## KA HUI UA LOKU

### \$5,000 – \$9,999

Ua loku is the pouring rain. Like a life-giving rain, donors in this hui have become a force for positive change in our community. This giving level honors donors who have made a commitment to uplift the community.

Anonymous (2)  
 Akina Enterprises LLC  
 Julian K. Ako <sup>'61, 10+</sup>  
 Estate of Nancy Asato <sup>+</sup>  
 Milton & Billie Beamer  
 Cades Schutte LLP <sup>5+</sup>  
 Dawn Farm-Ramsey <sup>'71</sup>  
 Kamehameha Schools Alumni Week Lū‘au  
 Kamehameha Schools Class of 1978  
 Kamehameha Schools Maui Campus Parent  
 Teacher Student ‘Ohana  
 Tara K. Malloe <sup>'94</sup> & Class of 1994  
 Lauren Nahme <sup>5, 10+</sup>  
 Nanea Foundation Inc.  
 Native Hawaiian Chamber of Commerce  
 Patrick K. Pinho <sup>'95</sup>  
 Jeremy Vierra  
 Livingston Jack Wong, Jr. <sup>5, 5+</sup> &  
 Kimi Oyama <sup>5+</sup>  
 Cody K. Yancey <sup>'06, 5+</sup>

## KA HUI UA NĀULU

### \$2,500 – \$4,999

The ua nāulu rain is a sudden heavy shower that brings replenishing water to dry areas. It is also called upon to help saturate the earth so that plants can grow. Donors in this hui make a lasting impact by helping the foundation grow with their support.

Anonymous (1)  
 Carlsmith Ball LLP  
 Les & Zora Charles  
 Joseph L. Dwight <sup>'88</sup>  
 Edy Gawiran <sup>'95</sup> & Class of 1993  
 Kalino Foundation / Kalino LLC <sup>5+</sup>  
 Micah <sup>'87, 5, 5+</sup> & Joelle <sup>5+</sup> Kane  
 Dr. Lori Ann Kim <sup>'97</sup>  
 Kings Hawaiian Holding, Inc.  
 R. Kawika Makanani <sup>'66, 10+</sup>  
 Grace M. Miller  
 Robert & Carol Momsen  
 Pearl Harbor Hawaiian Civic Club <sup>5+</sup>  
 Ben <sup>5, 5+</sup> & Cindy Salazar  
 Dennis & Janet Shannon  
 Snyder Family Foundation  
 Frank <sup>5+</sup> & Sharen <sup>5+</sup> Sylva  
 Ward Management Dev Comp, LLC.  
 Nelson Wong <sup>'87, 5+</sup> & M. Kahealani Nae‘ole-  
 Wong <sup>'87, 5, 5+</sup>  
 Burton S. Yuen <sup>5</sup>

# KA HUI KUĀUA

\$1,000 – \$2,499

The kuāua rain is drenching rain. Just as a soaking shower, donors provide the much needed sustenance in order to have a thriving and vibrant Hawaiian community.

Anonymous (3)  
 Melanie <sup>'84, 5+</sup> & Kevin Allison <sup>5+</sup>  
 Alston Hunt Floyd & Ing Lawyers  
 Michael <sup>'66, 5+</sup> & Chu Cha Asam <sup>5+</sup>  
 Violet W. Awana <sup>5+</sup>  
 Keith Aweau <sup>'78</sup>  
 Gaye K. K. Beamer  
 Augusta-Helen L. Bento <sup>'50</sup>  
 Sheila <sup>'67</sup> & George Bertram  
 Dr. & Mrs. Lawrence <sup>'61</sup> Brede, Jr.  
 Courtney M. Brown  
 Mamo M. Brown <sup>'77</sup>  
 Jared K. Ching <sup>'90, 5+</sup>  
 Loy Cluney <sup>'60</sup>  
 Hiram <sup>'59</sup> & Trudi de Fries  
 Shelby K. Decosta-Galdeira <sup>'99</sup>  
 Allan <sup>'62</sup> & Anita Dupont  
 Sherylann M. L. Enomoto <sup>'90, 5+</sup>  
 Fred <sup>'88, 5+</sup> & Deborah Erskine <sup>'8, 5+</sup>  
 Puanani Mundon Gonsalves <sup>'54</sup>  
 Hawaii Community Foundation  
 Randall <sup>'68, 5+</sup> & Nancy Hee <sup>5+</sup>  
 Randolph <sup>'78</sup> & Deborah Ann <sup>'79</sup> Hennessey  
 Moana C. Heu <sup>'74, 5+</sup>  
 Elizabeth Hokada <sup>'8, 5+</sup>  
 Dr. Claire K. Hughes <sup>'54, 5+</sup>  
 Corbett <sup>8</sup> & Sandy Kalama  
 Kamehameha Schools Alumni Association  
 - O'ahu Region  
 Kamehameha Schools Class of 1960  
 Kamehameha Schools Class of 1968  
 Kamehameha Schools Class of 1996  
 Kamehameha Schools Education Group  
 Kamehameha Schools Kapālama Campus <sup>5+</sup>  
 Kamehameha Schools Maui Campus  
 Association of Students  
 Eric <sup>'76, 8, 5+</sup> & Janis <sup>'76, 8, 5+</sup> Kane  
 Bernard <sup>'73, 5+</sup> & Holly <sup>5+</sup> Kaopuiki  
 James <sup>'66</sup> & Valerie <sup>'66</sup> Kardash

John <sup>'71, 5+</sup> & Suzette <sup>'71, 5+</sup> Kaulukukui  
 John Keating  
 Sydney <sup>'69, 10+</sup> & Kawehi <sup>'76, 10+</sup> Keliipuleole  
 KTA Super Stores  
 Alison L. Leary <sup>8</sup>  
 Herbert Levy <sup>5+</sup>  
 Kim Lorch <sup>5+</sup> & Diana Malotte <sup>5+</sup>  
 Lance Luke <sup>'73</sup>  
 Felicia A. Lum  
 S. Pono <sup>'79, 5+</sup> & Danene Lunn <sup>5+</sup>  
 Keoni Mahelona <sup>'05</sup>  
 Manuhealth Inc.

Douglas & Denise <sup>'74</sup> Pang  
 Martin & Jean Pea <sup>5+</sup>  
 Diane J. Plotts <sup>FS</sup>  
 R. M. Towill Corporation  
 Reid K. E. D. Reid <sup>'98, 5+</sup>  
 Robert & Elizabeth Reniers  
 Therese H. Rosier <sup>'8, 5+</sup>  
 Eric <sup>'8, 5+</sup> & Royce <sup>5+</sup> Sonnenberg  
 Clarence D. L. Soong <sup>'54</sup>  
 Te Puu Ao  
 The Association of Hawaiian Evangelical  
 Churches of HCUCC



Matson Navigation Company, Inc. & Subsidiaries  
 McDonald's Restaurant of Hawai'i, Inc.  
 Ronald G. & Cindy L. McMackin  
 Elliot K. Mills <sup>8</sup> & Ruth Mills  
 Claire Nakatsuka <sup>'76</sup>  
 Marc C. Naval <sup>'96</sup>  
 Jason O. Navarro <sup>'89</sup>  
 Khai Q. Ngo <sup>'8, 5+</sup>  
 Guy <sup>'8, 5+</sup> & Kirsten Nishimura  
 Robert <sup>'91, 8</sup> & Joyce Nobriga

The Florence K. O. Loo Trust  
 The Queen's Medical Center  
 Walter <sup>'84, 8, 5+</sup> & Tammy <sup>'8, 5+</sup> Thoemmes, III  
 Travis <sup>'89, 5+</sup> & Joby <sup>'89, 5+</sup> Tom  
 Bran-Dee M. Torres <sup>'93, 8, 5+</sup>  
 Creighton T. Tuzon <sup>'89, 5+</sup>  
 Anthony & Dana <sup>'71</sup> Vericella  
 Lance <sup>'83, 8, 5+</sup> & Marcy <sup>5+</sup> Wilhelm  
 Tara Wilson <sup>8</sup> & Blake Watkins

5+	Donors for at Least Five Consecutive Years	+	Deceased	S	Kamehameha Schools Staff
10+	Donors for at Least Ten Consecutive Years	class year	Kamehameha Schools Alumni	FS	Kamehameha Schools Former Staff

## KA HUI KO'IAWE

\$500 - \$999

Ko'iawe is a light moving rain. It is said that this rain is the water which moves down the mountains and creates flowing waterfalls. Just like a rain that creates flowing water, donors in this hui make a visible and clear impact in the Hawaiian community.

Anonymous (5)

Glennie G. Adams <sup>'78, S, 5+</sup>

Melissa K. Adams <sup>'00</sup>

C. Kuni Agard <sup>'95, 5+</sup>

Alexander <sup>'71</sup> & Vanessa <sup>'71</sup> Akana

Rhonda A. N. Alexander-Monkres <sup>'83, S, 10+</sup>

Deborah Ancheta <sup>'71</sup>

Heather K. Beamer

William <sup>'66</sup> & Phyllis <sup>'66</sup> Beimes, III

Keolu <sup>'76, S</sup> & Luann Bento <sup>S</sup>

Brian L. Boshard <sup>'77, S</sup>

Alyssa K. B. Braffith <sup>'70, S, 5+</sup>

Sean <sup>'71</sup> & Mary Browne

Dr. Charles <sup>'51</sup> & Clara Burrows

Winfred <sup>'76, 5+</sup> & Cindy <sup>'76, S, 5+</sup> Cameron

Paula C. H. Chang <sup>'73</sup>

Dr. Taran <sup>S, '95</sup> & Nizhoni Chun

Kevin Cockett <sup>'84, S</sup>

Harold & Virginia Cogger

Gayton C. Costa <sup>'68</sup>

Ronald A. Cox <sup>S, 5+</sup>

Elizabeth Jane Culp <sup>'78</sup>

Janet Ecke-Beamer

First Hawaiian Bank Foundation <sup>5+</sup>

William Kalani Fong <sup>'91</sup>

Priscilla K. L. H. Hanna <sup>'63, 5+</sup>

Frank & Maryellen Herringer

Jason W. Hirata <sup>S</sup>

Darrel <sup>S, 10+</sup> & Denise <sup>10+</sup> Hoke

Chad K. Imano <sup>S</sup>

Ross <sup>5+</sup> & Nikki <sup>S, 5+</sup> Iwata

Jon T. Iwatani <sup>S, 10+</sup>

William <sup>10+</sup> & Pua Kaai, Jr. <sup>S, 10+</sup>

Rachelle L. Kaaihili <sup>S, 10+</sup>

Joseph <sup>'71</sup> & Susan <sup>'71</sup> Kahiapo, Jr.

Anthony <sup>'65, 10+</sup> & Diana <sup>10+</sup> Kam

Frances K. Kama-Silva <sup>'78</sup>

Kamehameha Schools Class of 1966

Kamehameha Schools Class of 1973

Kamehameha Schools Class of 1993

Kamehameha Schools Class of 2003

Kamehameha Schools Hawai'i Elementary  
Student Council

Kamehameha Schools Internal Audit  
Division

Kamehameha Schools Maui Campus <sup>5+</sup>

Kamehameha Schools Office of the Chief  
Executive Officer

Kamehameha Schools Office of Trustees

Kamehameha Schools Strategy &  
Innovation Division

Kamehameha Schools Student Activities -  
Hawai'i Campus

Michael <sup>'65</sup> & Patty Kincaid

Ian P. K. S. Kosora <sup>'91</sup>

KSK High School Treehuggers Student  
Activites Club

Frances Laikona <sup>S, 5+</sup>

Bobbie P. Lau <sup>'84</sup>

Herling R. Lee <sup>S</sup>

Edward <sup>'87, 5+</sup> & Joelle <sup>'87, S, 5+</sup> Lee, Jr.

Abraham K. Lota <sup>'71</sup>

LPL Financial

Georgette R. Luppino <sup>'78</sup>

Pono <sup>'82, S</sup> & Lisa Ma'a

Leah K. Mariani <sup>'95, S, 10+</sup>

Matrix Service, Inc.

Steven <sup>'91, 5+</sup> & Day <sup>'91, S, 5+</sup> Mau

Louis <sup>'62, 5+</sup> & Anna Marie <sup>5+</sup> Medeiros

Diane Miller

Jessie K. Moniz <sup>'00, 5+</sup>

Gabriel L. Naeole <sup>'85, S</sup>

Cara Nakamura <sup>S</sup>

Sheryl L. Nicholson <sup>S</sup>

Benjamin <sup>5+</sup> & Geralyn <sup>5+</sup> Nihipali, Jr.

Dale <sup>10+</sup> & Leimamo <sup>'78, S, 10+</sup> Nitta

Nathanael C. Oda <sup>'03, 5+</sup>

Bob <sup>'65, S, 10+</sup> & Tara <sup>10+</sup> Oda

Alberta Ongies-Vincent

Kendall K. Paulsen <sup>'77, S, 10+</sup>

Peterson Bros. Construction

Col. Michael E. Rawlins Sr. <sup>'63</sup>

Vincent R. Rodrigues <sup>'71</sup>

Terrence & Trudy Rose

Rotary Club Hilo Bay

Dana K. Sato <sup>S, 10+</sup>

Phyllis Y. Sone <sup>S, 10+</sup>

Dr. Holoua Stender <sup>S, 5+</sup>

Henry <sup>5+</sup> & Dancine <sup>'79, S, 5+</sup> Takahashi

Mark & Konia <sup>'68</sup> Thompson-Mitchell

Melvin & Linda Tom

W. Garnett & Associates

W.H. Shipman Limited

Keevin Kawai Winchester <sup>'05, S</sup>

Benjamin <sup>'49, 10+</sup> & Muriel <sup>'50, 10+</sup> Yin

Kathleen Yonaoshi <sup>S, 10+</sup>

Kelly W. Zane <sup>'87</sup>

## KA HUI NOE

\$250 - \$499

The noe mist is a gently settled mist. It has been said that the sweet fragrance of the maile is kept fresh and moist by the misty rain. Similarly, donors of the Foundation refresh and invigorate the community through their generosity.

Anonymous (10)

Jason T. Achiu <sup>'73</sup>

Kauhi <sup>'95, 10+</sup> & Liz <sup>'95, S, 10+</sup> Ahana

Jonah H. Akaka <sup>S, 5+</sup>

Puni Akana <sup>'64</sup>

Cassandra E. Akina-Ancog <sup>'92</sup>

Kevin <sup>'78</sup> & Lee Ann <sup>'78</sup> Akiona

Ali'i Kula Lavender Farm

Noah P. Amba <sup>'03</sup>

Valerie M. Amby-Kamakeeaina <sup>'94, S, 10+</sup>

Jondi K. Anderson <sup>'92</sup>

Kathleen & Robert Andrews

Norman & Barbara <sup>'62</sup> Angelo

Naalehu K. Anthony <sup>'93</sup>

Darcy K. <sup>'82</sup> & Jillinda A. Barrios

Kekoa <sup>'91</sup> & Kawena <sup>'95</sup> Beupre

Stephanie M. Bell <sup>'68</sup>

Pakalani J. Bello <sup>'97, S, 5+</sup>

Wesley Blackstad <sup>'00</sup>

Marsha <sup>'70, FS</sup> & Bob Bolson

Donald Bowman <sup>'52</sup> & Lynnette Apo <sup>'64</sup>

Marino <sup>5+</sup> & Puanani <sup>'99, 5+</sup> Briones

Ella L. & Carlton E. Brooks

5+ Donors for at Least Five Consecutive Years

10+ Donors for at Least Ten Consecutive Years

†

Deceased

class year Kamehameha Schools Alumni

S

Kamehameha Schools Staff

FS

Kamehameha Schools Former Staff

Kimberly L. M. Carvalho-Faucher '85  
 Brian Y. Chang <sup>10+</sup>  
 Nathaniel '69, <sup>10+</sup> & Annette <sup>10+</sup> Chang  
 Charlene N. Christenson '78, <sup>S</sup>  
 Stacy A. Clayton <sup>S, 10+</sup>  
 Kehaulani E. Delostrico '82, <sup>S, 5+</sup>  
 Leiomalama E. Desha '74  
 DHL Mahi Opco, LLC.  
 Joane M. Diggs '97  
 Leroy E. Dikito, Jr. <sup>5+</sup>  
 Thomas K. Duarte <sup>S, 10+</sup>  
 Blaine & Jean Fergerstrom <sup>S, 10+</sup>  
 Hualani J. Fernandes '57  
 Rinda J. Fernandes '66, <sup>5+</sup>  
 Lisette Pua Fernandez-Akamine '78, <sup>S, 10+</sup>  
 Diane N. Gibb-Lahodny '82  
 Dr. J. Noelani Goodyear-Kaopua '92  
 William W. Grace '68 & Marcia H. Mitchell '68  
 E. K. Hale '68, <sup>S, 10+</sup>  
 Kanani Young Harris '90, <sup>S</sup>  
 Jason '90 & Billie Hauanio  
 Hawai'i Hotel Industry Foundation  
 Racine Hee '89  
 Davis K. Ho '71  
 Elizabeth J. P. Hugo '49  
 Julie E. K. Hugo '69  
 Koreti V. Ili <sup>S, 5+</sup>  
 Dr. Samuel Kamuela Kaahanui '67, <sup>5+</sup>  
 Coleen I. Kaanehe '78, <sup>S, 5+</sup>  
 Teana Kaho'ohanohano '00, <sup>5+</sup>  
 Cathy Manu Kaiama '78  
 Alison F. Kajiwaru <sup>S</sup>  
 Henrietta L. Kaleikau '50  
 Michael Kam <sup>S, 10+</sup>  
 Kamehameha Schools Administration  
 Group  
 Kamehameha Schools Class of 1952  
 Kamehameha Schools Communications  
 Division  
 Kamehameha Schools Community  
 Engagement & Resources Division  
 Kamehameha Schools Kuamahi Division  
 Abralette K. Kaneakua '67  
 Duke & Tracy Kaneakua <sup>S</sup>  
 Noah Kauhane '90  
 Kaulupono Music  
 Nālani Blane Kealaiki '94, <sup>S</sup> & William  
 Kealaiki '94  
 Travis P. Keene '92

Kevin K. Kidder '95, <sup>5+</sup>  
 Samuel & Lucy Ann Kihewa  
 Ikaika '91 & Elizabeth Kincaid  
 Ronelle K. Kopp '75, <sup>S, 5+</sup>  
 Keala F. Kwan <sup>S</sup>  
 Leianne K. Lee Loy '82  
 Carmel Marie K. Li '99  
 Karen C. Loo <sup>S</sup>

Jonathan Kaleo Pahukula '89, <sup>S, 5+</sup>  
 Faylene G. Paishon Duarte '94, <sup>5+</sup>  
 Gabriel '63 & Evelyn Puaa, Jr.  
 Queen Emma Quilting Ladies  
 Sheleen E. Quisquirin '95, <sup>S, 5+</sup>  
 Robin Y. Racoma <sup>S, 10+</sup>  
 Sarah L. Razee <sup>S, 5+</sup>  
 Bernice K. Redmayne '82



Naomi Losch '63  
 Aileen G. Magno '58  
 Lonna M. Maile '71  
 Rodney A. Maile '71  
 Martin P. Martinson '68  
 Patricia Matsumoto <sup>S</sup>  
 Carmen L. Matsuura <sup>S, 5+</sup>  
 Mitchell '92 & Brooke '92 McClain  
 Michelle L. Medeiros '87, <sup>S</sup>  
 Darin K. Mijo <sup>S, 5+</sup>  
 Jamee M. Miller <sup>S</sup>  
 Delia K. Miller-Long '89, <sup>5+</sup>  
 Bill & Marcia Grace '68  
 Linda N. Mitsunaga '77  
 Naomi L. Miyashiro '82  
 Michael K. Moses <sup>S, 5+</sup>  
 Lorna H. Motas '71  
 Maile E. Mundon '89, <sup>S, 5+</sup>  
 Dianne A. Muraoka <sup>S, 10+</sup>  
 Aileen R. Nowaczek  
 Coty Buffy Ofisa '91, <sup>S, 5+</sup>  
 Andrea P. Oka '86, <sup>S</sup>  
 Daryle L. Oliveira '75  
 Carol-Ann M. Ota <sup>S, 5+</sup>

Marcia A. K. Saquing '72, <sup>S, 10+</sup>  
 Donald P. Sato '81, <sup>5+</sup>  
 Dennis '76 & Lauren Shak  
 Mavis M. H. Shiraishi-Nagao <sup>S, 5+</sup>  
 Carrie E. Shoda-Sutherland <sup>S, 5+</sup>  
 William Keoni Shultz '95  
 Edward '74 & Jackilyn '74 Simeona  
 Arthur L. Simpson '78  
 Southside Volleyball Club  
 Karen L. F. Stine '75  
 Gustavus Supe '52  
 Ruth N. Teanio <sup>S, 5+</sup>  
 Rick Akau & Sabrina Toma <sup>S</sup>  
 Neal C. Townsend <sup>5+</sup>  
 Miriam K. Ventura '67  
 Chuck '60 & Barbara Von Arnswaldt  
 Bruce K. Watson '92  
 Noelani Whittington '66  
 Leilani Williams-Solomon  
 Roy C. Wilson, Jr. '66  
 Kara N. Wong Ramsey '01  
 Noelani T. M. Yatsushiro <sup>S, 10+</sup>



## KA HUI 'OHU

\$100 – \$249

The 'ohu mist is a light misty cloud that covers mountains such as Haleakalā from top to bottom. This mist is also associated with great beauty. This giving level includes supporters whose gifts total from \$100 to \$249 during the fiscal year. Donors in this hui see the potential beauty that can come from the commitment of a gift.

Anonymous (24)

Leialoha M. Aana <sup>'78</sup>

Charlissia K. Abihai <sup>'92</sup>

Terra <sup>'89</sup> & Frank Acquaro

Roxanne M. Adams <sup>'78</sup>

Alohi M. Aea <sup>'97, S</sup>

Emilio & Marisol Agpaoa

Patrick T. Ah Loo <sup>'63</sup>

Melissa K. Ah Yat <sup>'96</sup>

Liz <sup>'95, 10+</sup> & Kauhi <sup>'95, 10+</sup> Ahana

Dr. Gary W. <sup>'77</sup> & Samantha Ahn

C. Kealohilani Souza Ahuna <sup>'93, S</sup> & D. Alike Souza <sup>'92</sup>

Gailyn A. Ahuna-Lum <sup>S</sup>

Racquel K. Aikala <sup>S, 5+</sup>

Kamaui H. Aiona <sup>'93</sup>

Benjamin K. Akana <sup>'73</sup>

Moana Akana <sup>'62, S, 5+</sup>

Aaron A. Akau <sup>'88</sup>

Michael A. Aken <sup>'93</sup>

Lynn P. Akeo <sup>'86</sup>

Renette M. L. Aki-Kamai <sup>'78</sup>

Kevin <sup>'78</sup> & Lee Ann <sup>'78</sup> Akiona

Susan K. Aki-Sanford <sup>'84, 5+</sup>

Clarence & Patricia <sup>'61</sup> Ako

Samuel K. Ako <sup>'68</sup>

Misty L. Albarado <sup>S</sup>

Rev. Clifford Kealahou Alike <sup>'67</sup>

Stephanie Allen <sup>'68</sup>

Paulyne K. Anakalea <sup>'63</sup>

James & Tina <sup>'76</sup> Andrade

Raymond <sup>'60</sup> & Elaine Antone, Sr.

Kennard K. Apaka <sup>†, '56</sup>

Raynard L. Apana

Douglas <sup>'68</sup> & Meta Katherine Apo

George K. Apo, Jr. <sup>'56</sup>

Michel S. Arakaki <sup>S</sup>

Tricia A. Arneson <sup>'03</sup>

Phillip M. Arnold <sup>'63</sup>

Shane M. Arquette <sup>S, 10+</sup>

Jessica H. Ashley <sup>'93</sup>

Pamela L. Asuega-Keawe <sup>S</sup>

Corey R. Au <sup>'78</sup>

Melissa K. Awa <sup>'09</sup>

Tyler K. Awakuni <sup>'03</sup>

Georgiana N. Awo <sup>'67</sup>

Noelani T. Balai <sup>'70</sup>

Benjamin <sup>S, 5+</sup> & Jaslyn Balberdi <sup>'96, S+</sup>

Maile Ballesteros <sup>'83</sup>

Rick Kaponowaiwaiola Barboza <sup>'93</sup>

Benjamin <sup>5+</sup> & Charlotte <sup>5+</sup> Bautista

Daniel Bayne <sup>'73</sup>

Melissa A. Beatty <sup>'94</sup>

Catherine N. Beaver <sup>'98</sup>

Jenai A. Beddow <sup>'05</sup>

Stephen <sup>'51</sup> & Orpha <sup>'55</sup> Beirne

Douglas S. Bell <sup>'61</sup>

Caroline K. Belsom <sup>'66, 5+</sup>

Puahi H. Benzon <sup>'96</sup>

Trevor Berry <sup>S, 5+</sup>

Dr. Carl Kalani Beyer <sup>'64</sup>

Patsy M. Bird <sup>'52</sup>

William <sup>'62</sup> & Rowena <sup>'62</sup> Blaisdell

Lahela M. Blake <sup>'96, 5+</sup>

Brenda Blake-Maika <sup>'67, 5+</sup> & Tau Maika <sup>5+</sup>

Ron Bode <sup>'76</sup>

Adrene K. Bogust <sup>'97</sup>

Kenten S. Boro <sup>'14</sup>

John <sup>'75, 5+</sup> & Karen Brandt <sup>5+</sup>

Scott & Kanani <sup>'87</sup> Briggs

Suzanne G. Brinkman <sup>S, 5+</sup>

David <sup>'68</sup> & Carol <sup>'68</sup> Brown

Kirk & Ione Lei <sup>'70</sup> Brown

Kevin H.K. Brown <sup>'88</sup>

Jeffery <sup>'76, 5+</sup> & Kaleilehua <sup>5+</sup> Bruchal

Paula Ann Burgess-Tauala <sup>S, 10+</sup>

Kegal-Joe M. Burrill <sup>'03</sup>

Ashley E. Byrd <sup>'98</sup>

Carly K. Byrd <sup>'98</sup>

Lance C. Cagasan <sup>S, 10+</sup>

Roger M. Caires <sup>S</sup>

Mr. & Mrs. Stephen Kaufman <sup>'85</sup>

Catherine M. Camp <sup>S, 10+</sup>

Richard Campbell <sup>'66, S</sup>

Bill Canario <sup>'63</sup>

Grant K. Carpio <sup>'03</sup>

Martha Carrasquillo <sup>S</sup>

Steven & Mary Carvalho

Laura Casey

Ethelwinn K. Cazimero <sup>'68</sup>

Lauwaeomakana D. Cazimero <sup>'67</sup>

Jennifer I. M. Chalaire <sup>'97</sup>

Kaulana D. Chang <sup>'88</sup>

Mara Chang <sup>'87, S</sup>

Jonathan <sup>S</sup> & Diana Char

Constance K. H. Cheung <sup>'67</sup>

Shaun Chillingworth <sup>'99, S</sup>

Donna Ching <sup>'73, 10+</sup> & Richard Leman <sup>10+</sup>

Jeris K. Ching <sup>'93</sup>

5+ Donors for at Least Five Consecutive Years

10+ Donors for at Least Ten Consecutive Years

† Deceased

(class year) Kamehameha Schools Alumni

S Kamehameha Schools Staff

FS Kamehameha Schools Former Staff

Jay Chow <sup>S, 5+</sup>  
 Dr. Francis K. Chun <sup>'79, 5+</sup>  
 Dr. Michael J. <sup>'61</sup> & Bina <sup>'63</sup> Chun  
 Mona Chun <sup>'73</sup>  
 Catherine L. Chun-Burseth <sup>'78</sup>  
 Sharlene Chun-Lum <sup>'68</sup> & Bruce Lum <sup>'65</sup>  
 Pua Colburn <sup>'54</sup>  
 William <sup>'63</sup> & Rowena <sup>'63</sup> Cole  
 Sharon A. Cole <sup>'63</sup>  
 Keith K. Condon <sup>'91</sup>  
 Clarissa Cosson <sup>'78</sup>  
 Alan <sup>'64</sup> & Shirley Costa  
 Henrietta Kaniho Crabbe <sup>'65</sup>  
 Mark N. Crabbe <sup>'80, 5+</sup>  
 Frances C. Crowell <sup>'46</sup>  
 Kenwell Alika Dafun <sup>'03</sup>  
 Tracy A. I. Damitio <sup>'87, 5+</sup>  
 Marguerite H. Daysog <sup>S</sup>  
 Scott K. De Sa <sup>S</sup>  
 Angel A. Decierdo <sup>S</sup>  
 Mary Cockett DeLapp <sup>S, 5+</sup>  
 Ellen K. Deleon <sup>'56</sup>  
 Arthur A. K. Dias <sup>'77</sup>  
 Frances L. Dinnan <sup>'73</sup>  
 Lance K. Dolera <sup>'83</sup>  
 Rochelle K. Domingo <sup>'90, S, 5+</sup>  
 Moya K. Donahue <sup>'80, S, 5+</sup>  
 Leah K. Dowsett <sup>'03</sup>  
 Wendy N. Doyle <sup>S, 10+</sup>  
 Nani Dudoit <sup>'78, S, 10+</sup>  
 Momilani C. Dufault <sup>'68</sup>  
 Carisa L. K. Duffy <sup>'92</sup>  
 Paul K. Dun <sup>'96</sup>  
 Kip <sup>5+</sup> & Leslie <sup>5+</sup> Dunbar  
 Joe & Melinda <sup>'76</sup> Edwards  
 Sharman R. Elison <sup>'68</sup>  
 Cheri Elms  
 Teru A. Enomoto-Heyl <sup>'79, 5+</sup>  
 Sharmaine H. Enos <sup>'81, S, 10+</sup>  
 Priscilla Erece Veilleux  
 Lana Gaye Ernesto <sup>'65</sup>  
 Hokulii K. Espaniola <sup>'03</sup>  
 Sherry L. Evans <sup>'68</sup>  
 Kehaulani M. Feldman <sup>'95</sup>  
 Aaron N. Fernandez <sup>'05</sup>  
 Laura-Lee M. Feurtado <sup>'75</sup>  
 Kenneth S. Fink <sup>S</sup>  
 Adele S. Flores <sup>S, 5+</sup>  
 Erica H. Fontaine <sup>'86, S, 5+</sup>  
 Tatiana K. Fox <sup>'00, S, 5+</sup>  
 Paul Friel <sup>'68</sup>  
 Gaynell M. Fuchs <sup>S</sup>  
 Kenneth K. Furukawa <sup>'75</sup>  
 Doug & Karen <sup>'78</sup> Gabbert  
 Danette <sup>'61, S, 10+</sup> & Billy <sup>10+</sup> Gardner

Gari-Ann Kia Photography  
 Mirrial Leinaala George <sup>'62</sup>  
 Sharon Gi <sup>S</sup>  
 Christopher Gomes  
 Farrah-Marie K. Gomes <sup>'94, 5+</sup>  
 Pam Gomes <sup>'73</sup>  
 Haliimaile D. A. Goo <sup>'56, 5+</sup>  
 Dr. Brian Goodyear  
 Julina N. Grace <sup>'09</sup>  
 William & Lee Claire <sup>'55</sup> Graham  
 Todd & Malia Gray <sup>S</sup>  
 Lilinoe T. Grube <sup>'83</sup>  
 Carolann G. Guy <sup>'73</sup>  
 Deeann M. K. Haberly <sup>'92, S</sup>  
 Joseph A. Hamel <sup>S, 5+</sup>  
 Ormond Hammond  
 Lori A. Hanaike <sup>'73</sup>

Stacey A. Imamura <sup>S, 5+</sup>  
 Kevin H. Imanaka <sup>S</sup>  
 Edward H. Ing <sup>'63</sup>  
 Sylvia K. Ing <sup>'63</sup>  
 Leihulumahiepihaikalohaana'ole I. Irvine <sup>'05</sup>  
 Charles K. Ishikawa <sup>'91</sup>  
 Jack & Lucy Anna Jenkins  
 Tanya-Ann H. Johansen <sup>'91, 5+</sup>  
 Darrell & Paula Johnson <sup>S</sup>  
 Marisa K. K. Julian <sup>S, 5+</sup>  
 Denise L. Ka'a'a <sup>'84, S, 5+</sup>  
 Allyson K. Kaai <sup>'83</sup>  
 Jay-R K. Kaawa <sup>S</sup>  
 Patti-Marie T. Kahoekapu <sup>'91</sup>  
 Dexter & Cathy <sup>'78</sup> Ka'iama  
 Summer H. Kaiawe <sup>'03</sup>  
 Edward K. Kalama, Jr. <sup>'76, S, 10+</sup>



Moana M. Hanawahine <sup>'90, S</sup>  
 Chelsey K. Harbottle <sup>'02</sup>  
 Gary K. Harris <sup>'83</sup>  
 Edmund H. Hee <sup>'65</sup>  
 George <sup>'66, 5+</sup> & Nancy Heiligman <sup>5+</sup>  
 Lee L. Henry-Chang <sup>'83</sup>  
 Myrna Yee Herron <sup>'63</sup>  
 Floyd & Amelia <sup>'68</sup> Hew Sang  
 Joel K. Hijirida <sup>'93</sup>  
 Chris <sup>'63, 5+</sup> & Gwen <sup>5+</sup> Hilbus  
 Betty M. L. Hiram <sup>'54, 5+</sup>  
 Malie Hirao  
 Bryan Ho <sup>'78</sup>  
 Timothy K. Ho <sup>'83</sup>  
 Todd T. Honnaka <sup>S, 5+</sup>  
 John T. K. Hookano <sup>'05</sup>  
 Leslie K. Hubbard <sup>'95</sup>  
 Dana K. Huddy <sup>S</sup>  
 James K. Hueu Jr. <sup>'63</sup>

Mabelmae Kamahela <sup>'66</sup>  
 Dana K. Kamai <sup>'83</sup>  
 Martina L. Kamaka, M.D. <sup>'78</sup>  
 Lililikala K. Kameeleihiwa <sup>'70</sup>  
 Kamehameha Schools Hawai'i Campus <sup>5+</sup>  
 Kamehameha Schools Ka'iawakiloumoku  
 Kamehameha Schools Legal Group  
 Kim K. Kanaiaupuni <sup>'81, S</sup>  
 Shawn M. Kanaiaupuni <sup>'83, S</sup>  
 Wayne <sup>'64</sup> & Freesia Kaneaiakala  
 Kathy L. Kanemitsu <sup>S</sup>  
 Keli'i Kaneshiro <sup>'98</sup>  
 Michelle T. Kapule <sup>S</sup>  
 Lance <sup>'88</sup> & Alecia Katahara  
 Iris J. Kauka <sup>'72</sup>  
 Sabra L. Kauka <sup>'63</sup>  
 Maile M. Kawasaki <sup>'13</sup>  
 William T. Kay, Jr. <sup>'68</sup>  
 Robert & Carol Keane

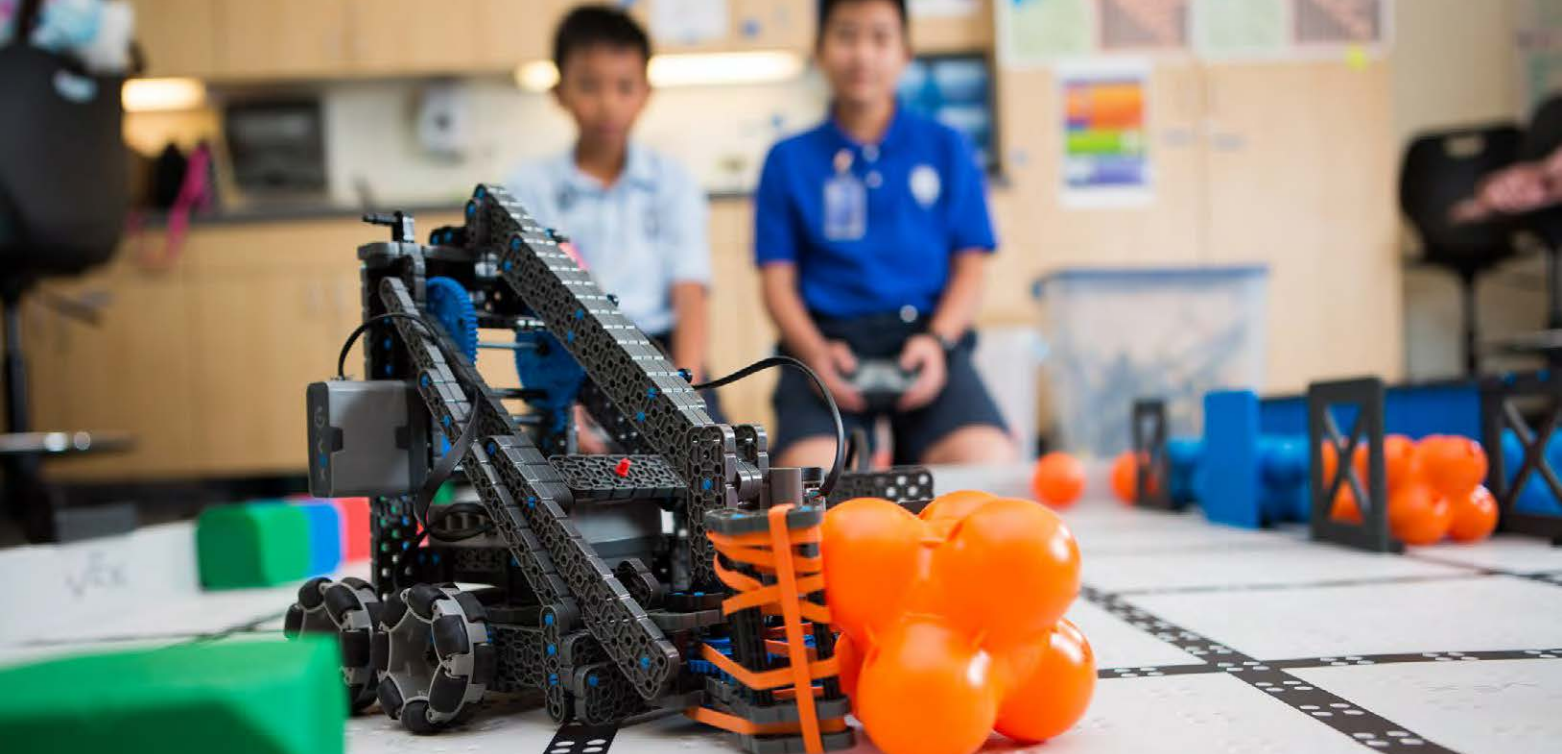
- Melissa L. Kehano <sup>'94, S</sup>  
 Bruce & Lisanne <sup>'82, S</sup> Kekuewa  
 Charline P. Kema <sup>'64</sup>  
 Ellie M. Keola <sup>'80, S+</sup>  
 T. Hoku Keolanui <sup>'78</sup>  
 Wayne & Alicia <sup>'65</sup> Kern  
 LaVerne U. Kiaha <sup>'63</sup>  
 Jodie <sup>S, 10+</sup> & Vince <sup>10+</sup> Kimura  
 Tiffany K. King <sup>'97</sup>  
 Maile A. Kloczkowski <sup>'98</sup>  
 Loren L. Knappenberger  
 Be-Jay Kodama  
 Momi Kometani <sup>'63</sup>  
 Kona Bayview Inn  
 Aaron Koseki, Jr.  
 Rawlette Kraut <sup>'66</sup>  
 Michael <sup>'85, S+</sup> & Xann Maile <sup>'84, S+</sup> Kuenzli  
 Kananaikahaku A. Kuhaulua <sup>'05</sup>  
 Kimberly Kuo <sup>S</sup>  
 Robert Kurlansky <sup>'68</sup>  
 Leonard F. Keala Kwan, Jr. <sup>S, S+</sup>  
 Jason W. Laeha <sup>'05</sup>  
 Justine C. Lafata <sup>'91, S+</sup>  
 Robert K. LaFontaine <sup>'05</sup>  
 Bernadette P. Lancaster <sup>'58</sup>  
 Warnette L. Langi <sup>'90</sup>  
 Lawnie-Lyn U. Lau <sup>'89, 10+</sup>  
 Rose L. Lau <sup>'86</sup>  
 Jared A. Laufou <sup>'03</sup>  
 Chris Laumauna <sup>'85, S, 10+</sup>  
 Jack Law  
 Tiffany N. Le Nevez <sup>'05</sup>  
 Paul Hughes & Barbara Lee  
 Natalie L. Lee <sup>'92</sup>  
 William <sup>'66</sup> & Joanne Lee  
 Shannon P. Liilii <sup>S</sup>  
 Henry A. Lindo, Jr. <sup>'90</sup>  
 Puanani Lindsey <sup>'61</sup>  
 Blaise E. Liu <sup>'75</sup>  
 Calvin Liu <sup>'85</sup>  
 Gay K. Lorch <sup>'52</sup>  
 Laurie Y. Louie <sup>'83</sup>  
 Harry K. Lovell <sup>'73</sup>  
 Julia N. Lowe <sup>'94, S</sup>  
 Jill K. Lucas <sup>S</sup>  
 Anna Lee P. Lum <sup>S</sup>  
 Tony <sup>'58</sup> & Ann Lum  
 Blayne K. Lum <sup>'95</sup>  
 Jamie Lum <sup>'80</sup>  
 Monica C. Lum <sup>S</sup>
- Ronald <sup>'68</sup> & Julia Lum  
 Mark E. MacInnis <sup>S, S+</sup>  
 Susan K. Maeda-Kimura <sup>S, S+</sup>  
 Miki Maeshiro <sup>S, 10+</sup>  
 Naomi Mahiko <sup>'65</sup>  
 Malia P. Maiava <sup>'03</sup>  
 Kanani M. Makaimoku <sup>'98</sup>  
 Gail Makuakane-Lundin <sup>'73</sup>  
 Samantha L. Malchow <sup>'95</sup>  
 Kamaile M. Maldonado <sup>'05</sup>  
 Greycelyn Maluo <sup>'68</sup>  
 Steven & Annette <sup>'70</sup> Manaday  
 Col. Kendell L. Mann <sup>'82</sup>  
 Paulene Marcello <sup>S, 10+</sup>  
 Charles & Maydean Martin <sup>'78</sup>  
 Elton T. Masaki  
 Kevin K. Matsumoto <sup>'98</sup>  
 Kalani N. Matsuura <sup>'95</sup>  
 Jeffrey N. Mau <sup>S</sup>  
 Steven Mazur <sup>S</sup>  
 Deanna L. McFadden <sup>'62</sup>  
 Kaleialoha Medeiros <sup>S</sup>  
 Robert <sup>S, 10+</sup> & Shawna <sup>S, 10+</sup> Medeiros  
 Betsy N. Medina <sup>'67, S+</sup>  
 Donald G. Meinel <sup>'68</sup>  
 Sonia Mendez  
 Sheree A. Mendonsa <sup>S</sup>  
 Jeanne W. Milam <sup>'05</sup>  
 Jubu J.P. <sup>'75</sup> & Eassie M. <sup>'70</sup> Miller  
 Abraham K. Mokunui, Jr. <sup>'80, S, S+</sup>  
 Diana L. Montez <sup>S</sup>  
 Jacqueline B. Montgomery <sup>'68</sup>  
 Patricia L. Moody <sup>'82, S+</sup>  
 Douglas Moore <sup>'02</sup> & Mariko Takekuma  
 Sandra P. Moriguchi <sup>'78</sup>  
 David A. Mortensen <sup>'71, S+</sup>  
 Dayna C. Mortensen <sup>'92</sup>  
 Elaine I. Mortensen <sup>'71</sup>  
 'Ohana of L. Kaiponohea Moses, Sr. <sup>'79, S, S+</sup>  
 Susan M. Moss <sup>'73</sup>  
 Kapi Muraoka <sup>'87</sup>  
 Claudette P. Naauao <sup>'56, S+</sup>  
 Stanley & Mavis Nagatani  
 Erin Nanea Nahuina <sup>'85, S, 10+</sup>  
 Benny C. Nary, II <sup>'71</sup>  
 Dorothea K. Nary <sup>'47</sup>  
 William L. Nary <sup>'50</sup>  
 Leanne A. Nikaido <sup>S, S+</sup>  
 Claudine Nishimura <sup>'91, S+</sup>  
 Gary Nishioku <sup>S, S+</sup>
- Kapohauolaokalanikiakia Noa <sup>S</sup>  
 Robin L. Nonaka <sup>'80, S+</sup>  
 N. Cookie Numazu <sup>S, 10+</sup>  
 Katrina-Ann R. Oliveira <sup>'92</sup>  
 Michael Oliver <sup>S, 10+</sup>  
 Tiara A. V. Ollberding <sup>'00</sup>  
 Joshua-Thad M. Oshiro <sup>'05</sup>  
 Lisa Oshiro-Suganuma <sup>'85, S+</sup> & Raymond  
 Suganuma <sup>'84, S+</sup>  
 Lynn Lehua Otake-Vierra <sup>S</sup>  
 V.L. & Joslyn <sup>'66</sup>  
 Jeremiah Pahukula Sr. <sup>'57</sup>  
 Bradley F. M. Pang <sup>'89</sup>  
 Candace A. Pang <sup>'89</sup>  
 Vernon I. Pang <sup>'68</sup>  
 Anthony M. Paris <sup>'98</sup>  
 Romie P. Parker <sup>'73</sup>  
 Samson N. Parker <sup>'73</sup>  
 Katherine Lokelani Patrick <sup>'72, S, S+</sup>  
 Stacia Peleholani <sup>'73</sup>  
 Brandon P. D. C. Penebacker <sup>'98</sup>  
 Richard Perkins <sup>'68</sup>  
 Sydney H. K. Perreira <sup>S</sup>  
 Stella B. Perry <sup>'64</sup>  
 Michelle K. Pescaia <sup>'95</sup>  
 Moses <sup>'52, 10+</sup> & Carmen <sup>10+</sup> Pestano  
 Lou Ann Peters <sup>S</sup>  
 Diane <sup>'77</sup> & Nhan Peters-Nguyen  
 Peterson Bros. Construction, Inc.  
 Lesley Ann N. Pico-Lilio <sup>S, 10+</sup>  
 Steven & Lois <sup>'65</sup> Plahy  
 Kimo G. Pokini <sup>'88</sup>  
 Randiann Porrás-Tang <sup>S</sup>  
 Stefan E. Press <sup>S</sup>  
 Melisa Garcia Preus <sup>'78</sup>  
 Evan E. Price <sup>'03</sup>  
 Emil Prigge, Jr. <sup>'68</sup>  
 Margaret B. Proffitt  
 Paula J. Purdy <sup>S, 10+</sup>  
 Emily Luana Puu <sup>'94, S</sup>  
 Vicky K. Quenga <sup>S, S+</sup>  
 Deborah N. Ramelb <sup>'77, S+</sup>  
 Treva K. Ranadey <sup>'00</sup>  
 Cory P. Reelitz <sup>'98</sup>  
 Enaulamaioaka T. Reelitz <sup>'99</sup>  
 Dawn N. Rego-Yee <sup>'96</sup>  
 Erin Y. Regua <sup>'97, S</sup>  
 Noelle Renticruz <sup>'78</sup>  
 Jon Rickard <sup>'63</sup>  
 Barbara Ann C. L. Rico <sup>'66</sup>

5+ Donors for at Least Five Consecutive Years  
 10+ Donors for at Least Ten Consecutive Years

† Deceased  
 (class year) Kamehameha Schools Alumni

S Kamehameha Schools Staff  
 FS Kamehameha Schools Former Staff





Justin <sup>5+</sup> & Venus <sup>'81, S, 5+</sup> Rosete-Medeiros  
 Irvin K. Ross <sup>'95</sup>  
 John Roxburgh, Jr. <sup>'66</sup>  
 Sharon T. Roxburgh <sup>'75</sup>  
 Bridget P. Ruane <sup>'69</sup>  
 Pearl M. A. Ryder-Kealoha <sup>'83</sup>  
 Margaret Christian Sadowski <sup>'65</sup>  
 Stephanie Sakugawa <sup>'74, S, 10+</sup>  
 Gwendolyn K. Sanders-Kaahanui <sup>'63</sup>  
 Dr. Javier Santillan  
 Aaron M. Santos <sup>'98</sup>  
 Darrin Sato <sup>S</sup>  
 Charlene A. Savio <sup>'72</sup>  
 Ernest & Mary Saxton  
 Kathleen P. Schwartze <sup>'81, 5+</sup>  
 Leona K. Seto-Mook <sup>'71</sup>  
 Richard R. Seto-Mook  
 Michael & Susan Seu  
 Bradley Shak <sup>'72</sup>  
 Eric P. Shaver <sup>'05</sup>  
 Jennifer K. Shaw <sup>'98</sup>  
 Garner D. Sheehan <sup>'87</sup>  
 Linda T. Shibano <sup>S, 10+</sup>  
 Rachel N. Shidaki <sup>'05</sup>  
 Glenn Shigetomi <sup>S</sup>  
 Neumann S. Shim <sup>'75</sup>  
 Kaumakaokalani M. Shimatsu <sup>'05</sup>  
 Lisa K. Shizuru <sup>'78</sup>  
 Edward & Laurel Kamaile <sup>'64</sup> Shultz  
 Fenner-Marie Akaka Shupe <sup>'65</sup>  
 Allan <sup>'65</sup> & Linda Smith, Sr.  
 Keoni G. Smith <sup>'85</sup>  
 Linda M. L. Soma <sup>'61</sup>  
 Kaupenaikaika F. Soon <sup>'96</sup>

Rebecca J. Soon <sup>'05</sup>  
 Bowe M. Souza <sup>'07, S, 5+</sup>  
 Joana I. Souza <sup>'01, 5+</sup>  
 Thalia Ann K. Souza <sup>'75</sup>  
 William K. Souza <sup>'65, S</sup>  
 Crystal Souza-Pagano  
 Ben & Jana <sup>'96</sup> Stern  
 The Stewart 'Ohana <sup>'91, S</sup>  
 Melissa Stewart Rodrigues <sup>'97, S, 5+</sup>  
 Shannon M. Stringert <sup>'05</sup>  
 Larry M. Sumida <sup>S</sup>  
 Michelle L. Swan <sup>S</sup>  
 Kimberly A. Swaney <sup>'05</sup>  
 Mark S. Taba <sup>S, 10+</sup>  
 Candace M. Tabuchi <sup>'78</sup>  
 Frank & Gwyn <sup>'68</sup> Taliaferro  
 Michael <sup>5+</sup> & Vivien <sup>'68, 5+</sup> Tamashiro  
 B.J. Taum  
 Keani Taylor <sup>'61, 5+</sup>  
 Chad N. Teixeira <sup>'95</sup>  
 Kim E. Terai <sup>'88, S, 5+</sup>  
 Puananionaona P. Thoene <sup>'05</sup>  
 Grenddon L. Tim Sing <sup>'78</sup>  
 Bobbie L. Tom <sup>'79, S</sup>  
 Donald & Wainani <sup>'87</sup> Tomich  
 Dean Tomita <sup>S</sup>  
 Shelly K. Torres <sup>'02, 5+</sup>  
 Eric R. Tsuji <sup>'08</sup>  
 Denise L. Tsukayama <sup>'78</sup>  
 John K. Tsukayama <sup>'78</sup>  
 Sandra I. Tuitele <sup>S, 5+</sup>  
 Marjorie L. P. Tupper <sup>'82</sup>  
 Leilani S. Turajlich <sup>'95</sup>  
 Phil K. Uyehara <sup>S, 10+</sup>

Valen Ahlo LLC  
 Ronald P. VanDeren  
 Kaulana & Kanoe <sup>S, 5+</sup> Vares  
 David H. Victor <sup>'68</sup>  
 Karana M. Vierra <sup>'05</sup>  
 Kawika A. Villa <sup>'96, 5+</sup>  
 Sheila L. Vortman <sup>'65</sup>  
 Sandee Nohea Walker <sup>'96, S, 5+</sup>  
 Elizabeth N. Walter <sup>'68</sup>  
 Constance K. Warrington <sup>'68</sup>  
 Jared Kamalani Wilson <sup>'96</sup>  
 Kimberley C. Wilson <sup>S</sup>  
 Bernadine L. P. Wong <sup>'81, S</sup>  
 Brandon K. Wong <sup>'41</sup>  
 Clifford Wong & Jeannie Kaleihiehie Wong  
 Jonathan <sup>'70</sup> & Paula Wong  
 LaVerne L. Wong <sup>'66</sup>  
 Lynette H. Wong <sup>'66</sup>  
 Billie K. Wu <sup>'05</sup>  
 Jerrellyn L. Yamada <sup>'64, 5+</sup>  
 Chason H. T. Yamaguchi <sup>'07, S</sup>  
 Leslie L. Yap <sup>'99, 5+</sup>  
 Joylynn I. L. H. Yarbrough <sup>'86, 10+</sup>  
 Dr. Kamuela E. Yong <sup>'05</sup>  
 Sienna Yoshida <sup>'86</sup>  
 Thomas Y. Yoshida <sup>S</sup>  
 Cheryl Ann Young <sup>S, 10+</sup>  
 Michele M. Young <sup>'95, S</sup>  
 Todd Young <sup>'78</sup>  
 Dean K. H. Yuen <sup>'85</sup>  
 Clinton Zane <sup>'05</sup>  
 Marya Zoller <sup>'75</sup>

# KA HUI KILIHUNE

\$1 - \$99

Kilihune is a fine light windblown mist. Just like a fine mist, donors surround us with their support. This hui highlights the importance of the act of giving and all gifts can make a difference. The hui was established to honor donors who made contributions of \$1 to \$99 during the fiscal year.

Anonymous (17)

John K. Aana <sup>'73</sup>

Lori A. Abreu <sup>S</sup>

Reiko K. Abrew <sup>'95</sup>

Theresa L. Ackerman <sup>S, 5+</sup>

Paula R. Acohido <sup>S</sup>

Cecilia Adams <sup>5+</sup>

Wendilee L. Adkins <sup>'83, 5+</sup>

Lavina M. Agader <sup>'68</sup>

Ormond Hammond & Lesley Agard <sup>'68</sup>

Bruce A. Ah Chong <sup>S</sup>

Leinaala Ah Loo <sup>'68</sup>

Leinaala S. Ah Loo <sup>'89, 5+</sup>

Kaohuokalani <sup>'05</sup> & Grace Ah Yo

Keith K. Ah Yuen <sup>'78</sup>

Neiani K. Ahakuelo <sup>'05</sup>

Byron K. Ahina <sup>'72</sup>

James M. Ahina <sup>'05</sup>

William K. Ahina, Jr. <sup>'73</sup>

Valen B. Ahlo <sup>'05</sup>

Gregory Ahuna <sup>'65</sup>

James A. Aiona <sup>S</sup>

Ashley S. Aiu <sup>'08</sup>

Bryson N. Aiu <sup>'08</sup>

Chalsea K. Aiwahi <sup>'05</sup>

Alexandres-Joan K. Akana <sup>'09</sup>

Tommy Akana <sup>'68</sup>

Suzanne <sup>'68, S</sup> & James Aki

Brandee K. Akiona <sup>'95</sup>

Thad K. Akiona <sup>'95</sup>

Roy K. Alameida <sup>'65</sup>

Raymond Kong <sup>'95</sup> & Rosie Alegado <sup>'96</sup>

Alexander P. Almeida <sup>'71</sup>

Herbert <sup>'75</sup> & Susan Almeida

Leora K. Almstrom <sup>5+</sup>

Joanne S. Amaki

Varina K. Amantiad <sup>'95</sup>

Avery K. Amasiu <sup>'13</sup>

Haley M. Amasiu <sup>'15</sup>



Joseph & Kiana Amasiu

Kandace K. Andrade <sup>'95</sup>

Kawahamae D. Andrade <sup>'78</sup>

Lorna Andrade <sup>'75</sup>

Chenin H. Angeleo <sup>'05</sup>

Sylvester <sup>'74</sup> & Zessica <sup>'84</sup> Apiki, III

Edward <sup>'94, 10+</sup> & Darice <sup>'94, S, 10+</sup> Apo

Waynette K. Apolo <sup>S</sup>

AQUA Hotels and Resorts

Jordann Ares <sup>'98, S</sup>

Julie E. Arias <sup>S, 5+</sup>

Yuuko Arikawa <sup>'95, 5+</sup>

Kristi K. Arinaga <sup>'05</sup>

Jonathan Asing <sup>S</sup>

Kyle Atabay <sup>S, 5+</sup>

Amy M. Au <sup>S</sup>

Jared K. Au <sup>'98</sup>

Travis Aucoin

Brenton & Rozlynd <sup>'05, S</sup> Awa

Keala R. Awana <sup>'05</sup>

Brannan & Raelen <sup>'00, S</sup> Bajet

Robert Baldado <sup>'75</sup>

Mareva C. Baldwin <sup>'98</sup>

Bank of America Foundation, Inc.

Angela P. Baptista <sup>S, 5+</sup>

Faith Barboza <sup>'78</sup>

Jennifer Baum <sup>'01, S, 5+</sup>

Ernest Bautista <sup>'78</sup>

Susan Becker <sup>'75</sup>

Chantel K. Beidleman <sup>'05</sup>

Kyle-Thomas K. Beirne <sup>'75</sup>

Chantelle K. Belay <sup>'95</sup>

Cyle K. Bento <sup>'05</sup>

Willowdyne M. Berntsen <sup>'78</sup>

Joanne L. Berryman <sup>S, 5+</sup>

Bryant K. Binkie <sup>S, 5+</sup>

Noela Bishaw <sup>'68</sup>

Nanette Kehau Bishaw-Bhattacharyya <sup>'73</sup>

David Dods & Kaleleonalani Blaisdell-Dods <sup>'95</sup>

Kip K. Botelho <sup>S</sup>

Cynthia S. Boyle <sup>S</sup>

Viktor Nakia P. Braffith <sup>'95, S</sup>

Patrick R. Branco <sup>5+</sup>

Quintin M. Bray <sup>'78</sup>

Casey K. Brede <sup>'05</sup>

Cody F. I. Brissette <sup>'05</sup>

Tiffanie A. Brumaghim <sup>'05</sup>

Jensen K. Buck <sup>'05</sup>

Lawrence & Beth-Ann <sup>'73</sup> Burgess

Milt <sup>'72</sup> & Danearle <sup>'75</sup> Burgess

Michael E. K. Burk <sup>'05</sup>

Milan H. Burke <sup>'05</sup>

Kevin <sup>'75</sup> & Noelani <sup>'75</sup> Burkett

Cassie-Ann H. Bush <sup>'05</sup>

Charles E. Bush <sup>'55</sup>

Kim Bustos <sup>'73</sup>

Stasey K. Butler <sup>'05</sup>

Regina J. Byrom <sup>S</sup>

Chase K. Cabana <sup>'05</sup>

Elmer J. Cabico

Michael A. Cadang <sup>'85</sup>

Jocelyn J. Calma <sup>S</sup>

5+ Donors for at Least Five Consecutive Years

10+ Donors for at Least Ten Consecutive Years

† Deceased

(class year) Kamehameha Schools Alumni

S Kamehameha Schools Staff

FS Kamehameha Schools Former Staff

- Krissy A. Calvey '05  
 Rama D. Camarillo S  
 David & Aldrena '73 Cantrell  
 Rodney Carillo  
 Andrew & Darlene '65 Carlmark  
 Raymond M. Carreira, III '05  
 Donna Jo Carter-Tani '78  
 Jessie A. Castanares '63  
 Micah M. Castro '05  
 Elizabeth Cawrey S  
 Mary Ann A. Cayetano '68  
 Brandie Cazimero '05  
 Jason M. Chai '78  
 Colette K. Chang '78  
 Douglas '78 & Ruth '77 Chang  
 Juvenna M. Chang '60, S  
 Kaulana N. Chang '05  
 Roger G. Chang S, 5+  
 Kaiolohia K. Chapman '05  
 Malia Chapman '83  
 Michelle J. Chapman '05  
 Carina A. Chernisky '06  
 Stacy Ching '78  
 Daniel K. Chong '94  
 Malorie Y. Chong S  
 Mahina L. Christian '05  
 Christle Kamaka'ala, MFT LLC  
 Donna K. Chu '78  
 Lawrence S+ & Diane S, 5+ Chun  
 Ian N. Chun '95  
 Jocelyn P. Chun S, 5+  
 Steven '84, 5+ & Regina '84, 5+ Chun  
 Glenn K. Chung '64  
 Danny S. Clark  
 Leslie K. L. Clark '00, S  
 Phyllis L. Clemente '60  
 John '68 & Ilona-May '77 Cluney  
 Whitney A. Cobb S  
 Blaine Cockett '05  
 Randal Cockett '73  
 Tamara K. Cockett '05  
 Christine V. Cody '96  
 Monica K. Coldwell S  
 Kimberly H. Coleman '05  
 Elena K. Colobong '05  
 Kele L. Coloma '95  
 Jan M. Combs '95  
 Jennifer Cone '05  
 Patricia M. Cook '55  
 Ellen M. Cordeiro S, 5+  
 Edna S. Corpuz S  
 Helen K. Cosma S  
 Calvin K. Costa '07  
 Kodie K. Costa '05  
 Sasha A. C. Costa Brum '04
- Sara O. Cox '01  
 Herb '68 & Dee '73 Coyle  
 Terise H. Cravalho '96  
 Pilikahakuimipono L. Crawford-Oliva '05  
 Kelly I. Cua S  
 Javen J. Cuban '95  
 Cecilia K. Cullen '05  
 Arnel L. Cummings '82, S, 5+  
 Ciera K. Cummings '08, S  
 Krystina K. Cunningham '05  
 Daniel A. Curnan '01  
 Chiyome L. Cutler '68  
 Michel H. Dabbs S  
 Anuheha A. Daley '95  
 Kaulana E. K. Dameg '95, S  
 Harolet L. Darakjian '68  
 Katy Lee A. Darlington '73  
 Lorna M. David '68  
 Jaimie Davis '78  
 Rowena L. Davis '78  
 Steve U. De Leon S  
 Leini E. K. De Lima '85  
 Paula De Silva '66  
 Bryan L. De Vore S  
 Deane DeCastro S, 10+  
 Georgianna DeCosta '95  
 Heather M. DeFries '98  
 Thomas & Desiree '78, S Del Rosario  
 Kiel J. H. Dela Pena '05  
 Ed S+ & Katherine '75, 5+ DeMello  
 Samuel '95 & Chanel '95 Desilva  
 Blaine K. Dias '68  
 Kailialoha K. Dias-Blake '15, 5+  
 Kumalie Dias-Blake S+  
 Rise A. Doi '05  
 Katherine K. Domingo '53  
 Nancy K. Donaldson '78  
 Mary Ann P. Dorsey '68  
 Kimo Douglas '62  
 Lisa K. Dowd '78  
 Kaiulu C. Downing '73  
 Louise K. DuPont '68  
 Kyle M. DuPonte '07, S  
 Lei-Ann M. '73 & Ronald M. Durant  
 Phyllis K. Durante '73  
 Hansrenda K. Dutro S  
 Iris Y. Eala '82  
 Calvin K. Eaton '73  
 J. Stacey Eaton S, 10+  
 David '05, S & Jennifer '05 Elia  
 Col. Geoffrey S. Ellazar, Jr. '85  
 Emerita Ellazar-Hernandez S, 5+  
 Mark S & Kristin '91 Ellis  
 Lowry A. Ellis '95  
 Mae Enfield S, 5+
- Deanne L. Enos '56  
 Christine Enrico S, 5+  
 Guy & Julie Enriques S+  
 Jaylene A. H. Espinosa '78  
 Anela M. Evans '05  
 Halia S. Evans-Bautista '17  
 Elena K. Farden '95, S, 5+  
 Kimberly A. Farrant '83  
 Vance Farrant S  
 R. Kekoa K. Faurot '78  
 Jamie K. Felicilda S, 5+  
 Jolina L. Felix-Keamoai '95  
 Diane T. Fell S  
 Ramie L. Fernandez '95  
 Carolyn N. Ferreira '74, 5+  
 Everett Ferreira '73, 5+  
 Carlene F. Flores '87, S  
 Erik K. Flores '78, S  
 Thomas Y. Fong '68  
 Jason-Adrian K. Fong-Aiu '05  
 Danelle P. Foster '95  
 Renee K. Franco '91, S, 5+  
 Kailee M. Freitas '08  
 Clyde & Darlene Fujimoto  
 Randall S. Fukino '74, 5+  
 Kaipolani M. Fukuda '05  
 Lei L. Fukuhara  
 Tracy M. L. Furukawa '89  
 Gemma C. Galindo S, 5+  
 Stacy L. Galon-Eberhart  
 Brickwood M. Galuteria '73  
 Kaulu '95 & Jan '95, S Gapero  
 Kilileo M. Garrett '93  
 Jon R. Gerber '95  
 Wayne Gillia S  
 Adam M. Goodman '06, 5+  
 Rebecca I. Goodman '04, 5+  
 Sharon I. Tomiyama-Goodman '77, 5+  
 Kayla U. Graham '06  
 Kelly-Jean Grahovac S, 5+  
 Pearl K. Granger '55  
 Kelii K. Grothmann '09, S  
 Leilani Guerreiro S  
 Carissa K. Gusman '05  
 Rochelle N. L. Guthrie '87, S  
 Erika L. A. Gutierrez '98  
 Kye F. Haina '78, S  
 Ginger L. Hamilton '73  
 Rosebelle K. Hansen '60  
 Stacie A. Harrington S  
 Emmaline L. Harris '68  
 Jill S. Harunaga '05  
 Hawaiian Electric Industries Charitable  
 Foundation  
 Ginete U. Hayes '95, 5+

Cathleen K. Hedges <sup>'84, 5+</sup>  
 Wendy R. & Albert S. Hee <sup>'73</sup>  
 Kimberly Kehaulani Hefner <sup>'98, 5+</sup>  
 Malia K. Helela <sup>'96</sup>  
 Jerusha E. Hew Len <sup>'95</sup>  
 Kerri-Ann Hewett Fraser <sup>'76, S, 5+</sup>  
 Susan Hickman <sup>'78</sup>  
 Lori M. Hieger <sup>'89, 5+</sup>  
 Allison H. K. Higa-Howerton <sup>'07</sup>  
 Sonyei K. Hijirida <sup>'93</sup>  
 Camissa K. Hill <sup>'05</sup>  
 Dorothy Hirata <sup>S, 10+</sup>  
 Pono L. Ho <sup>'05</sup>  
 Teri P. Hoe <sup>'93</sup>  
 Erma K. Hoffman <sup>'73</sup>  
 Stephen <sup>'75</sup> & Leonora Holck  
 Alexander A. Hollister <sup>'95</sup>  
 Richardson Smith & Linda Holt-Smith <sup>'66</sup>  
 Violet Hoohuli S  
 Anjoleen E. Hoopai-Waikoloa <sup>S</sup>  
 Wendell Hopkins <sup>'73</sup>  
 Paul W. Horner <sup>'73</sup>  
 Calvert E. P. Hose <sup>'90</sup>  
 Daniel K. Huddy <sup>'78</sup>  
 Randolph Hudgens <sup>S</sup>  
 David Hughes <sup>'77</sup>  
 Lance Leong <sup>'85</sup> & Andrea Hussey-Leong <sup>'83</sup>  
 Ashley K. Iaea <sup>'03, S</sup>  
 Strather D. Ing <sup>'72</sup>  
 Charlene D. Iokia <sup>'78</sup>  
 Joshua L. Irvine <sup>'03</sup>  
 Randall K. Ishikawa <sup>'78</sup>  
 Amy K. Jackson <sup>'05</sup>  
 Joan Umiokalani Jensen <sup>'01</sup>  
 Jennifer K. Joaquin <sup>'92</sup>  
 Jennifer K. Jones <sup>S</sup>  
 Joan N. Jones <sup>'68</sup>  
 Mark A. Jones <sup>S</sup>  
 Elaine H. Jourdane <sup>'68</sup>  
 Annette L. Kaai-Lee <sup>'68</sup>  
 Lynol Kaawaloa <sup>'78</sup>  
 Rashanti K. Kaawaloa <sup>S, 5+</sup>  
 Jodie Kaderli <sup>S</sup>  
 Lehua P. Kahalewai <sup>'93</sup>  
 Aaron K. Kahaloa <sup>'05</sup>  
 Jessie M. Kahaloa <sup>'05</sup>  
 Keith M. Kahoano <sup>'68</sup>  
 Lily N. Kahoano <sup>'68</sup>  
 Sharleen H. B. Kahoopii <sup>S, 5+</sup>  
 Kahealani C. Kaiama <sup>'86</sup>

Hiram Kaikaina <sup>'95, S</sup>  
 Kalei Kailihiwa <sup>S</sup>  
 Ramona L. Kaiwi <sup>'78</sup>  
 Tiani A. Kajiwaru <sup>'03</sup>  
 Kaohinani M. Kalama <sup>'05</sup>  
 Jes K. Kalawa <sup>'93</sup>  
 Irma Kalehuawehe <sup>S</sup>  
 Keith Kaleikini <sup>S</sup>  
 Janis F. Kalua <sup>'71</sup>  
 Dorene “Deenie” Tagudin Kam <sup>'85</sup>  
 Kathy V. Kama <sup>S</sup>  
 Lt. Col. Peter Kama <sup>'53</sup>  
 Dwynn L. Kamai <sup>'79, 5+</sup>  
 Isaac L. Kamai <sup>'03</sup>  
 Joshua Alexander P. Kamai <sup>'05</sup>  
 Malia Kamaka <sup>'78</sup>  
 Jessica N. Kamalu <sup>'03</sup>  
 Keala K. Kamalu '08  
 Deidre N. Kamana-Marzan <sup>'77</sup>  
 Kamehameha Schools Waianae Coast  
 Region  
 Laury K. Kanae <sup>'03</sup>  
 Maile Kane <sup>'78</sup>  
 Deanne Kanekuni <sup>'78</sup>  
 Veriann Ekela Kaniaupio-Crozier <sup>S</sup>  
 Russell P. Kaniho <sup>'83</sup>  
 C. Kaopua  
 Byron S. Kaopuiki <sup>'68</sup>  
 Lynn Kaopuiki <sup>S, 5+</sup>  
 Sarah K. M. Kaopuiki <sup>'03</sup>  
 Laurie L. Kapaona <sup>'78</sup>  
 Kekoa K. Kapua <sup>'03</sup>  
 Debbie Kato <sup>S</sup>  
 M. Malia Kau <sup>'91, 5+</sup>  
 Milton J. Kauahi <sup>'78</sup>  
 Kanai <sup>'82</sup> & Carol <sup>'82</sup> Kauhane  
 Lori-Beth N. Kauhane <sup>'78</sup>  
 William A. Kauhola <sup>S</sup>  
 Donovan A. Kauli <sup>'05, S</sup>  
 Shaun K. Kauhohou <sup>'03</sup>  
 Todd K. Kaulukukui <sup>'95</sup>  
 Maile Kauo <sup>'78</sup>  
 Reyn K. Kaupiko <sup>'05</sup>  
 Julia A. Kaupu <sup>'68</sup>  
 Keala R. K. Kaupu <sup>S</sup>  
 Karen A. Kaupu <sup>'86</sup>  
 Llewelyn A. Kauwe <sup>'73</sup>  
 Carol K. Kawai <sup>'53</sup>  
 Kaala <sup>S, 5+</sup> & Kelehua <sup>'94, 5+</sup> Kawai  
 Daniel Kawaiaea <sup>'78</sup>

Francis Smith & Shelley Kawakami-Smith <sup>'68</sup>  
 Katherine K. Kawamata  
 Leslie S. Kawamoto  
 Leslilyn P. Kazunaga <sup>'83</sup>  
 Kekoa O. Pololu K. Kealoha <sup>'03</sup>  
 James E. Keawe, Jr. <sup>'08</sup>  
 Stacia A. Keaweehu-Ahina <sup>'03</sup>  
 Harold <sup>'68</sup> & Ann Marie Keener  
 Kody Kekoa <sup>'10</sup>  
 Kaimi W. Kellett <sup>'03</sup>  
 Briana-Rane K. Keo <sup>'03</sup>  
 Tracy <sup>'78</sup> & Debbi-Jaye <sup>'80</sup> Keolanui  
 Tamsin K. Keone <sup>'93</sup>  
 Dallas Eugene K. Kia <sup>'02</sup>  
 Chester K. Kiaha <sup>'52</sup>  
 Dr. Scott T. Kikiloi <sup>'93, S</sup>  
 Jubylee K. Kilakalua <sup>'03</sup>  
 Kori K. Kim <sup>'03</sup>  
 Randy M. Kim <sup>'03</sup>  
 Wray E. Kim <sup>'78</sup>  
 Kapena C. Kimball <sup>'03</sup>  
 Ronald S. Kimball <sup>'73, S</sup>  
 Jessica K. Kim-Campuspos <sup>'93</sup>  
 Lea M. Kimura <sup>'03</sup>  
 Charles C. Kippen <sup>'68</sup>  
 Daniel <sup>'71</sup> & Mervlyn <sup>'73, S</sup> Kitashima  
 Kaula N. Knoche <sup>'03</sup>  
 China N. Kodani <sup>'07</sup>  
 Skyler Y. Kodani <sup>'00</sup>  
 Susan Koehler <sup>'78</sup>  
 Bruce & Georgi <sup>'68</sup> Koepp  
 Warnette L. Kondo <sup>'62</sup>  
 Raymond Kong <sup>'95</sup> & Rosie Alegado <sup>'96</sup>  
 Randall Kop <sup>'78</sup>  
 Sonya Kurisu <sup>S, 5+</sup>  
 Sharon L. Kuroda <sup>'73</sup>  
 Roberto Jacob C. Laanan <sup>S</sup>  
 Christine N. Ladd <sup>'70</sup>  
 Kahealani Z. Lakalo <sup>'93</sup>  
 Randy A. Lake <sup>'73, S, 5+</sup>  
 Timothy K. Lambert <sup>'03, 5+</sup>  
 Inocencio Lapenia <sup>S</sup>  
 Jeanne Lau <sup>'78</sup>  
 Nicole Hokulani Lau <sup>'90</sup>  
 Ihilani C. J. Laureta <sup>'03</sup>  
 Coby A. Ledbetter <sup>'03</sup>  
 Deanna Lee <sup>'68</sup>  
 Gracelyn L. E. Lee <sup>'83</sup>  
 Larry Lee <sup>S</sup>  
 Jeremy B. Leftwich <sup>'93</sup>

5+ Donors for at Least Five Consecutive Years  
 10+ Donors for at Least Ten Consecutive Years

† Deceased  
 (class year) Kamehameha Schools Alumni

S Kamehameha Schools Staff  
 FS Kamehameha Schools Former Staff

Karen L. Lelewi '93  
 Namlyn S. Leonard <sup>S, 5+</sup>  
 Catherine K. Leonardi '93  
 Lance Leong '83 & Andrea K. Hussey-Leong '83  
 Lindsey M. Leong '13  
 Nathan K. Leong '84  
 Donna M. Leu '76  
 Michael D. Lewis '05  
 Sandra L. Lighter-Jones <sup>S</sup>  
 Gordon Liljenquist '02  
 Vernal Lilly <sup>S</sup>  
 Kainoa J. Lincoln '95  
 Susan Lincoln '78  
 Paul K. Lindo  
 Darryl Lindsey '78  
 Jade Ling '78, 5+  
 Gaylene K. Lolofie '73

Francis G. MacKenzie '68  
 Genevieve K. Maertens-Stokes '98  
 Taryn K. Magalianes '05  
 Maylyn A. Magno-Gomes <sup>S</sup>  
 Lonnie W. Mahi '73  
 Mahina Made  
 Lance K. Mahoe '87  
 Teri Lee Maielua '72  
 Diedre T. Maika <sup>S, 5+</sup>  
 Melvin E. Makahanaloa '56  
 Jarad L. Makaiiau '93  
 Margo L. Makanani '68  
 Robin-Gay P. Makapagal '68  
 Rayleen A. Makekau '68  
 Aleah N. Makuakane '05  
 Malia N. Manalo '93  
 Jarraetehani K. Manasas <sup>S</sup>

Sara J. McDiarmid '05  
 Richard & Puaala McElhanehy  
 Julian McFadden '78  
 Kelvin C. McKeague '95  
 Konnie-Lee N. McKeague '95  
 Melvin A. McKeague '73  
 Alyssa K. McMillan '03  
 Myra K. McShane '98  
 Uluwehi Meade-Viernes '92  
 Malia A. Medeiros '75  
 Cindy M. Melim '87  
 The Melim 'Ohana '87  
 Tamara T. Melton '93  
 James K. Mersberg '78  
 Felicity K. Meyer '93  
 Russell K. Meyer '85  
 Michele N. Meyers '98

MGM Resorts Foundation  
 Nicole P. Mijares '03  
 Maile N. Miki '09  
 Chelsea A. Miller '03  
 Christy L. Mishina '88, <sup>S</sup>  
 Chanel A. Miura '98  
 Norman A. Miyasato '78  
 Sharon Miyata <sup>S, 5+</sup>  
 Khaila A. Moke-Sakamoto '14, 5+  
 Reed Mokiao '78  
 Sean A. Mokiao <sup>S</sup>  
 Ted L. Mokiao '68  
 Winifred N. Mokiao '68  
 Harry '61 & Puanani Moleta, Sr.  
 Maedyne Molina  
 Avery A. Montibon '93  
 Kanani L. Morris '78  
 Robert & Paige Moura  
 Bill '63 & Patricia Mowat  
 Shelley K. Muneoka '03  
 Gail P. Murakami '78, <sup>S</sup>  
 Nā Kula Kamali'i 'o Kamehameha ma  
 Paukukalo  
 Celeste M. Naeole '92  
 Aaron M. Nahina '03  
 Alana Anuheha Nakahara '05, <sup>S</sup>  
 Liane Nakamura <sup>S</sup>  
 Luana S. Nakano '66  
 Lynn K. Naluai '93  
 Sheryl Nalani A. Naluai <sup>S</sup>  
 Brandi K. Namahoe '93  
 Cyrus H. Naone '03  
 Chris K. Nascimento '68  
 Lewis Naumchik '77, 5+  
 Nia N. Naumu '03  
 Raymond I. Navarro '68  
 Jessica P. Nee <sup>S, 5+</sup>  
 Marie E. Neilson '90



Rand T. Lono '05  
 Grant I. W. T. Loo '74, 5+  
 Reid S. Loo '03  
 Bronson I. Lopez '96  
 Roxanne N. Lopez '88  
 Leora Loughmiller '78  
 Brendan '74, 10+ & Rae Loui '10+  
 Brandon I. Lozano '05  
 Vincent M. Lucero '93  
 Kenneth A. Luckey '68  
 Naleisha K. Lucrisia '03  
 Glen Luecke '83  
 Joann Lum '72  
 Mervyn Lum '78  
 Stanley H. Lum '73  
 Stanley Lum '78  
 Tiare K. Lum '91, 5+  
 Geraldine Lund '73  
 Bryce H. Luning '05  
 Gerilyn A. Lutu-Fosi '85

Romeo & Edna Manlapaz  
 Lahela H. Manning '05  
 Elmer A. Manuel <sup>S</sup>  
 Hawley K. Manwarring '53, 5+  
 Darin K. Mar '83  
 Suzanne Marciel '77  
 Darryl-Jean K. Mark '69, 5+  
 Geraldine H. Martin '78  
 Jeffrey Martin '78  
 Melody A. M. Masoe '03  
 Kauakea C. Mata '03  
 Nahaleomakaala M. Mateo-Panilo '93  
 Chablis G. Mathai '03  
 Tricia L. Mynar <sup>S</sup>  
 Cathleen P. J. Mattoon '50  
 Shaunna D. Maunupau Hackett '05  
 Shannon K.K. McCandless '03  
 Nicole M. McClellan '03  
 William Henry Kekoa McClellan '67  
 Robert A. McClung '73

Barbara Jean L. Nesbitt '78  
 IvyJean L. New-Christopher S  
 Kaneali'i '94, S & Jacqueline '94 Ng-Osorio  
 Raymond Ngum S  
 Courtney A. Nichols S, 5+  
 Jacquelyn L. Niederschulte '05  
 Puamana Ninomoto '78  
 Candis E. Nishimitsu S  
 Jamie U. Nishimura '05  
 Mae C. Nishimura S  
 Zelda Nishimura '78  
 Chanda-Ann T. Nouchi S  
 Malcolm J. Nozoe '68  
 James & Julie Nurre  
 Jason H. Nurre '97  
 Jason V. Obenchain S  
 Luana L. Ogi '75  
 Gregg K. Okamitsu '78  
 Trisha Okawa S  
 Rachel R. Okihiro  
 Andrew T. Okubo S  
 Robert Okuhara S  
 Cindy U. Olaso '78  
 Creighton Oliveira '75  
 Francis & Leilani '48 Oliveira  
 Jessica M. Olowofoyeku '95  
 Amy T. Ono '92  
 Edward C. Ontai '87  
 David H. Oride '05  
 Haunani M. R. Orsillo '92  
 Teresa K. Ortiz '93  
 Deidre M. Oshiro '68  
 Brian L. Oue '78  
 Nathan O. Owens S  
 Nilton & Linda Oyama S, 5+  
 Leland K. Ozawa  
 Elizabeth H. Pa '73  
 Erin K. Pacheco '10  
 Haunani J. Pacheco '68  
 Chenoa A. Pagaduan '98  
 Leighton Pahukula, Jr. '91  
 Gregory Paik S  
 Brooke M. Pai-Paige '95  
 Bronson A. Paishon '05  
 Melissa L. Paiva S  
 Billy James Palaualelo, Jr. '05  
 Keahi '95 & Kristine Palaualelo  
 Laura K. Palea '05  
 Keven J. Palmerton '73  
 Sterlene M. Palmerton '78  
 Tatiana P. Panee '05

Peter K. Park '60  
 Allan '68 & Ellen '68 Parker  
 Drake N. Parker '93  
 Roger D. Patao S, 5+  
 Sharon-Ann K. Patao '72  
 Danielle L. Patoc '73  
 Anna N. Peahu '83  
 Bronwen E. Pedlar '73  
 Justin Pequeno S  
 Brittini K. Peralto '05  
 Roby-lyn D. Perotti '05  
 Kyle-Leslie K. Peru '05  
 Edward H. Pestana  
 Jeffrey P. Peterson '60  
 Sharon M. L. Y. Petrulo '82  
 Dolly Manley Phillips '48  
 Richard J. Phillips '68  
 Ciel K. Pia '05  
 Uilani A. Piena '73  
 Cindi Pila '90, S  
 Dolores M. Pinao

Blanche L. Richmond '77  
 Kaholo & Chauna '01, S Rickard  
 Jordan Rickards  
 Kristy Lynn U. Riley '96  
 Malia K. Risner '95  
 Liane Robinson S  
 Gayhart B. Rodrigues '68  
 Henry M. Rogers '02  
 James M. Rogers '73  
 Leahy Rondal '96  
 Sheldeen L. Ronia '82  
 Robert & Tana Rosehill S, 5+  
 Stacy Rosehill-Baker S  
 Tiffany D. Rosenthal '98  
 Jerry E. Rother '68  
 Carolann P. Rowe '82  
 Shea 5+ & Rachele '94, S, 5+ Saffery  
 Raenissa N. Sagapolutele '98  
 Shannon K. Sagapolutele '95  
 Saito 'Ohana  
 Nyles R. K. Sakuma S



Claire E. Pinto '55  
 Ernest M. Pirga S  
 Joseph M. Plencner S, 5+  
 Lorna Poe '70  
 Barbara A. Pontoriero  
 Moani M. Portillo '05  
 Abreliana Pospieski  
 Shyana K. Pratt '05  
 Vickie Punua-McGinnis '78  
 Kristen H. Purdy S  
 Alexander Quizon  
 Minoaka N. Rabusitz '05  
 Luana L. N. Ragasa '12

Kathryn H. Ralar '78  
 Kelli Ann P. Ralar S  
 Brandon Ramaila S  
 Chazlynn M. Rambac '05  
 Liana M. Ramos '95  
 Charles & Jill Ramsey  
 Darcel Rankin Genobia 5+  
 Lucianne M. Rapis '95  
 Cindy Rawlins Manaos '78  
 Florence Respicio S, 5+  
 Patrick & Nicole Reyes '02  
 Stacy P. Rezentes '77, S  
 R. Ihilani Richardson-Ortiz '95

5+ Donors for at Least Five Consecutive Years  
 10+ Donors for at Least Ten Consecutive Years

† Deceased  
 (class year) Kamehameha Schools Alumni

S Kamehameha Schools Staff  
 FS Kamehameha Schools Former Staff

Diana L. Sanchez <sup>S</sup>  
Kealalaina F. Sanchez <sup>'95</sup>  
Francine T. Sandell  
Rocco C. Sansone <sup>'68</sup>  
Galen L. Santana <sup>'05</sup>  
Giselle-Anne K. Santana <sup>'05</sup>  
Brenda P. Santos <sup>'78</sup>  
George Santos, Jr. <sup>S</sup>  
Christy J. A. Sato <sup>S, 10+</sup>  
Jose A. Saucedo <sup>S, 5+</sup>  
Anthony Say <sup>'75</sup>  
Mahina Cumpston Sayin <sup>'05</sup>  
Marshall K. Schroeder <sup>'10</sup>  
Carlos & Huifeng <sup>S, 10+</sup> Scott  
Arlene B. Scoville <sup>'75</sup>  
Scott W. Seu <sup>'85</sup>  
Anela Shamel <sup>'73</sup>  
Tiffany Ann H. Shim <sup>'05</sup>  
Jodi Y. Shimabukuro <sup>S</sup>  
Bonnie E. P. Shimatsu <sup>'68</sup>  
Russell Shimooka <sup>'78</sup>  
Robbie Ann K. Shimose <sup>S, 10+</sup>  
Ululani L. Shiraiishi <sup>S</sup>  
Jantien K. Shizuru <sup>'15, S</sup>  
Kenneth G. Silva <sup>'78</sup>  
Terri Lynn Silva <sup>'78</sup>  
Katherine K. Simciok <sup>'73</sup>  
Randall K. Sing <sup>'68</sup>  
Camille L. Sismar <sup>'05</sup>  
Kekoa L. Smith <sup>'05</sup>  
Rosemary L. Smythe <sup>'95</sup>  
Sean T. K. Soon <sup>'06</sup>  
Cathleen K. Souza <sup>'92</sup>  
Douglas Souza <sup>'78</sup>  
Kukahoomalu Souza <sup>5+</sup>  
Nadene K. Souza <sup>'90</sup>  
Bertram K. Spain <sup>'78</sup>  
Caleb <sup>'05</sup> & Megan <sup>'05</sup> Spencer  
Helene L. Spencer <sup>'73</sup>  
Katharine J. Spencer <sup>'02</sup>  
Lauren M. Spencer <sup>'05</sup>  
Malaea I. Spencer <sup>'05, S</sup>  
Shannon M. Spencer <sup>S, 5+</sup>  
Allison M. Springer <sup>'05</sup>  
Patrick J. Stachel <sup>'05</sup>  
Amelia J. Sterling <sup>S</sup>  
Lawrence & Sydney <sup>'85</sup> Stevens  
Ray K. Stone <sup>'70</sup>  
Austin K. Streadbeck <sup>'08</sup>  
Tina L. Stuart <sup>'62</sup>  
Chantelle L. K. Sua <sup>'05</sup>  
Lincoln K. Suan <sup>'05</sup>  
Anna Sumida <sup>S</sup>  
Darrelyn Y. Sumile <sup>S</sup>  
Jeannette M. T. Sunn <sup>'98, S, 5+</sup>

Nicole N. Suzuki <sup>'95</sup>  
Kanani Y. Tabura <sup>'98</sup>  
Hayden H. N. D. Takahashi <sup>'14, 5+</sup>  
Holden K. M. D. Takahashi <sup>'10, 5+</sup>  
Elizabeth K. Takamori <sup>'05</sup>  
Janel A. Takasaki <sup>'95</sup>  
Chad <sup>'95, S, 10+</sup> & Lisa <sup>'94, S, 10+</sup> Takatsugi  
Carol A. Takatsuka <sup>'65</sup>  
Brian K. Takemura <sup>S</sup>  
Robbyn K. Takeuchi <sup>'90</sup>  
Teri R. Takishita <sup>S</sup>  
Charlene Tamanaha <sup>'75</sup>  
Elizabeth L. Tanaka <sup>'95</sup>  
Wailani K. Tanaka <sup>'05</sup>  
Maluikau N. P. Tang <sup>'12</sup>  
Dana K. Tanigawa <sup>'98</sup>  
Todd K. M. Taniguchi <sup>'05</sup>  
Samantha K. Tanuvasa <sup>'98</sup>  
Kekoa A. Taparra <sup>'08</sup>  
Vichele Lee A. Tavares <sup>'95</sup>  
Leinani Taylor <sup>'05</sup>  
The Kula Foundation  
The Mountain Apple Company <sup>10+</sup>  
Kenneth & Bernice Ku'ulei <sup>'67</sup> Thompson  
Linda Thompson <sup>S, 5+</sup>  
Robin L. Tibaduiza <sup>'78</sup>  
Lisa K. Tilton <sup>'91</sup>  
Jacqueline H. Tingle  
James <sup>'85</sup> & Pualani <sup>'85, S</sup> Todd  
David A. Tom <sup>'73</sup>  
Tomczyk 'Ohana  
Carolyn Tomiyama <sup>'52, 5+</sup>  
Jodie Y. W. Toyota <sup>'85, S, 10+</sup>  
Raymond E. Truman <sup>'78</sup>  
Melissa N. Tsuha <sup>'05</sup>  
Lynn Tsunekawa <sup>'75</sup>  
Amber Tupou <sup>'96</sup>  
Nicole M. Tuteur <sup>'05</sup>  
Mara L. Tuzon <sup>'90, 5+</sup>  
Beryl K. Tyau <sup>'75</sup>  
Shawna H. Uale <sup>'05</sup>  
Keikilani R. Uehara <sup>'95, S</sup>  
Guy Ulii <sup>S</sup>  
Mary A. Ulrich <sup>'78</sup>  
Shane K. Valdez <sup>'05</sup>  
Yvonne Bayobay Valentine <sup>'78</sup>  
Christy K. Valledor <sup>'96</sup>  
Adela P. Valmoja  
Lissa-Aubree <sup>'05</sup> & Kyle Varde  
Allison K. Vaughan-Darval <sup>'95</sup>  
Lise K. Vaughan-Sekona <sup>'95</sup>  
Kristin D. K. Vickers <sup>'05</sup>  
Danette H. Victorino <sup>'68</sup>  
Wayne & Phyllis <sup>'75</sup> Vidinha  
Ruth K. Vierra <sup>'73</sup>

Trudi Vierra <sup>S</sup>  
Donna Vincent <sup>'75</sup>  
Gilbert H. Visser <sup>'05</sup>  
Lehua Vivas  
Cheyne K. Wago <sup>'05</sup>  
Nancy Wago <sup>'78</sup>  
Kai <sup>'86</sup> & Lisa Ann <sup>'83</sup> Wainee  
Lola L. Wakida <sup>'78</sup>  
Chivas H. Wakuta <sup>'05</sup>  
Jesse R. Walker <sup>'05</sup>  
Ellen J. Walton <sup>'72</sup>  
Keith K. Wannomae <sup>'98</sup>  
Van Warren <sup>'78</sup>  
Russell A. Wassman <sup>'05</sup>  
Scott Watanabe <sup>S, 5+</sup>  
Andrew K. Watson <sup>'76</sup>  
Shelley H. Weatherwax <sup>'88</sup>  
Kimo T. Weaver <sup>S, 5+</sup>  
Hokuaonani D. Weeks <sup>'03, S</sup>  
Stephanie Whalen <sup>'78</sup>  
Marjorie U. White <sup>'57</sup>  
Taylor Whittington <sup>'78</sup>  
Pono Wichman <sup>'05</sup>  
Pualani J. Wilmington <sup>'78</sup>  
Herbert R. Wilson <sup>'61, S, 5+</sup>  
Triscilla N. K. Wilson <sup>'00</sup>  
Keenyn M. Won <sup>'08</sup>  
Don S. Wong <sup>'63</sup>  
Donnita L. K. Wong <sup>'85</sup>  
Harrison Wong <sup>'73</sup>  
Jayme P. K. Wong <sup>'05</sup>  
Kevin M. Wong <sup>'08</sup>  
Kurt I. Wong <sup>'08</sup>  
Lawrence I. Wong, Jr. <sup>'83, S</sup>  
Robbyline M. Wong <sup>'78</sup>  
Wallace Wong <sup>'77</sup>  
Eugene & JoAnn <sup>'71, S</sup> Kam  
Lehua N. Wood-Sotelo <sup>'05</sup>  
Hoolehua N. Wright <sup>S</sup>  
Allie H. S. Yamashiro <sup>'15</sup>  
Sheldon M. Yano <sup>'75</sup>  
Pauline P. Yap <sup>'78</sup>  
Tyler K. Yates <sup>'05</sup>  
Ellareen L. Yee Poong <sup>S, 5+</sup>  
Shanlee K. Yeung <sup>'95</sup>  
Courtney L. Yin-La Voie <sup>'95</sup>  
Iris Ann K. Yocum <sup>'66</sup>  
Wesley K. Yoon <sup>'93</sup>  
Dennis K. Young <sup>'68</sup>  
Stanford Young <sup>'73</sup>  
Kami K. Yuen <sup>'96</sup>  
Victoria Marie K. Yuen-Carvalho <sup>'05</sup>  
George Yukitomo <sup>'73</sup>

## Following Pauahi's Footsteps

# Alumni Giving

**KAHIAU**, or selfless giving, captures the essence of Pauahi's love for her Hawaiian people. This chart recognizes the alumni of Kamehameha who choose to emulate her generosity by accepting the opportunity to help other Hawaiians.

# \$236,564

Total Gifts from Alumni

HIGHEST GIFT AMOUNT

**\$19,857**  
Class of 1978

HIGHEST PARTICIPATION

**44.4%**  
Class of 2003

### ALUMNI GIVING SUMMARY

Class Year	Level of Participation (%)	Number of Donors	Total in Class	Total Gifts	Class Year	Level of Participation (%)	Number of Donors	Total in Class	Total Gifts
1946	4.8%	1	21	\$200	1982	4.8%	16	334	\$2,976
1947	4.3%	1	23	\$100	1983	13.5%	46	341	\$4,319
1948	7.1%	3	42	\$93	1984	3.4%	12	355	\$5,027
1949	3%	1	33	\$687	1985	2.3%	8	355	\$1,535
1950	7.5%	4	53	\$2,307	1986	2.3%	8	344	\$812
1951	1.8%	1	55	\$500	1987	4.6%	17	369	\$6,073
1952	10%	5	50	\$744	1988	3.1%	11	351	\$3,580
1953	5.7%	4	70	\$107	1989	3.3%	13	391	\$4,820
1954	6.9%	5	72	\$4,400	1990	3.7%	15	403	\$1,819
1955	7.6%	6	79	\$355	1991	4.6%	19	414	\$5,359
1956	7%	6	86	\$560	1992	4.3%	18	419	\$2,675
1957	4.3%	4	93	\$11,610	1993	27.1%	109	402	\$16,130
1958	3.9%	4	103	\$770	1994	3.4%	14	408	\$6,540
1959	0%	0	134	\$0	1995	4.2%	18	427	\$2,915
1960	1.9%	3	159	\$1,220	1996	4.8%	20	419	\$3,019
1961	6.2%	11	178	\$7,645	1997	2.7%	12	442	\$4,950
1962	6.1%	11	181	\$2,640	1998	7.7%	34	440	\$2,785
1963	15.9%	38	239	\$4,180	1999	1.1%	5	446	\$1,750
1964	3.7%	9	246	\$995	2000	2.1%	9	437	\$1,589
1965	2.2%	6	272	\$2,225	2001	1.4%	6	425	\$635
1966	7.8%	20	258	\$8,918	2002	1.8%	8	437	\$710
1967	3.5%	11	315	\$2,729	2003	44.4%	195	439	\$9,518
1968	28.4%	87	306	\$1,050	2004	0.5%	2	435	\$74
1969	2%	5	254	\$1,440	2005	1%	3	440	\$745
1970	2.8%	9	324	\$1,440	2006	1%	5	689	\$5,132
1971	5.9%	19	320	\$11,837	2007	1%	5	671	\$193
1972	3.9%	12	305	\$10,975	2008	1.7%	12	689	\$417
1973	13.4%	46	343	\$7,638	2009	1%	4	626	\$245
1974	2.9%	9	314	\$18,667	2010	1%	4	562	\$117
1975	1.9%	6	321	\$960	2011	0%	0	677	\$0
1976	4.4%	15	343	\$5,796	2012	0.3%	2	686	\$60
1977	4.7%	16	339	\$3,726	2013	1%	6	685	\$160
1978	38.8%	127	327	\$19,857	2014	0.4%	3	690	\$154
1979	1.9%	6	322	\$1,640	2015	0.1%	1	701	\$24
1980	1.7%	6	353	\$764	2016	0%	0	705	\$0
1981	1.7%	6	344	\$912	2017	0.1%	1	700	\$20

Please note the Alumni Giving summary reflects donations made by individual donors within Fiscal Year July 1, 2017 to June 30, 2018.



# I Mua Nā Haumāna

## 2017-2018 Scholarship Recipients

**THE PAUHI FOUNDATION DISBURSED OVER \$698,000** in scholarships to more than 200 Native Hawaiian learners last fiscal year. Recipients ranged from high school seniors from Kamehameha Schools and other private and public high schools to current college students. We also continue to see a rise in the number of non-traditional students who are now seeking the opportunity to obtain a college education.

Our continued success is due to the many donors who have established and/or funded these educational opportunities. Pauhi's legacy lives on through their generosity.



**\$698,000+**

In scholarships disbursed in FY 2018 to

**200+ Native Hawaiian learners**

**LEANNE KEALOHA FOX, PH.D.**  
BIOMEDICAL SCIENCES

Recipient of the Bernice Leinani Kuakini and Henry Keanu Ahlo Scholarship, the Ashley Meleana Joy Scholarship and George Hi'ilani Mills Scholarship



As a young mother working full-time, Dr. Kealoa Fox's post-high educational path was an arduous one, but she was driven to succeed for her

'ohana and for the betterment of the lāhui.

With support from family members and scholarships from the Pauhi Foundation, Fox culminated her nine-year journey in 2017 with a doctorate degree in biomedical sciences from the University of Hawai'i at Mānoa's John A. Burns School of Medicine.

**TANEESHA ASING**  
BACHELOR OF ARTS CANDIDATE,  
EDUCATION

Recipient of the Kamehameha Schools Class of 1960 Scholarship



Taneesha Asing knows firsthand the value of a quality education.

Born and raised in Papakōlea, O'ahu, Asing witnessed the struggles of

homestead life - using the experience as motivation to work hard and excel in the public school system.

After initially planning to pursue medicine in college, she changed her major to education – a passion she developed after realizing she loved helping others by sharing her knowledge. With kōkua from the Pauhi Foundation's Kamehameha Schools Class of 1960 Scholarship, she is on path to earn her degree by 2020, and ultimately, achieve her dream job as an elementary school teacher.

# 2017-2018 Scholarship Recipients

Mahalo nui to the thousands of donors who made the choice to join the Pauahi Foundation in uplifting our lāhui. Your gift ensures that more of our Hawaiian learners have a chance at a better life through education.

## 1982 Green Machine Scholarship

Billie-Ann Bruce

## 2010 Legends Scholarship

Johnette Funtanilla

## Admiral Kihune Scholarship

Ihilani Kamau<sup>'18</sup>

## Ali'i Chang Scholarship

Kahi Hoshijo<sup>'15</sup>

## Allen A. Bailey Scholarship

Kenneth Ho

John Villiarimo

## Anne H Myers Scholarship

Marcus Faufata-Pedrina

## Ashley Meleana Joy Scholarship

Kadee-Kalia Tamashiro

## Bernice Leinani Kuakini Ahlo and Henry Keanu Ahlo Scholarship NEF

Nadia Ibarra

## Blaise A. Kepo'okelaokakai Baldonado Scholarship

Nicole Furtado

## Blossom Mossman Nary Scholarship

Jordan Cummings<sup>'18</sup>

Elijah Davidson<sup>'18</sup>

## Bruce T. and Jackie Mahi Erickson Scholarship

Jae-Dee Kaeo-Jeremiah

## Charles Cockett 'Ohana Scholarship

Desiree Naluai

## Charles P.M.K Burrows Hui Lama Science Scholarship

Kauilaonalani Tengan<sup>'18</sup>

## Charles S. Iwata, Jr. Memorial Annual Scholarship

Kyle Nakatsuka<sup>'11</sup>

## Choy-Kee 'Ohana Scholarship

Zoe Lilo

## Christine Alicata/Daisy Bell Memorial Scholarship

Taelee Kimura<sup>'18</sup>

## Chuck and Fred Rudolph Named Endowment

Keala Swafford

## Col. Curtis Kekoa (KS '40) and Nenita Maldonado Kekoa Scholarship

Lilinoe Kekaula-Van Gieson

## Dan and Rachel Mahi Educational Scholarship

Christina Kaleiwahea

## Daniel Kahikina and Millie Akaka Scholarship

Alakai Iaea-Russell

Ashlyn Weaver

## David A. Mortensen KS '71 D.A.M Scholarship

Genevieve Grace

## David and Julia Desha Scholarship

James Ahuna<sup>'11</sup>

Aaliikumakani Dukelow

Allison Dupre

Juvette Kahawaii

Noah Kiakona

Madison Maeshiro<sup>'15</sup>

Abraham Nahulu

Daniel Pavao

Stanford Puahi

David Kalani Goldstein, KS'70 Scholarship  
Alexander Guerrero

David Lorch Music Scholarship  
Kamuela Akeo  
Makana Larger<sup>'18</sup>

De Witt Wallace Scholarship  
Brock Barr<sup>'18</sup>  
Michelle Murata<sup>'18</sup>  
Ashley Parker<sup>'18</sup>  
Emily Stone<sup>'18</sup>  
Nicholas Wong<sup>'18</sup>

Denis Wong & Associates Scholarship  
Katia Barricklow  
Skylerann Gorgonio-Wong<sup>'16</sup>  
Tyler Mejia<sup>'18</sup>  
Richard Rista  
Kamalei Simon<sup>'17</sup>

Desha-Mulholland Scholarship  
Kalani Gregory<sup>'18</sup>  
Keala Lyons<sup>'18</sup>  
Makenna Mahuna<sup>'18</sup>  
Mina Mamoe<sup>'18</sup>  
Lexus Olaiivar-Mack<sup>'18</sup>

Dolly and Ross Wert Named Endowment  
Fund  
Keola Ching

Dorothy Martin Scholarship  
Rachel Ho<sup>'18</sup>

Douglas K.K. Chung Memorial Scholarship  
Kahiau Cockett-Nagamine  
Kanoë Shannon

Dr. Lori Ann Kim Scholarship  
Kiera Javillonar<sup>'17</sup>

Dr. Pauline Frederick Scholarship  
Tyler Mejia<sup>'18</sup>

Dwayne "Nakila" Steele Scholarship  
Jasmine Casey<sup>'17</sup>

Edward Lapsley Ho'opa'a Mau Scholarship  
Nokeakua Nakachi-Isaacs<sup>'18</sup>

Edwin Mahiai Copp Beamer Scholarship  
Summer Derrickson

Edwin P. Murray Scholarship  
Joseph Lindsey<sup>'18</sup>

Eli D. Panee Sr. and Aileen E. Panee I Mua  
Scholarship  
Tanner Hoke

Elizabeth Ku'ulei Bell Moloka'i Education  
Scholarship  
Royden Abafo  
Kiloaulani Kaawa-Gonzales

Flik Independent Schools Dining  
Scholarship  
La'akea Dedrick<sup>'18</sup>  
Kahuakaihele Tilton<sup>'18</sup>

Francillia Stillwell Sportsmanship  
Scholarship  
Luana Low<sup>'18</sup>

Frank & Ruth Midkiff Scholarship  
Diamond Carriaga<sup>'18</sup>  
Dylan Falces<sup>'18</sup>  
Kaysie Ho<sup>'18</sup>  
Riley Nozoe<sup>'18</sup>  
Jacob Perry<sup>'18</sup>  
Brendan Urayanza<sup>'18</sup>

Gail and Allan Fujimoto Scholarship  
Tazman Shim

George Hi'ilani Mills Scholarship  
Kayla Chee  
Kuuleihua funn  
Brandi-Lee Gonzales  
Liliuokalani Hiraide<sup>'09</sup>  
Brandon Ing<sup>'08</sup>  
Chanel Paresa<sup>'05</sup>  
Jaime Wong<sup>'11</sup>

George T. Kanalu Young Memorial  
Scholarship  
Billie-Ann Bruce

Gladys E. and Clifford T.F. Chun Scholarship  
Leina Panui<sup>'17</sup>

Gladys Kamakakūokalani 'Ainoa Brandt  
Scholarship  
Gregory Gushiken<sup>'15</sup>  
Zellie Kamahele  
Alana Kanahele  
Kelly Martin-Young  
Daniel Pavao  
Koa Rodrigues<sup>'12</sup>  
John Villiarimo

Goldman Sachs / Matsuo Takabuki  
Commemorative Scholarship  
Lane Opulauoho  
Tai Pa  
Alana Song<sup>'11</sup>  
Jared Serrao

Harold Turney & Dorothy Gillett Memorial  
Scholarship  
Kealiiokalani Kalima<sup>'18</sup>  
Sabrina Wong<sup>'18</sup>

Hawai'i Lodging & Tourism Association Don  
Ho Legacy Named Endowment  
Damien Stack<sup>'18</sup>  
Camryn Chinen<sup>'17</sup>  
Lia Ikeda<sup>'16</sup>

Helen Desha Beamer Scholarship  
Kona Abergas<sup>'18</sup>

Henry Laumaewa & Clara Kapeka Kanamu  
Memorial Named Endowment  
Keola Ching

Henry Lee Scholarship  
Jacob Thompson<sup>'18</sup>

Herbert Kealoa Keppeler Scholarship  
Jonah Ah Yat<sup>'18</sup>

Holomua Scholarship  
Hualalai Ahakuelo-Kepa

Homer David Kahilialau and Thelma  
Mabara Burge, Sr. Scholarship  
Alexander Guerrero  
Asia Kimura<sup>'18</sup>

Ho'omāka'ika'i Named Endowment Fund  
Pohaiikananikamahina Patterson<sup>'07</sup>

I Mua Mālama JROTC Ka'awaloa Takemoto  
Scholarship  
Dennis Daquioag

Inspirational Educator Scholarship  
Rebecca Kiili  
Kelly Martin-Young  
Kyle Nakatsuka<sup>'11</sup>  
John Villiarimo

Irmgard Farden Aluli Scholarship  
Ashton Mayo<sup>'15</sup>

Isaac and Mary Harbottle Scholarship  
Kristal Brown

Iwalani Carpenter Sowa Scholarship  
Legran Akana

Jalene Kanani Bell 'Ohana Scholarship  
Kendrick Nunes

James Bacon Little Bacon Urban Achievers  
Scholarship  
Asher Robertson

Jared Keanu Sylva Alvarez Named  
Endowment Fund  
Micah Au-Haupt<sup>'18</sup>

Johansen 'Ohana Scholarship  
Koa Rodrigues<sup>'12</sup>

John A. and Georgia J. Meyer Scholarship  
Natalie-Ann Clevenger<sup>'18</sup>  
Hoolakahaku Hokoana<sup>'18</sup>  
Jade Ishii  
Dylan Marn<sup>'18</sup>  
Keoni Yamanouchi<sup>'18</sup>

John and Reiko Kuga Phillip Scholarship  
Evyvyn-Bree Helekahi-Kaiwi

Johnny Pineapple Scholarship  
Kiana Davis<sup>'17</sup>  
Piikea Lopes<sup>'18</sup>

Joseph A. Sowa Scholarship  
Konapilihi Andres  
Stephanie Fox<sup>'11</sup>  
Lilinoe Kekaula-Van Gieson

Joseph David Ahuna Scholarship  
Kahula Coleman  
Lehualani Keka

Joseph Nāwahī Scholarship  
William Crowell  
Gregory Gushiken<sup>'15</sup>  
Tarita Keohokalole-Look<sup>'15</sup>  
Kelly Martin-Young

Ka 'Ōlelo Hawai'i o Kamehameha  
Scholarship  
Piikea Lopes<sup>'18</sup>

Ka Papa o Kanaono-Kumaono Class of 66  
Scholarship  
Imaikalani Chock<sup>'97</sup>

Kahalekui'inaihe Scholarship  
Kalei Greeley

Kalino Foundation Merit-Based  
Scholarship  
Christian Tamashiro<sup>'16</sup>  
Keahilele Reyes

Kamehameha Schools 1962 Class of  
Scholarship  
Brianne Richter  
Kekoa Taparra<sup>'08</sup>

Kamehameha Schools Alumni Association  
– Maui Region Scholarship  
Ariana Lopes-Martinez

Kamehameha Schools Alumni Association  
– O'ahu Region Scholarship  
Keni Reid<sup>'15</sup>  
Jaime Wong<sup>'11</sup>  
Brandon Ing<sup>'08</sup>  
Bianca Paishon<sup>'01</sup>

Kamehameha Schools Alumni Association  
West Hawai'i Region Scholarship  
Tayana Cardoza

Kamehameha Schools Association of Kaua'i  
Scholarship  
Brooke Frasco<sup>'18</sup>  
Tehani-Li Johnson<sup>'18</sup>  
Allysa Kauahi<sup>'18</sup>  
Taelee Kimura<sup>'18</sup>  
Kallen Kobayashi<sup>'18</sup>  
Taelor-Syara Sagucio<sup>'18</sup>  
Conner Garcia<sup>'18</sup>  
Joseph Lindsey<sup>'18</sup>  
Ivan Trugillo<sup>'18</sup>  
Thomas Yam<sup>'18</sup>

Kamehameha Schools Association of Maui  
Scholarship  
Tikki Bisbee  
Kealahoopoleimaile Cabanilla<sup>'18</sup>  
Jada Chang  
Kameaiomakamae Drayer-Hoopii<sup>'17</sup>  
Kaitlyn Evans<sup>'17</sup>  
Trisha Nobriga  
Taysia Pimentel  
Mical Ventura-Estrella<sup>'15</sup>  
Brody Yamada

Kamehameha Schools Association of  
Teachers and Parents Moloka'i "Elua"  
Scholarship  
Yasemin Soares

Kamehameha Schools Class of 1950  
Scholarship  
John Aiwohi

Kamehameha Schools Class of 1952 "Nā  
Hoaloha O Kamehameha" Scholarship  
Kainoa Broad  
Kitana Padilla<sup>'18</sup>

Kamehameha Schools Class of 1954 Na  
Kanalimakumaha Scholarship  
Briggs Agu  
Jared Miyamoto

Kamehameha Schools Class of 1956  
Scholarship  
Shane Campos  
Kepola Ishikawa<sup>'18</sup>

Kamehameha Schools Class of 1957  
Scholarship  
Micah Imakyure<sup>'18</sup>  
Leihalia Panui<sup>'18</sup>

Kamehameha Schools Class of 1958 Na  
Mea Waiwai a Pauhi Scholarship  
Aimee Paahao

Kamehameha Schools Class of 1960  
Scholarship  
John Aiwohi  
Taneesha Asing  
Kekoa Taparra<sup>'08</sup>

Kamehameha Schools Class of 1961  
Scholarship  
Shaylynn Matayoshi<sup>'18</sup>  
Isaiah Naauao-Asing  
Lia Wengler<sup>'18</sup>

Kamehameha Schools Class of 1963  
Scholarship  
Kiloaulani Kaawa-Gonzales  
Zellie Kamahele

Kamehameha Schools Class of 1967 Ka Lei  
O Kaiona Scholarship  
Alexander Guerrero  
Chelsea Yin

**Kamehameha Schools Class of 1968 “Ka Poli O Kaiona” Scholarship**

Kaluhikauahemakanamaikalani

Kaapana<sup>'16</sup>

Lauren Mau<sup>'08</sup>

**Kamehameha Schools Class of 1970 Scholarship**

Saralyn Campos

Kaitlyn Evans<sup>'17</sup>

Briley Hanohano

Kawainohiaakalani Navares

Stanford Puahi

Asher Robertson

**Kamehameha Schools Class of 1971 “Get Chance” Scholarship**

Blasea Balancio-Sadamaru

**Kamehameha Schools Class of 1972 Scholarship**

Jayde Vellalos

**Kamehameha Schools Class of 1973 “Proud to be ‘73” Scholarship**

Ashley-Ann Kruger

Tiare-Jennings Vaughan-Darval<sup>'17</sup>

Kyla Zimmermann

**Kamehameha Schools Class of 1974 Scholarship**

Keahinuinakeakua Johnson

Ciana Rivera

Hoku Tobin

**Kamehameha Schools Class of 1979 Ho’okupono Scholarship**

Lamont Octavio

**Kamehameha Schools Class of 1980 Scholarship**

Kira Rapozo

**Kamehameha Schools Class of 1983 Scholarship**

Amanda Mundon

**Kamehameha Schools Class of 1993 Na Lei Kukui Scholarship**

Chandel Pule

**Kamehameha Schools Class of 1997 Scholarship**

Mark Liberato<sup>'18</sup>

**Kamehameha Schools Class of 2001 Scholarship**

Kirsten Freeman

Christina Kaleiwahea

**Kamehameha Schools Class of 2005 Scholarship**

Desiree Naluai

**Kamehameha Schools Hawai’i - Parent Teacher Organization Scholarship**

Austin Araki<sup>'18</sup>

Diamond Carriaga<sup>'18</sup>

Centrie Carter<sup>'18</sup>

Leiana Clark<sup>'18</sup>

Nicholas Godoy<sup>'18</sup>

Hevanilea Haunga<sup>'18</sup>

Justyce Ishii<sup>'18</sup>

Kepola Ishikawa<sup>'18</sup>

Alexia Iwamoto<sup>'18</sup>

Brooks Kaniho<sup>'18</sup>

Kailikea Kekuawela<sup>'18</sup>

Justin Kenoi<sup>'18</sup>

Kylee Kubojiri<sup>'18</sup>

Ethan Lee<sup>'18</sup>

Ayston Motta<sup>'18</sup>

Isaiah Nakoa-Oness<sup>'18</sup>

Samantha Rapoza<sup>'18</sup>

Lahela Rosario<sup>'18</sup>

Damien Stack<sup>'18</sup>

Taylor-James Sullivan<sup>'18</sup>

Rachel Tanaka<sup>'18</sup>

Chalet Tauati<sup>'18</sup>

Kiani Troy<sup>'18</sup>

Lia Wengler<sup>'18</sup>

Hiilei Wong Yuen<sup>'18</sup>

**Kamehameha Schools Kapālama Association of Teachers and Parents Ho’ihi Aku, Ho’ihi Mai Scholarship**

Daymien Bunao<sup>'18</sup>

Brailyn Marie Oili<sup>'18</sup>

Kalyn Pimental<sup>'18</sup>

Tannor Tollefsen-Saio<sup>'18</sup>

**Kamehameha Schools Kapālama Class of 2006 Named Endowment Fund**

Tiana Brede<sup>'09</sup>

**Kamehameha Schools Maui Parent Teacher Student Organization ‘A’apueo Scholarship**

Chenoa Aina<sup>'18</sup>

Nevan Watanabe<sup>'17</sup>

Kamaile Aipa<sup>'17</sup>

Liliuokalani Hiraide<sup>'09</sup>

Jaye Orikasa<sup>'15</sup>

Koa Rodrigues<sup>'12</sup>

**Kamehameha Schools Nā Hoaloha Class of 1986 Named Endowment Fund**

Kyana Nagasako<sup>'18</sup>

**Kamehameha Schools Social Studies Faculty Grant**

Gaby Yohana Shim

**Keola & Kapono Beamer Scholarship**

Elia Akaka<sup>'18</sup>

Kealiioakalani Kalima<sup>'18</sup>

**KGMB/KHON Video Production Scholarship**

Daymien Bunao<sup>'18</sup>

Kaili Ryann Helekahi-Fuata<sup>'18</sup>

**Kunuiakea Scholarship**

Malia Adams

Abraham Alama

Devin Barricklow

Drew David

Makamae Kakalia<sup>'16</sup>

Makenna Mahuna<sup>'18</sup>

Quinn Shiraiishi<sup>'17</sup>

Kahikinaaloha Wise

**Lance (KS '83) & Andrea Hussey (KS '83) Leong Scholarship**

Christina Kaleiwahea

**Lee Ann DeLima Scholarship**

Tyson Hauapu<sup>'18</sup>

Kayla Tuitele<sup>'18</sup>

**Lena Kaulumau Machado Haku Mele Fund**

Elia Akaka<sup>'18</sup>

Sabrina Wong<sup>'18</sup>

**Lokomaika’i Scholarship**

Kaeo Kruse<sup>'16</sup>

**Makaloa Scholarship**

Kaile Apana

Bronson Bartolome

Kaylee Cambra<sup>'18</sup>

Kahiau Cockett-Nagamine

Kailee Cortez

Shandon Ehia

Anolani Graham

Malia Guerrero

Sharae Hawelu

Marisa Hayase

Slater Hobbs

Keolani Kahale-Lua<sup>'17</sup>

Tiani Kaneakua

Joseph Kidd

Zoe Leonard<sup>'15</sup>

Rachel Paresa  
 Roseline Peneku  
 Tehane Reynolds  
 Ambrosia Saulibio Kau'i<sup>'05</sup>  
 Robert Selfaison  
 Andraliene Souza-Tai  
 Chalet Tauati<sup>'18</sup>  
 Kylie Vasconcellos<sup>'18</sup>  
 Kaipoleimanu Wahinepio<sup>'11</sup>  
 Noah Wengler<sup>'17</sup>  
 Kekailani Wong Yuen<sup>'16</sup>  
 Keolamau Yee

#### Mary Atherton Richards Scholarship

Chenoa Aina<sup>'18</sup>  
 Trinity Alameda<sup>'18</sup>  
 Ke'alaokapuamakamae Aquino<sup>'18</sup>  
 Aliah Ayau<sup>'18</sup>  
 Kaylee Cambra<sup>'18</sup>  
 Karlee Chong Kee<sup>'18</sup>  
 Leiana Clark<sup>'18</sup>  
 Danielle Daligdig<sup>'18</sup>  
 Laleanani Drumright<sup>'18</sup>  
 Sadie Ednie<sup>'18</sup>  
 Kimani Fernandez-Roy<sup>'18</sup>  
 Lexi Figueroa<sup>'18</sup>  
 Lily Gavagan<sup>'18</sup>  
 Sierra Gleason<sup>'18</sup>  
 Anne-Marie Greig<sup>'18</sup>  
 Hevanilea Haunga<sup>'18</sup>  
 Kepola Ishikawa<sup>'18</sup>  
 Cheridean Kaaialii<sup>'18</sup>  
 Rebecca Kaleleiki<sup>'18</sup>  
 Zoey Kaneakua<sup>'18</sup>  
 Kylee Kubojiri<sup>'18</sup>  
 Mina Mamoe<sup>'18</sup>  
 Huali McCollough<sup>'18</sup>  
 Kaya Melchor<sup>'18</sup>  
 Samantha Rapoza<sup>'18</sup>  
 Brianna Reformina<sup>'18</sup>  
 Trinity Shiroma<sup>'18</sup>  
 Emily Stone<sup>'18</sup>  
 Rachel Tanaka<sup>'18</sup>  
 Kapri Tulang-De Silva<sup>'18</sup>

#### Maui County Farm Bureau Scholarship

Pomaikai Cathcart<sup>'15</sup>

#### Michael "Mikey" Miyake Scholarship

Tatum Kauka<sup>'18</sup>  
 Riley Nozoe<sup>'18</sup>

#### Mr. John Riggle Scholarship

Kamuela Akeo

#### Myron & Laura Thompson Scholarship

Cheyenne Jael Natividad-Parraga<sup>'17</sup>  
 Tiare-Jennings Vaughan-Darval<sup>'17</sup>

#### Nā Pua Mae'ole o Kamehameha Class of 1953 Scholarship

Jayna-Lyn Akita

#### Nanea Scholarship

Aaron Castillo<sup>'96</sup>  
 Kuuleihua Funn  
 Chas Huston<sup>'15</sup>  
 Halenakekanakalawaiamiloilii Kapuni-Reynolds  
 Shariah Mae Olomua<sup>'17</sup>  
 Kanani Yockman

#### Native Hawaiian Chamber of Commerce Scholarship

Xandria Akau<sup>'15</sup>  
 Tiana Brede<sup>'09</sup>  
 Juvette Kahawaii  
 Christina Kaleiwahea  
 Tiare Kaopua  
 Cayla Moore<sup>'15</sup>  
 Lane Opulauoho  
 Tai Pa  
 Jared Serrao  
 Alana Song<sup>'11</sup>

#### Pa'i'ea Kāne/Wahine Scholarship

Austin Araki<sup>'18</sup>  
 Taylor-James Sullivan<sup>'18</sup>

#### Patrick L. Hiram - John S. Freitas Scholarship

Kendrick Nunes

#### Pauahi Scholars

Gideon Aiwohi<sup>'18</sup>  
 Faith Blalock<sup>'18</sup>  
 Kealahooipoleimaile Cabanilla<sup>'18</sup>  
 Logan Cabanilla-Aricayos<sup>'18</sup>  
 Tiari Faagata<sup>'18</sup>  
 Cayli Farias<sup>'18</sup>  
 Sierra Gleason<sup>'18</sup>  
 Ariana Hurdle<sup>'18</sup>  
 Daniel Kapua<sup>'18</sup>  
 Michelle Murata<sup>'18</sup>  
 Jaelynn Nobriga<sup>'18</sup>

Hera Salmeron<sup>'18</sup>  
 Kainoakeola Sanchez<sup>'18</sup>  
 Tayler Siminski<sup>'18</sup>  
 Kayla Tuitele<sup>'18</sup>  
 Chloe Waters<sup>'18</sup>  
 Hunter Worth<sup>'18</sup>

#### Pauahi Scholars - Liko Lehua

Kailey Aiona<sup>'18</sup>  
 Justyce Ishii<sup>'18</sup>

#### Pauahi Scholarship

Bruce Balisbisana  
 Nicole Ishihara

#### Paul Pua'a 'Ohana, Paul Moses Murray & Malia Murray Grant

Ema Kaka  
 Lamont Octavio

#### Pono & Louise Beamer Scholarship

Kona Abergas<sup>'18</sup>  
 Sabrina Wong<sup>'18</sup>

#### Pop Diamond Scholarship

Karenna-Rose Nicely<sup>'18</sup>

#### Randy Wayne Ahuna Scholarship

Nalehuaopuna Donlin

#### Rebecca Lamahilani Haalou Medeiros Scholarship

Jennifer Kaneakalau

#### Reuben Lee Kwai Brandt Scholarship

Nicole Koochi

#### Richard Lyman, Jr. Memorial Grant

Quentin Choy<sup>'18</sup>

#### Roy L. Cachola Scholarship

Kiele Carpio

#### Sarah Keli'ilolena Lum Konia Nakoa Scholarship

Kinohi Neves

#### Stanley & Janet Zisk Scholarship

Trisha Nobriga  
 Kira Rapozo

#### Stanley and Besse Fortuna Memorial Scholarship

Ethan Castillo<sup>'18</sup>



**T.C. Yim Named Endowment**

Brandon Najarian

**Tauati 'Ohana Scholarship**

Drew Arruda-Akine<sup>'18</sup>

Grayson Cosier<sup>'18</sup>

Cayli Farias<sup>'18</sup>

**Taylor Nanea Pangan-Fergerstrom Memorial Scholarship**

Nathan Horner<sup>'18</sup>

**Tennyson Keolalani Tom Scholarship**

Jaelyn Domingo<sup>'18</sup>

Ty Williams<sup>'18</sup>

**The Hawai'i Island New Knowledge Fund - THINK**

Elijah Ching<sup>'18</sup>

Imaikalani Chock<sup>'97</sup>

Hiilei Ishii-Chaves

Hansel Kaaumoana<sup>'17</sup>

Ihilani Kamau<sup>'18</sup>

Katelynn Kubo

Ashley McDaniel

Dana Neal

Kaelia Lynn Saniatan

Brooke Zarriello

**Theodore Richards Scholarship**

Makana Larger<sup>'18</sup>

Bailey Ota<sup>'18</sup>

Damien Stack<sup>'18</sup>

**Theodore Vierra Scholarship**

Aizea Ranon<sup>'18</sup>

**Trudi and Hiram de Fries Educational Scholarship**

Tazman Shim

**U'ilani Stender Scholarship**

Kenneth Ho

Kaluhikauahemakanamaikalani

Kaapana<sup>'16</sup>

Tarita Keohokalole-Look<sup>'15</sup>

Chanel Paresa<sup>'05</sup>

Trinity Shiroma

**Ula Baker Sheecha Scholarship**

Anuheha Nihipali<sup>'18</sup>

**Violet K. '32 & Henry T. Hughes, Jr. Scholarship**

Elisa Tsukayama<sup>'08</sup>

**Waipa Nishimura Memorial Scholarship**

Vance Miyamoto<sup>'18</sup>

Lauren Trujillo<sup>'18</sup>

**Wallace & Barbara Kaawaloa Scholarship**

Kanoa Ayau<sup>'18</sup>

Sydnee'O Valdez<sup>'18</sup>

**Warren Nakupuna Ah Loo Memorial Scholarship**

Jade Ishii

**William K. and Julia T. Kapololu Named Endowment**

Rachelle Haumea<sup>'91</sup>

**William N. Bill Villa KS '71 Scholarship**

Kaitlin Hao-Magno<sup>'16</sup>

**William S. Richardson Commemorative Scholarship**

Tate Castillo<sup>'14</sup>

William Crowell

Tarita Keohokalole-Look<sup>'15</sup>

**Winona Beamer Scholarship**

Piikea Lopes<sup>'18</sup>

**Yin Ohana Named Endowment**

Lesley Iaukea

**Zillah Young Memorial Scholarship**

Kona Abergas<sup>'18</sup>

# Ka Hā'awi

## Why we give

### CARIANN AH LOO KSK'91

WARREN NAKUPUNA AH LOO MEMORIAL SCHOLARSHIP  
NAKUPUNA FOUNDATION

“We have a responsibility to continue Pauahi’s legacy of service and uplift our community. If you can be part of the solution and affect change, why wouldn’t you give back? Together, we can accomplish extraordinary things.”



**CARIANN AH LOO IS LIVING THE DREAM**, helping to realize her father’s vision of providing educational opportunities for Native Hawaiians, uplifting the lāhui and making even more dreams come true.

Ah Loo said that after her father, an industrial engineer, retired from a career with the Department of Defense, he had two aspirations: to run a successful and thriving Native Hawaiian owned company; and to establish a foundation that would provide scholarships to students of Native Hawaiian ancestry who demonstrated academic excellence and an interest in contributing to the betterment of the Hawaiian community.

Sure enough, Warren N. Ah Loo KSK'65 opened his own company, Na Ali'i

Consulting & Sales, but passed away unexpectedly before he was able to see his second vision come to fruition.

“My ‘ohana decided that creating a scholarship in my dad’s name would be a fitting way to honor a man who valued education and believed education was the way to elevate the Hawaiian community. We partnered with Pauahi Foundation in 2016 and established The Warren Nakupuna Ah Loo Memorial Scholarship,” Ah Loo said.

Since then, the Ah Loo ‘ohana has created the Nakupuna Foundation, whose mission is to support the economic advancement of Native Hawaiians through educational programs and opportunities, specifically focusing on areas of science, technology, engineering, and math.

“Selecting the first recipient of the scholarship was truly a momentous event for my ‘ohana because it solidified my dad’s legacy,” Ah Loo said. “It is rewarding to know that you can make a difference in someone’s life.

“Several generations of my immediate and extended ‘ohana are beneficiaries of Pauahi’s generosity. For those of us who had the privilege of attending Kamehameha Schools, we were given the opportunity to build strong foundations that have shaped our lives.

“If I could mahalo Pauahi, I would thank her for the opportunities her legacy afforded us. And I would also tell her that I hope that we have lived up to her expectations of being good and industrious men and women.”

*Give with Pauahi*

**LET US COME TOGETHER AND TRANSFORM LIVES IN OUR HAWAIIAN COMMUNITY!** Help us continue Pauahi’s legacy of giving by volunteering time and/or making a donation to the Pauahi Foundation to help uplift the Hawaiian community.

LEARN MORE AT [PAUHI.ORG](http://PAUHI.ORG)



# Manawale‘a



## ALVIN PAU'OLE KSK'56

USS KAMEHAMEHA SCHOLARSHIP

**ALVIN PAU'OLE** has accomplished a lot in his life. He was the first minority in the nation to be selected to the Navy's Nuclear Power Training Program, the only Native Hawaiian to serve as chief engineer of a nuclear reactor plant, and the only Hawaiian to command a fast attack nuclear submarine and a squadron of nuclear submarines. The 30-year veteran credits his achievements to his upbringing on Kaua'i combined with his educational experience at Kamehameha Schools.

After retiring in 1990 as a captain with numerous medals, Pau'ole went on to a successful post-military career in nuclear engineering. Being a leader in his field fueled his desire to create opportunities for Native Hawaiians. To that end,

Pau'ole cofounded the Pacific American Foundation which offers culture- and place-based education to prepare young Hawaiians for careers in fields ranging from robotics to finance.

Recently, as a board member for the Pacific Fleet Submarine Memorial Association (PFSMA), he facilitated a partnership between PFSMA and the Pauahi Foundation to create the USS Kamehameha Scholarship for Native Hawaiians pursuing degrees in STEM or business-related fields.

Pau'ole said he gives with Pauahi because he wants to help more Native Hawaiians emerge as community leaders by giving them the gift of education, as knowledge is the backbone of leadership.

“I'm grateful for what Kamehameha Schools has done in preparing us to be successful beyond high school. I'd like to see many more Hawaiians achieve great things and maybe one day we'll even have a Hawaiian president of the United States.”

## JIM AND KIM SLAGEL

ODELL & HASTINGS SCHOLARSHIP FUND

“The students at Kamehameha Schools have the desire and passion to be leaders in the community. It's our jobs as teachers to provide that avenue for them.”

**KAMEHAMEHA SCHOOLS** Kapālama High School English kumu Jim Slagel and wife Kim — a former KSK math kumu — believe in the transformational power of community service. Together, they have inspired countless students to strive for excellence in the classroom as well as in their communities.

As student advisors, the Slagels helped create the Amnesty International Club, giving students an avenue to learn about and address local, national and world issues. They also helped establish KSK's Cat and Dog Huggers Club to care for the feral cat colony on campus and assist local animal shelters. The animal



lovers even brought their beloved basset hounds, Odell and Hastings, to school to launa with students and staff.

In 2015, the Slagels and the campus 'ohana mourned the unexpected passing of the dogs. At the suggestion of fellow

teachers Alohi Aea and Shari Chan, the Slagels established the Odell and Hastings Scholarship Fund for students who have demonstrated stellar community service with a focus on the environment and/or animals. With donations from students, faculty and family, the fund has grown and will be awarding its first scholarship in 2020.

It is through this scholarship and many other community service endeavors that the Slagels give with Pauahi. They do not give to receive credit or recognition, but to grow servant leaders to make the world a better place.

# ‘Ewalu Mo‘olelo, Ho‘okahi Po‘omana‘o

*Eight Stories, One Vision*



**MA KĒIA HŌ‘IKE KŪ MAKAHIKI**, ke ka‘ana ‘ia nei he ‘ewalu mau mo‘olelo e wehewehe ana i ke alu like ‘ana o Ke Kula ‘O Kamehameha me nā kaiaulu a me nā ‘ohana no ka ho‘oikaika ‘ana i ka ‘ōnaehana ho‘ona‘auao e ho‘omakakoho ana i ka pono o nā keiki, ‘o ia ka mea nui. Ke no‘ono‘o i holomua o 2018, ‘upu a‘ela ka mana‘o o ka ‘ōlelo no‘eau: E kanu mea‘ai o nānā keiki i kā ha‘i. E pani ‘ia ana kēia hō‘ike me ka mana‘olana ē, ua ‘ikea ka waiwai o nā mana‘o, nā hana, a me ka ho‘ohakuhia e mālama ‘ia nei ma kahi pae a kahi pae o ka pae ‘aina. E lilo ia i mea e ola i nā ‘ōpio o ka lāhui.

**THE EIGHT STORIES** featured in this year’s annual report showcase the ways in which Kamehameha Schools, in partnership with community and ‘ohana, works to strengthen an educational system that places keiki at the center. As we reflect on the many accomplishments of FY 2018, we hear echoes of the following ‘ōlelo no‘eau: E kanu mea ‘ai o nānā keiki i kā ha‘i. Plant edible food plants lest your children look with longing at someone else’s. We close this year’s annual report in hopes that it has captured the richness of ideas, efforts, and innovations presently under cultivation across the pae ‘aina. May they nourish the young minds of the lāhui.



PRODUCED + DESIGNED BY DTL



KAMEHAMEHA SCHOOLS®

