





Hō'ike Kū Makahiki o Ke Kula 'O Kamehameha 2021

2021 KAMEHAMEHA SCHOOLS ANNUAL REPORT
JULY 1, 2020 - JUNE 30, 2021

5
Welina

WORLD-CLASS EDUCATION

6
Navigating the COVID-19 pandemic
Safety remains a top priority

7
Let's get digital
Enhancing a world-class learning experience

RESILIENT COMMUNITIES

8
Connecting West O'ahu 'ohana to high-speed internet
Working together for digital equity

9
Uniting a community
The Kalanihookaha Community Learning Center provides lifelong learning opportunities for Native Hawaiians

GLOBALLY COMPETITIVE PERFORMANCE

10
Building communities for a better tomorrow
Continuing Ke Ali'i Pauahi's legacy by cultivating communities

11
Supporting our 'ohana
If businesses can survive, communities will thrive

RESOURCES & IMPACTS

13
Educational Spending

16
'Āina & Innovation

17
Endowment

PAUHI FOUNDATION

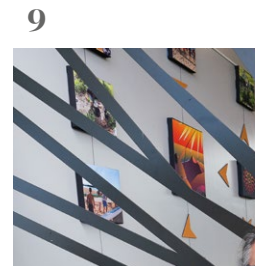
19
Foundation impact

20
Why we give

22
2020-2021 Donors

28
Imua nā haumāna
Scholarship recipient spotlight

30
2020-2021 Pauahi Foundation Scholarship Recipients



A large-scale mural of a person's face, rendered in various shades of blue and white, covers the wall. The person's face is the central focus, with detailed features like eyes, nose, and mouth. The background of the mural is a lighter, textured blue. In the foreground, a painter wearing a white shirt, khaki pants, a yellow safety harness, and a black face mask is standing on an orange scissor lift. The painter is holding a long-handled roller and is in the process of applying blue paint to the wall. The scene is set outdoors under a clear blue sky.

Hānai i ke keiki, ola ka lāhui

Nurture the child and the people thrive



Aloha mai kākou,

We are pleased to present to you our Kamehameha Schools annual report – Makawalu 2021.

In this report, you will have a chance to review our performance for the year – in the classroom, in our offices, on our ‘āina, and throughout our communities. We hope you will feel this has been a good year, as we have cared for and educated our keiki, grown our endowment, collaborated with partners, stewarded our ‘āina, innovated through new technologies and worked tirelessly to advance our lāhui.

As you read this report, you will also be able to experience this past year with us through our mo‘olelo. We have included some of the best stories. Stories about our hard-working staff, committed volunteers, loyal tenants, dedicated partners, collaborators and donors. You will also hear from our haumāna, alumni and emerging ‘ōiwi leaders who are guiding our lāhui into a brighter future.

Lastly, as you reflect with us on this past year, including the gauntlet of trials we have all experienced from a very long pandemic to political and economic instability, we think you will agree with us that that the inspiring and immortal words of Kamehameha ‘Ekahi have never rung more true for our people: “I mua e nā poki‘i a inu i ka wai ‘awa‘awa, ‘a‘ohe hope e ho‘i mai ai.”

On behalf of all of us at Kamehameha Schools, we mahalo each of you for your support, contributions and guidance throughout this past year. It continues to be our privilege and honor to serve you and your ‘ohana through the vision of our founder, Ke Ali‘i Bernice Pauahi Pākī Bishop.

I MUA KAMEHAMEHA!



ABOVE LEFT:

(From left) Kamehameha Schools trustees Lance Keawe Wilhelm KSK’83, Robert K.W.H. Nobriga KSK’91, Crystal Kauilani Rose KSK’75, Elliot Kawaiho‘olana Mills, and Micah Alika Kāne KSK’87

ABOVE RIGHT:

Livingston “Jack” Wong
Chief Executive Officer



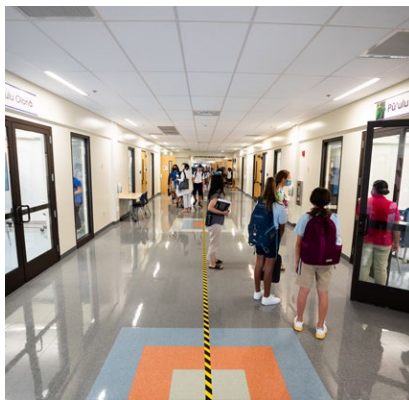
Navigating the COVID-19 pandemic

Safety remains a top priority

As the ongoing COVID-19 pandemic continues to affect life on and away from campuses and preschools, Kamehameha Schools remains committed to the safety and well-being of haumāna, staff and members of the KS 'ohana.

When it comes to safety, KS consistently meets or exceeds mitigation strategy guidelines provided by the Hawai'i State Department of Health as the organization is equipped to maintain safe in-person learning across the state.

KS manifests its care for every member of the school 'ohana by following data-proven strategies, including hosting vaccination events for students and staff; encouraging self-monitoring of health and caring for others; wearing masks correctly and consistently; practicing good hand hygiene, including the use of sanitizer; utilizing cohorts and "bubbles" to assist with identifying close contacts; improving ventilation systems and observing appropriate physical distancing; implementing voluntary testing programs; staying home when sick; monitoring internal and external conditions for community transmission; and cleaning and disinfecting multiple points throughout the day.





Let's get digital

Enhancing a world-class learning experience

Kamehameha Schools responded quickly to ensure the safety of haumāna and 'ohana by shifting to virtual classrooms as the COVID-19 pandemic began affecting schools and communities early in the spring of 2020. The leadership team recognized the need to modernize KS' approach to education by delivering a world-class experience through safe and engaging online offerings.

KS Digital became a gateway to an array of educational technology tools, accredited K-12 education and Hawaiian culture-based content for haumāna of all ages. The innovative hub empowers teachers and enriches student experiences, anytime and virtually anywhere.

KS leveraged its long-standing partnership with Arizona State University for access to proven learning management systems as well as the wealth of resources offered by ASU Prep Digital. KS Digital launched in August 2020, and it is being used at KS' three K-12 campuses and 29 preschools. Whether in the classroom for in-person instruction or distance learning when necessary, KS Digital ensures continuity across learning experiences.



Connecting West O'ahu 'ohana to high-speed internet

Working together for digital equity

Kamehameha Schools collaborated with Partners in Development Foundation and HawaiiKidsCAN to provide students and families with internet connectivity support to address disparities in broadband internet access amid the COVID-19 pandemic.

The initiative, "WiFi on Wheels," launched in September 2020 and provides students and their families at West O'ahu's Kamaile Academy Public Charter School and other members of the community with high-speed internet to support their distance learning needs.

KS Director of Community Engagement **Kalei Kailihiwa KSK'93** notes that the effort has also provided users with the opportunity to take care of telehealth and other social service appointments, as face-to-face contact has been reduced during the pandemic.

The WiFi on Wheels mobile connectivity hub features a router contributed by Cradlepoint and unlimited wireless data from AT&T at a radius of 100 to 200 feet, depending on the terrain of the area. HawaiiKidsCAN is working with additional community partners to roll out more vans to areas including downtown Honolulu, Maui, Moloka'i and Hawai'i Island.

Top left: WiFi on Wheels partners gathered for a vehicle demonstration, which included Kamaile Academy Principal Paul Kepka, Partners in Development Foundation Program Manager Terry Nakamura, PIDF Teaching Assistant Napualani Kealoha, HawaiiKidsCAN Executive Director David Miyashiro, and PIDF Teaching Assistant John Nihipali.

Top right: The WiFi on Wheels mobile connectivity unit features a high-speed internet router affixed to the top of a van which is deployed to various areas around the Wai'anae community assisting users with connectivity needs.

Uniting a community

The Kalanihookaha Community Learning Center provides lifelong learning opportunities for Native Hawaiians

In April 2021, Kamehameha Schools, its project partners and Wai‘anae Coast community members celebrated the opening of the new Kalanihookaha Community Learning Center (KCLC) in Nānākuli Village Center with a small blessing and open house.

Named for the professional legacy of Dr. Agnes Kalanihookaha Cope, known fondly by many as “Auntie Aggie” – a longtime Nānākuli resident and champion for Native Hawaiian health, education, culture and the arts – the new center serves as a place for gathering and learning for community residents and program partners alike.

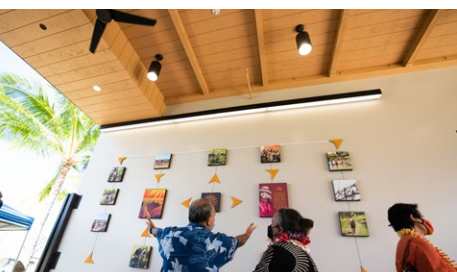
KCLC is positioned to support ‘āina-based programs, career development and training, and provide a home for lifelong learning opportunities for Native Hawaiians and those in the surrounding community. The vision for KCLC was made possible through vital partnerships with entities such as the State Department of Hawaiian Home Lands and the Nānākuli Hawaiian Homestead Community Association, and support from the Hawaiian Community Development Board.



Above: The \$10.9 million learning center broke ground in April 2019 and completed construction a year later but delayed opening and programming due to the COVID-19 pandemic. The resulting project is a single-story building that encompasses 6,828 square feet and includes a large multi-purpose room with flexible space, a covered lanai for indoor and outdoor use, a serving kitchen, a large pavilion and a pā or outdoor staging area.

Left: Fronting KCLC is a striking, life-sized humpback whale sculpture, Koholā Ola, which was brought to life by the many hands of Wai‘anae Moku keiki and community members under the guidance of artist and area resident Sooriya Kumar. The koholā symbolizes one of the highest, most sacred forms of Kanaloa and signifies knowledge, intelligence and deep connection.

The community is invited to visit and tour the facility. For more information, visit www.kalanihookaha.org, or contact KCLC at 843-9655.





Building communities for a better tomorrow

Continuing Ke Ali'i Pauahi's legacy by cultivating communities

As stewards of 'āina Pauahi and her legacy, Kamehameha Schools actively reinvests and manages its assets to ensure the vibrancy of the organization's mission in perpetuity.

To ensure a thriving lāhui, KS' real estate portfolio provides environments for housing development, career growth, food systems stability and cultural identity. These elements are critical to the success of learners and robust communities.

KS is in the early stages of developing the He'eia Plan, a vision and physical master plan and implementation strategy that will guide and prioritize KS' actions for the long-term future of its 507 acres of 'āina in Kāne'ohe, with a focus on 55 acres of commercial properties.

On June 2, 2021, the Hawai'i Community Development Authority unanimously approved a 10-year extension to KS' Kaiāulu 'o Kaka'ako Master Plan, which will allow additional affordable housing units to be built.

The Keauhou Bay Management Plan is a long-term management and land use plan that guides and prioritizes actions for the future planning, improvement, and operational use of approximately 32 acres of KS 'āina in the Keauhou Bay area on Hawai'i Island, as well as 22 acres leased to the Outrigger Kona Resort and Spa.

The Kapālama Kai Plan aligns commercial properties, educational outcomes and community building to direct a 20-year vision for this area. The use of KS' 105 acres of commercial 'āina in the Kapālama ahupua'a focuses on fostering a strong industrial business base, kama'āina housing and an integrated transit-oriented community.

Above: Artists Cory Taum KSK'08 and Kahiau Beamer KSK'06 partnered with Kamehameha Schools' Commercial Real Estate Division to honor the rich history of Kapālama with a mural inspired by the mo'olelo of Kamehameha 'Ekahi's efforts to restore lo'i in the ahupua'a after a period of war as a means to feed the people of O'ahu, and begin the unification of the Kingdom of Hawai'i.





Supporting our 'ohana

If businesses can survive, communities will thrive

With communities across the world facing uncertainty around the lengthy public health crisis and resulting economic fallout created by the spread of COVID-19, KS quickly adapted to respond to potential impacts felt by KS tenants and properties, as well as the local economy.

KS' Tenant Assistance Plan was developed to help local business tenants and lessees stabilize operations and survive.

Above: In partnership with Howard Hughes, Hawai'i Food & Wine Festival, Hawai'i Agricultural Foundation, and Ham Produce and Seafood, KS distributed food boxes with 35 pounds of produce and goods to 500-plus staff members from Our Kaka'ako and Ward Village tenant retailers.

Below center: Longtime Kamehameha Schools tenant Elvin's Bakery was one of over 100 tenants who received support through KS' rent relief program, which provided rent abatement and/or deferral to tenants facing economic hardship due to the pandemic. The rent relief allowed Elvin's to retain its employees during the state's mandatory shutdown of businesses.



Right: To boost tenant business while helping those impacted by COVID-19, KS teamed up with celebrity Kelly Hu KSK'86 for the "Buy One, Feed One Hawai'i" campaign. Also known as "BOFO," the campaign encourages individuals eating out to purchase a second meal for someone impacted by the pandemic.

Left: KS partnered with Jeff Gress (pictured) and Jasper Wong of POW!WOW! Hawai'i to create and display signage with positive messages at KS commercial properties on O'ahu and Hawai'i Island.





Resources & Impacts

JULY 1, 2020 THRU JUNE 30, 2021



Kamehameha Schools is a private charitable educational trust endowed by the will of Hawaiian princess, Bernice Pauahi Bishop (1831-1884), the great-granddaughter and last direct descendant of King Kamehameha I.

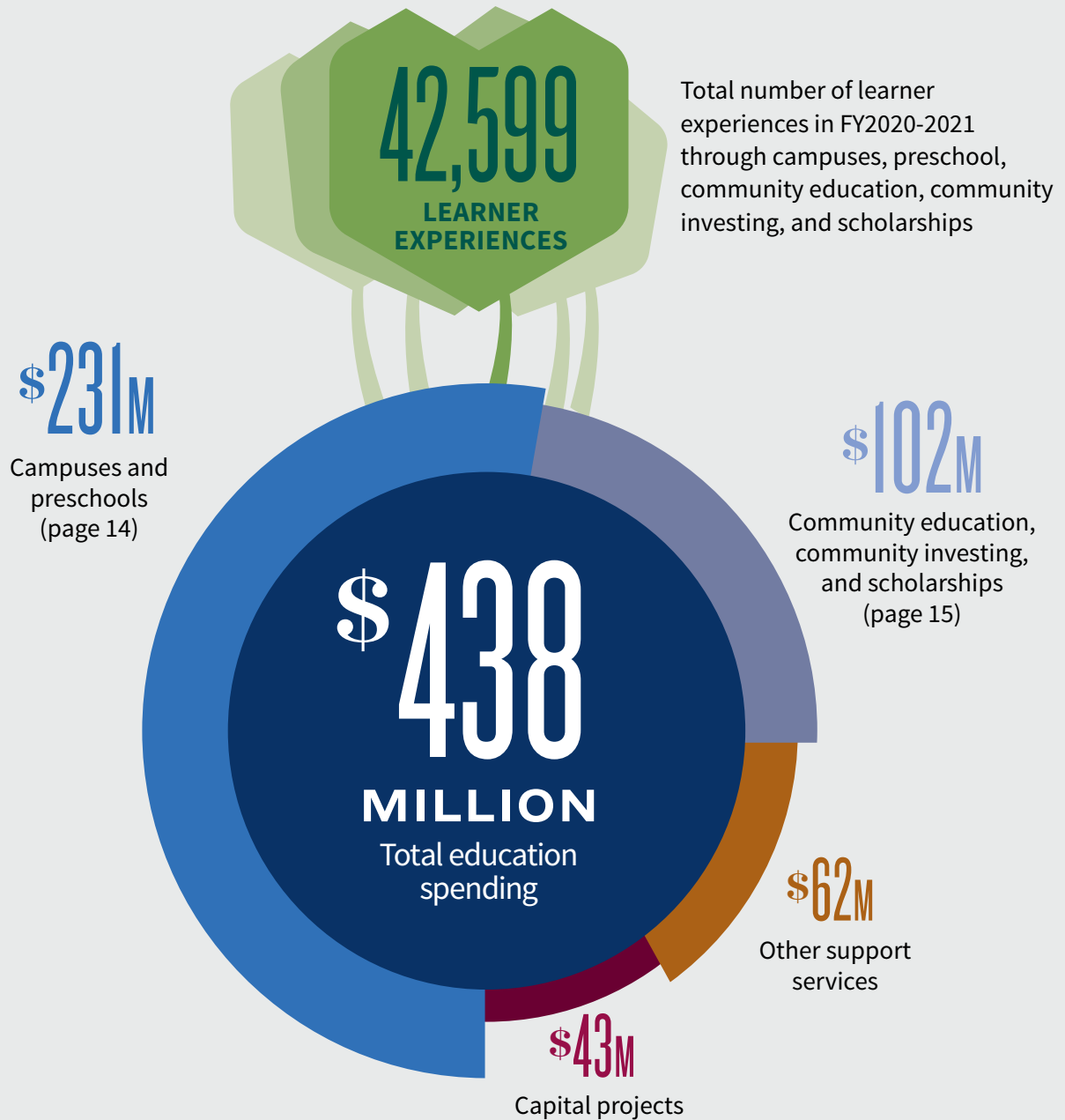
During her lifetime, Princess Pauahi witnessed the rapid decline of the Native Hawaiian population. She knew that education would be key to the survival of her people, and in an enduring act of aloha, she bequeathed to them a precious gift — 375,000 acres of ancestral lands of the royal Kamehameha family and instructions to her trustees that the “rest, residue and remainder of my estate” be used to establish the Kamehameha Schools.

Today, Ke Ali'i Pauahi's legacy continues to advance her desire to restore her people through education.



Educational Spending

During fiscal year 2020-2021, Kamehameha Schools spent \$438 million from its endowment on education, representing 3.8% of the trailing five-year average market value of the endowment for the year, also referred to as “spend rate.” KS targets a 4% spend rate to provide for stability and financial equilibrium over time. In close alignment with the policy, the average spend rate for the last five and 10 years was 3.8%.



2
KAUAI

11
O'AHU

= PRESCHOOLS

1
MOLOKA'I

3
MAUI

12
HAWAI'I

Preschools

29 Preschools
85 Classrooms statewide

1,403
LEARNERS
SERVED



\$39.4
MILLION
Spent on preschool
education

\$191.9
MILLION
Spent on K-12
learners on three
campuses

\$27.4
MILLION
Spent on
financial aid

5,454
LEARNERS
SERVED



Campuses

5,731
LEARNERS
SERVED

Kapālama Campus	3,181	Enrolled
	447	Graduated
Hawai'i Campus	1,176	Enrolled
	133	Graduated
Maui Campus	1,097	Enrolled
	117	Graduated

697
GRADUATES

Financial Aid

\$2.7M

\$24.7M

Preschools

K-12



Scholarships

4,246
LEARNERS
SERVED

PAUAHI KEIKI SCHOLARSHIPS

1,323
LEARNERS

were funded a total of
\$9.6 MILLION
to attend other private
preschools

KIPONA SCHOLARSHIPS

676
LEARNERS

were funded a total of
\$5.2 MILLION
to attend other private
K-12 schools

NĀ HO‘OKAMA A PAUAHI POST-HIGH SCHOLARSHIPS

1,976
LEARNERS

were funded a total of
\$11.0 MILLION
to attend college

\$28.2
MILLION
Scholarships
disbursed

\$32.9
MILLION
Disbursed

Community Investing

179 projects funded through
community investing efforts

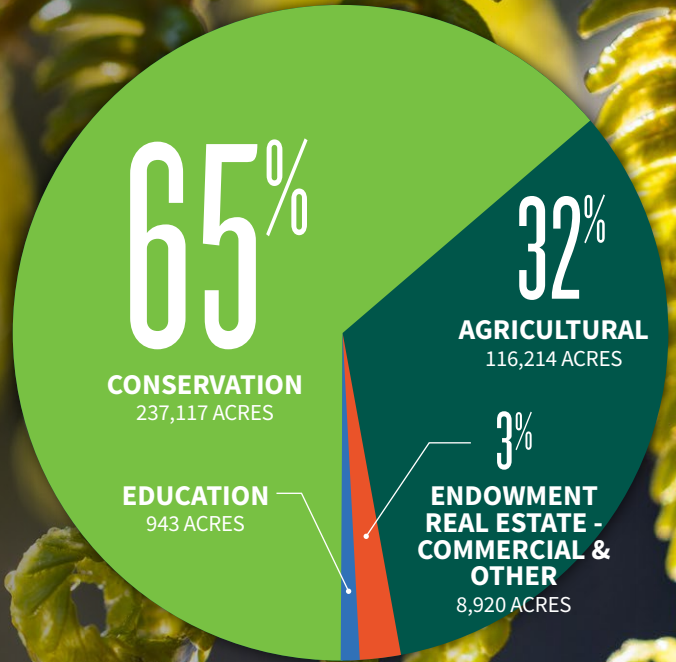
27,521
PARTICIPANTS
SERVED



'Āina

OUR LANDS, OUR KULEANA

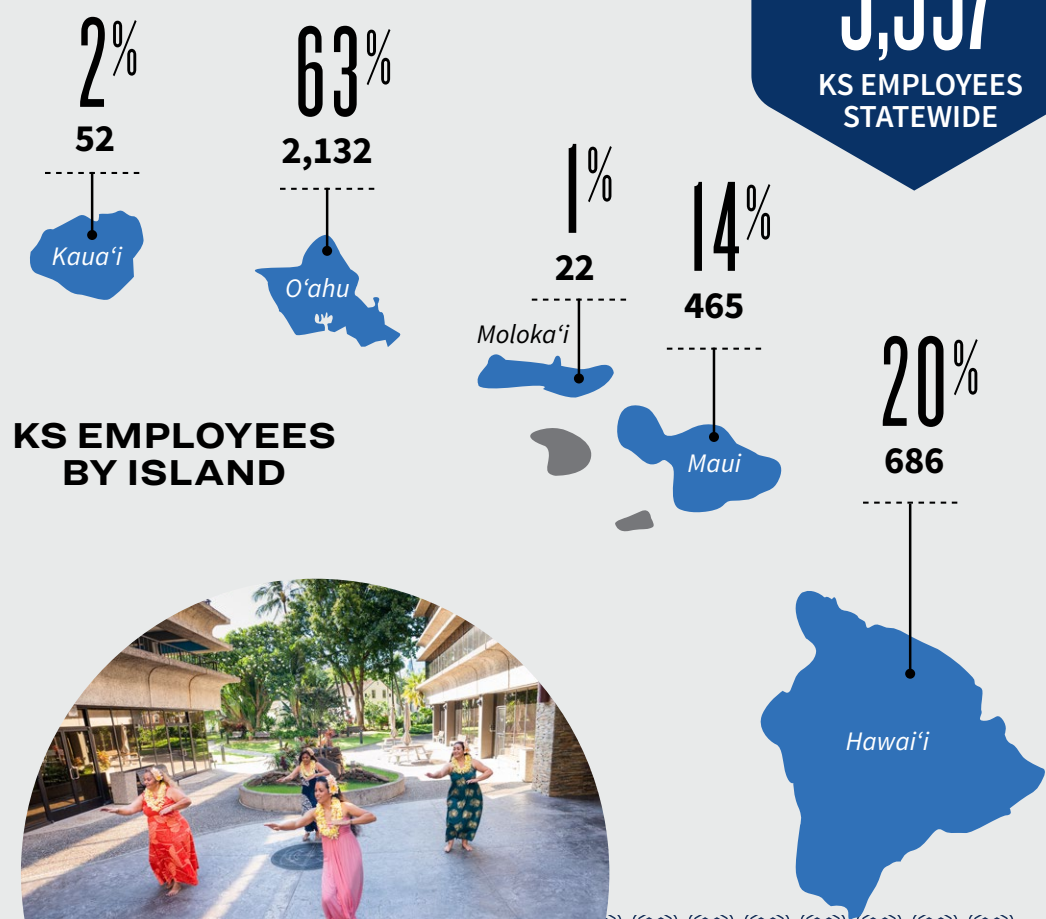
Endowment real estate lands make up 3 percent of total acreage (363,194 acres) belonging to Kamehameha Schools and is mostly commercial and residential. Agricultural and conservation lands comprise 97% and are primarily considered sustainability assets, not included in the endowment fund.



\$13.8
MILLION

Invested (net of agricultural rents) to steward agricultural and conservation lands and natural resources

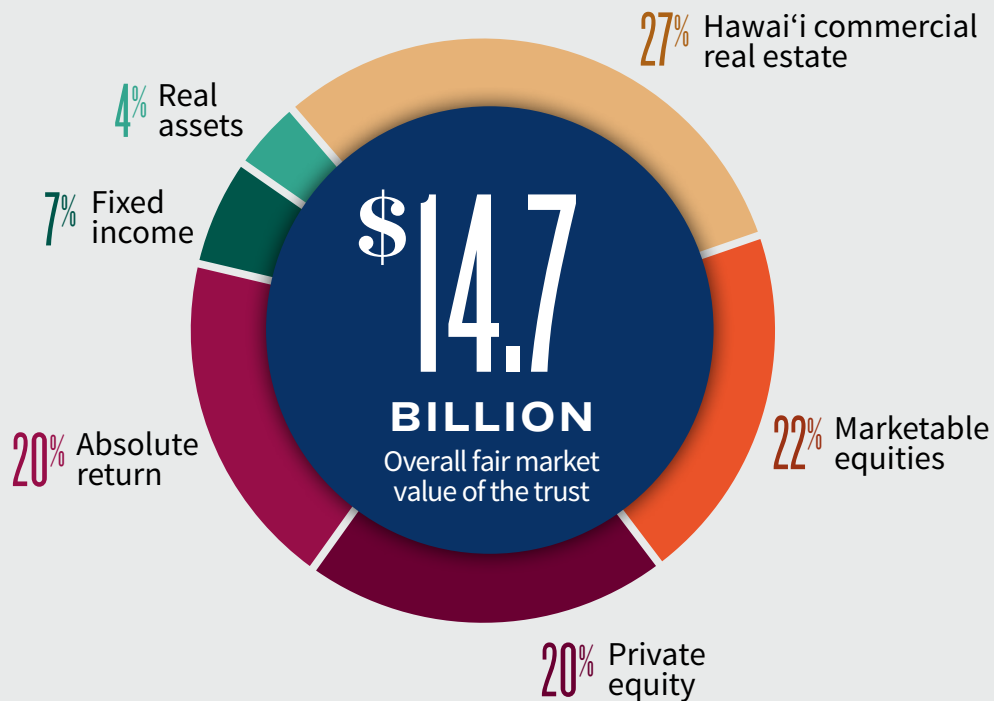
3,357
KS EMPLOYEES STATEWIDE



Endowment

KAMEHAMEHA SCHOOLS TRUST

Kamehameha Schools' mission is 98% supported by its endowment with three percent being supported by tuition, net of financial aid. The endowment was valued at \$14.7 billion as of June 30, 2021. A globally diversified financial assets portfolio of \$10.7 billion, and Hawai'i commercial real estate representing \$4.0 billion at fair market value comprise the endowment's value.



INVESTMENT RETURNS

The goal of Kamehameha Schools' endowment is to provide superior risk-adjusted long-term returns to support its mission in perpetuity. The 10-year return added value versus a policy-weighted average of market benchmarks and added value versus its CPI + 5% objective of 6.9%, an objective designed to provide for real growth and financial equilibrium.

	10 Years Annualized	5 Years Annualized	1 Year
Endowment Fund	8.8%	10.6%	27.2%
Policy Benchmark	7.5%	9.4%	24.9%

For more...

including a copy of Kamehameha Schools' audited "Consolidated Financial Statements and Supplemental Schedules" for fiscal year 2020-2021, please visit www.ksbe.edu/annualreports.



Continuing Ke Ali'i Pauahi's Legacy of Giving



ALOHA MAI KĀKOU,

Communities are only as resilient as the people in them. This year, in the face of many challenges and changes wrought by the pandemic, our school, our students and our donors have emerged with a deeper appreciation for each other and a greater sense of purpose.

The fact that the last 12 months marked a record high for giving through the Pauahi Foundation is evidence of our community's fortitude, resilience and commitment.

KS leadership, staff and alumni, along with community partners, stepped up to accept the kuleana of uplifting our lāhui. The generosity of our donors enabled the Pauahi Foundation to award 416 scholarships; each one represents the chance for our haumāna to pursue higher education and for an entire community to benefit from their accomplishments as 'ōiwi leaders.

Recognizing the impact that education can have on a community's long-term ability to thrive was the motivation behind 2,265 scholarship gifts from our current hui of donors, including a planned gift of \$4 million from **John A. Meyer KSK'51** and his wife, Georgia J. Meyer.

The degree of generosity and the level of resilience we have seen this year is nothing short of inspiring. At the same time, with more than 1,900 scholarship applicants, we know that there are many more deserving students who need assistance than there is funding available to help them.

With your help, we will continue Ke Ali'i Pauahi's powerful legacy of giving and emulate her commitment to building a thriving lāhui, especially when times are tough.

Me ka ha'aha'a,

Pono Ma'a

Director, Office of Advancement
Executive Director, Pauahi Foundation



Foundation impact

\$7.13M

TOTAL DONATIONS

923

TOTAL NUMBER OF DONORS

416

SCHOLARSHIP AWARDS

17

NEW ENDOWMENT SCHOLARSHIP FUNDS



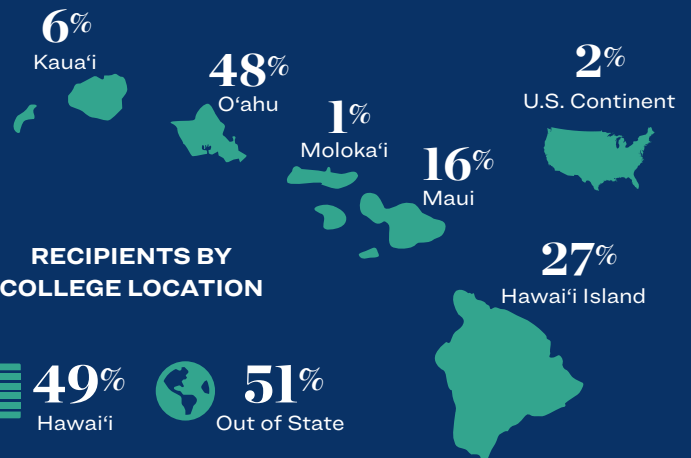
\$639,092

TOTAL DISBURSED TO POST-HIGH RECIPIENTS

RECIPIENTS BY FIELD OF STUDY

- 28% Science
- 19% Liberal Arts, Arts and Social Sciences
- 11% Business
- 9% Education
- 9% Health Care
- 7% Hawaiian Culture, Language and History
- 3% Law
- 3% Computer and Information Systems
- 3% Engineering
- 3% Other
- 2% Communications and Journalism
- 2% Vocational and Technical Studies
- 1% Environmental Sciences

RECIPIENTS BY HOMETOWN



RECIPIENTS BY COLLEGE LOCATION





Why we give

KA HĀ'AWI MANAWALE'A

Alaka'ina Foundation

Paying it back by paying it forward

Against a soundtrack that included songs by slack-key legend Gabby Pahinui, 1971 brought about a groundswell of renewed focus on Hawaiian culture, language, and activism. Around the same time, the first ever Pipeline Masters surf competition was held, Zippy's opened a second location in Kaimukī, and Eddie Aikau was named Lifeguard of the Year.

Graduating seniors from Kamehameha Schools Kapālama in 1971 realized a sense of responsibility to do something meaningful with the remarkable opportunity they'd been given. Fifty years later, a group of proud alumni from that class continues paying it forward.

“At a heartfelt level, we recognize the impact of the education we received; and, as beneficiaries of Ke Ali'i Pauahi's legacy, we feel it's our kuleana to help steward the next generation,” said **Michael “Kimo” Wong KSK'71**, president of the board of the Alaka'ina Foundation. The nonprofit was founded in 2013 and is run by Kamehameha Schools Class of 1971 alumni.

Along with board members **James “Kimo” Bacon KSK'71** (VP and executive director), **William “Bill” Villa KSK'71** (secretary), and **David “Dave” A. Mortensen KSK'71** (treasurer),

the classmates are committed to purpose-driven acts of philanthropy that have a significant and positive impact for nā pua a Hawai'i, the youth of Hawai'i. “Our mission,” Bacon says, “is to build leadership programs and opportunities for Hawaiian haumāna with the aptitude and vision to lead our communities going forward.”

The chance for KSK '71 alumni and their families to come together in 2021 was not only a cause for celebration that brimmed with food and song and storytelling, it was also an opportunity to mark the special reunion by making a collective gift of \$1 million to the Pauahi Foundation for post-high scholarships.





John A. Meyer KSK'51 and Georgia J. Meyer

A legacy of giving

“‘A'ohe mea koe ma kū'ono” translates as “nothing remains in the corners,” and describes one who is extremely generous, giving freely without reservation. This ‘ōlelo no‘eau fittingly describes **John A. Meyer KSK'51** and his wife, Georgia.

The magnitude of their generosity is reminiscent of Ke Ali'i Bernice Pauahi Bishop, who through a remarkable and distinct vision, left the vast expanse of her lands for her people, ultimately creating innumerable educational opportunities and a tremendous legacy.

Meyer, a former baseball and football student-athlete, would go on to marry Georgia and become a systems computer consultant and supporter of the Pauahi Foundation. In 2012, in loving memory of her late husband, Georgia established a scholarship in their names to support Kamehameha Schools graduates pursuing areas of interest to the couple, including athletics and engineering (John's interests) and business and finance (reflecting Georgia's).

The Meyers understood just how impactful an endowed gift could be. In eight years since establishing the scholarship fund, they have supported close to 40 students in their educational journeys.

“Donors have so many options, and they decided to invest in the future of Hawai'i and that means a lot and gives me encouragement to give back to the community,” says **Kia'i Keone KSK'21**, a 2021 John A. and Georgia J. Meyer scholarship recipient.

Unbeknownst to the Pauahi Foundation, John and Georgia had intentions to reach even more deserving students with their generosity by naming the foundation as their main beneficiary and leaving a planned gift upon Georgia's passing: the largest gift ever donated to the Pauahi Foundation in the amount of \$4.035 million. Following in the footsteps of Ke Ali'i Pauahi and her model of philanthropy, through the stewardship and care of their gift, the Meyers will continue to bring hope and opportunity to students for years to come.

*Give with
Pauahi*

LET US COME TOGETHER AND TRANSFORM LIVES IN OUR HAWAIIAN COMMUNITY!

Help us continue Pauahi's legacy of giving by volunteering time and/or making a donation to the Pauahi Foundation to help uplift the Hawaiian community.

LEARN MORE AT PAUHI.ORG.

2020-2021

Donors

We are grateful for the generosity of donors who have included the foundation in their charitable giving. Because of these gifts, Pauahi Foundation was able to disburse 416 scholarship awards to aspiring Native Hawaiian students this year. As an educational institution that transforms lives within the Hawaiian community, our mission has never been more relevant. Our giving hui celebrates the breadth and diversity of our donors and the impact of their support. Mahalo for entrusting us with your gifts and helping to further Ke Ali'i Pauahi's legacy.

KEY † Deceased
S Kamehameha Schools staff

We are deeply humbled and grateful for Kamehameha Schools alumni, faculty, and staff who made a gift to Pauahi Foundation this fiscal year in addition to their dedicated service. All donors listed are recognized for contributions made during the fiscal year from July 1, 2020 to June 30, 2021.

KA HUI KŪLANIHĀKO'I

\$10,000 OR MORE

Anonymous (1)
Ahahui o Nā Kauka
Julian K. Ako⁶¹
Alaka'ina Foundation
Charles Schwab
Pamela L. Ching⁷⁷
Dr. & Mrs. Francis K. Chun⁷⁹
Compass Group USA, Inc.
Wendell B. K. Davis⁷¹
William⁴⁹ & Judith Fernandez
Kamehameha Schools Hawai'i Parents & Teachers 'Ohana
Kevin⁷⁷ & Janice Kekoa
Drs. Andy & Natalie L.⁹² Lee
Lianne K. Lee Loy⁸²
Leimalama Lee Loy
William Henry Kekoa McClellan⁰² & Nicole Makana Shook McClellan⁰³
Myron J. Mitsuyasu
Na Ali'i Consulting & Sales LLC.
Nakupuna Foundation, LLC.
Nakupuna Solutions
Crystal K. Rose^{75, S} & Richard S. Towill
Schwab Charitable Fund
Timothy⁵ & Marie Slottow
Glenn & Lytle⁷⁴ Takemoto
Robert & Jane⁶⁵ Terry
The Georgia J. Meyer Trust
The Harry and Jeanette Weinberg Foundation
Kara N. Wong Ramsey⁰¹

KA HUI UA LOKU

\$5,000 – \$9,999

Laszlo Bock & Family
Dorrance Family Foundation
Fidelity Charitable Gift Fund
Kalino Foundation / Kalino LLC.
Kamehameha Schools
Kamehameha Schools Association of Kaua'i
Lauren Nahme⁵
Brian & Debbie⁷² Okamura
Pacific Fleet Submarine Memorial Association
Clarence⁵⁴ & Mary Soong
Travis⁸⁹ & Joby⁸⁹ Tom
Towill Family Foundation
Warrior Printing, LLC.
Livingston Jack Wong, Jr.⁵ & Kimi Oyama
Cody K. Yancey⁰⁶

KA HUI UA NĀULU

\$2,500 – \$4,999

Joyce Ahuna-Ka'ai'ai
Ameriprise Certificate Company
Hiram⁵⁹ & Trudi de Fries
Hawaiian Electric Company Inc.
Randall⁶⁸ & Nancy Hee
Dr. Claire K. Hughes⁵⁴
Kamehameha Schools Maui Campus Parent Teacher Student 'Ohana
Kamehameha Schools Student Activities - Maui Campus
Dr. Lori Ann Kim⁹⁷
R. Kawika Makaanani⁶⁶
Lawrence^{87, S} & Heather Park^{92, S}
Ben⁵ & Cindy Salazar
Snyder Family Foundation

Oswald⁵⁰ & Ku'ulei⁵⁰ Stender
Frank & Sharen Sylva
The Gaylord K. L. H. Ching Trust
The J. Taylor Crandall Revocable Trust
Frank A. Trusdell⁷⁶
Lisa K. Wisotzky
Nelson Wong^{87, S} & M. Kāhealani Nae'ole-Wong^{87, S}
Burton S. Yuen⁵

KA HUI KUĀUA

\$1,000 – \$2,499

Anonymous (7)
Gloria J. Adams
Byron & Linda AhHee
Benjamin⁹⁰ & Patricia Ancheta
Michael⁶⁶ & Chu Cha Asam
Violet W. Awana
Jmi Bassett Asam⁹⁷
Benevity Inc.
Beppu 'Ohana: Len, Wanda, Mark⁹⁶, Sarah⁹⁶ & Mackenzy²⁴
Dr. & Mrs. Lawrence Brede, Jr.⁶¹
Sean⁷¹ & Mary Browne
Timothy & Audrey Ann Kanani⁸⁶ Burke
Zandin U. M. Burke¹²
Dr. Sandra K. Chock-Eng⁶⁶
Duane⁷² & Bette Chun
City & County Of Honolulu - Division of Motor Vehicles
Loy Cluney⁶⁰
Kevin Cockett^{84, S}
Ian-James K. Custino^{95, S}
DA Davidson Wealth Management
Shelby K. DeCosta⁹⁹
Cynthia DeRosier
Carisa L. K. Duffy⁹²



Kelly Beth Dukelow⁵
 Eli Lilly and Company Foundation
 Shirley V. Ennis⁴⁶
 Deborah⁵ & Fred Erskine
 Fidelity Brokerage Services, LLC.
 Marcy E. Fleming⁵
 Dr. Stan Fortuna, Jr. & Nancy Fortuna
 Friends of Hawai'i Robotics
 Ronald & Halima⁵⁶ Goo
 Todd V. Gray⁵
 Donald G. Harvey⁵
 Moana C. Heu⁷⁴
 Paula Hirai⁷¹
 Amona K. Ho
 Darrel⁵ & Denise Hoke
 Brandon B. Hong⁰²
 Denise L. R. Iseri-Matsubara⁸¹
 Jon T. Iwatani⁵
 Darla M. Ka'auamo
 Kahiau Pacific LLC.
 Micah^{87,5} & Joelle Kāne
 James⁶⁶ & Valerie I.⁶⁶ Kardash
 M. Mālia Kau⁹¹
 Nālani Blane Kealaiki^{94,5} & William Kealaiki⁹⁴
 Kenneth⁴⁷ & Wanda⁵⁰ Kimseu
 Arlene Kon⁵⁴
 Michael⁸⁵ & Xann Maile⁸⁴ Kuenzli
 Bobbie P. Lau^{84,5}
 Dr. Kyrra Lau-Eglinton
 Alison L. Leary⁵
 Herbert Levy
 Kim Lorch & Diana Malotte
 LPL Financial
 Drs. Emanuel Drechsel & Teresa Makuakāne-
 Drechsel⁷¹
 Dr. Kendall L. Mann⁸²
 Martin P. Martinson⁶⁸
 The Mau 'Ohana^{91,5}
 McDonald's Restaurant of Hawai'i, Inc.
 Louis⁶² & Anna Marie Medeiros
 Merrill Lynch, Pierce, Fenner & Smith Inc.
 Jennie K. Molina⁵¹
 Christopher Kala'e Leong⁰¹ & Beth
 Nakamura⁰¹
 Jason O. Navarro⁸⁹
 Eli D. Pane'e, Jr.⁵⁹
 Pearl Harbor Hawaiian Civic Club
 Diane J. Plotts
 Col. Michael E. Rawlins Sr.⁶³
 Dana K. Sato⁵
 Matthew R. Sgan
 Shell Oil Company Foundation
 Lloyd H. Sing^{89,5}
 Walter^{84,5} & Tammy Thoemmes, III
 Wallace K. Tirrell⁵³
 Creighton T. H. Tuzon⁸⁹
 Vanguard Charitable
 Glenda⁶¹ & Sam White
 Keevin Kawai Winchester⁰⁵
 Grant Yamashita⁵

KA HUI KO'I AWE

\$500 – \$999

Anonymous (3)
 Heidi K. Aceret⁹⁰
 Glennie G. Adams^{78,5}
 Keith Kalani Akana⁷⁵
 Rachelle L. Andrade⁵
 Douglas⁶⁸ & Meta Katherine Apo
 George K. Apo, Jr.⁵⁶
 William⁶⁶ & Phyllis⁶⁶ Beimes, III
 Keolu^{76,5} & Luann⁵ Bento
 Summer Lee U. Bloomfield⁹⁴
 Marsha⁷⁰ & Bob Bolson
 Alyssa K. B. Braffith^{70,5}
 Colin K. Brede⁷⁰
 Bright Funds
 Courtney M. Brown
 Ramsey K. Brown⁰⁵
 Frederico L. Cachola, Jr.⁵³
 Winfred⁷⁶ & Cindy^{76,5} Cameron
 Dr. Kimberly L. M. Carvalho-Faucher⁸⁵ & Cory
 Faucher
 Jared K. Ching⁹⁰
 Dr. Taran^{95,5} & Nizhoni Chun
 Constance Collins⁵
 Ronald A. Cox⁵
 Charles K. Crabb
 Stanley C. Dahlin⁶¹
 Buddy Dees, Jr.
 Patricia Dees
 Andrea E. L. Deutsch⁹⁷
 F. Mahina Paishon Duarte⁹⁴ & Thomas Kā'eo
 Duarte⁵
 William Kalani Fong⁹¹
 John & Nancy Fox
 Leah K. Freitas⁰¹
 Frontstream
 Alike Fujimoto⁹⁴ & Haunani^{97,5} Fujimoto
 Evan Golly⁵
 Reginald & Kanani Young^{90,5} Harris
 A. Kilohana Hirano^{94,5}
 Kenneth E. Ho
 Ross & Nikki⁵ Iwata
 James & Rita Jaeger
 Kirstin A. Kahaloa^{01,5}
 Anthony⁶⁵ & Diana Kam

Kamehameha Schools Maui Campus
 Noah M. Kauhane⁹⁰
 Earl⁵ & Patricia Kawa'a
 Sydney⁶⁹ & Kawehi⁷⁶ Keli'ipule'ole
 Kevin K. Kidder⁹⁵
 Michael⁶⁵ & Patty Kincaid
 Jarom H.⁹⁷ & Kelly Anne P.⁹⁸ Kitashima
 Kau'i M. Kitashima⁹⁸
 Leon Edwin Pili H.^{02,5} & Keoho'okapalai
 Keoho⁰² Kitashima
 Shon Kitashima⁹³
 Ian P. K. S. Kosora⁹¹
 Frances Laikona⁵
 Randy A. Lake^{73,5}
 Naomi Losch⁶³
 Tedmund K. Ma'a^{82,5}
 Manuheali'i Inc.
 E. Ann McBirnie⁵⁴
 Freidalane K. M. Menezes⁵⁹
 Elliot K. Mills⁵
 Carol J. Moad⁷²
 Jessie Moniz⁰⁰
 Nā Pua Mae'ole O Kamehameha
 Gabriel L. Naeole^{85,5}
 Euphemia Nagashima
 Cara Nakamura⁵
 Marc C. Naval⁹⁶
 Sheryl L. Nicholson⁵
 Benjamin & Geralyn Nihipali, Jr.
 Carlton K. S. Pang⁶⁶
 Raleigh H. Reid⁷¹
 Michelle N. K. Sasaoka^{84,5}
 Scott W. H. Seu⁸³
 Dennis⁷⁶ & Lauren Shak
 Carrie E. Shoda-Sutherland⁵
 Race V. K. Skelton⁹⁸
 Henry & Dancine^{79,5} Takahashi
 Randolph & Debora⁶⁶ Tandal
 Maleko L. P. Taylor⁰⁰
 Jack & Pam Terry
 The Benevity Community Impact Fund
 Melvin & Linda Tom
 Bran-Dee Torres^{93,5}
 Charles K. Wahineho'okae, Jr.⁶⁶
 Rick & Noelani Whittington⁶⁶
 Roy C. Wilson, Jr.⁶⁶
 Benjamin⁴⁹ & Muriel⁵⁰ Yin
 Calvin⁷⁴ & Eleanor L.⁷⁴ Young





KA HUI NOE

\$250 – \$499

Anonymous (9)
 Vladimir Abadzhiev⁵
 Gail M. A. Abrena-Agas⁰⁰
 Pualani S. Akaka⁶⁶
 William K. Akina⁰⁵
 Valerie M. Amby-Kamakeeaina^{94,5}
 Deborah Y. Ancheta⁷¹
 Natalie M. Andrade⁹⁵
 Raynard L. Apana
 Lynn Apo⁶⁴ & Scotty Bowman⁵²
 Pamela L. Asuega-Keawe⁵
 Noelani T. Balai⁷⁰
 Bank of America Foundation, Inc.
 Pakalani J. Bello^{97,5}
 Augusta-Helen L. Bento^{50,†}
 Sarah N. Beppu⁹⁶
 Wesley Blackstad⁰⁰
 Duke & Ashlynn⁵ Book
 Kenten S. Boro¹⁴
 Shane L. L. Briones⁰¹
 Ella L. & Carlton E. Brooks
 Vann & Dolores⁶⁵ Camacho
 Martha Carrasquillo⁵
 Brian Y. Chang
 Dr. Ross H. Chang⁷⁴
 Jonathan⁵ & Diana Char
 Daniel K. Chong⁹⁴
 Kyle K. Chong⁰¹
 Michael K. Chong⁹⁷
 Ikaia¹⁶ & Cindy Chu
 Maile Cluney⁵
 Kimberly H. Coleman⁵
 J. Richard Cook
 Mark N. Crabbe⁸⁰
 Elizabeth Jane Culp⁷⁸
 Kelsey M. Dees
 Kehaulani E. Delostrico^{82,5}
 Kelly K. DePonte⁷¹
 Leiomalama E. Desha⁷⁴
 Samuel⁹³ & Chanel⁹³ Desilva
 Bryan L. DeVore⁵
 Moya K. Donahue^{80,5}
 Sherylann M. L. Enomoto⁹⁰
 Ronald & Corleen Estes
 Hailama^{89,5} & Elena⁹³ Farden
 Blaine & Jean⁵ Fergerstrom
 Hualani J. Fernandes⁵⁷
 Rinda J. Fernandes⁶⁶
 Tatiana K. Fox^{00,5}
 Bill & Marcia Grace-Mitchell
 Priscilla K. L. H. Hanna⁶⁵
 Chelsey K. Harbottle⁰²
 James K. Hardy⁰⁴
 Van C. Hare, IV⁸⁶
 Racine Hee⁸⁹



George L. Heiligman⁶⁶
 Elizabeth Hokada
 Ashley M. Howell¹⁰
 Koreti Vahinelani Ili⁵
 Tamotsu Iwaishi
 JAM Construction
 Coleen I. Ka'anehe^{78,5}
 Aurora K. Kagawa-Viviani⁹⁹
 Chester⁵⁷ & Sybil Kahapea
 Joseph⁷¹ & Susan⁷¹ Kahiapo, Jr.
 Alike K. Kaiwi⁹³
 Alison F. Kajiwara⁵
 Shea-Lah K. Kama⁵
 Napualokelani Kamakele⁹⁵
 Michelle A.^{00,5} & Isaiah K.⁰⁰
 Kamali'i-Ligsay
 Duke & Tracy⁵ Kaneakua
 Bernard⁷³ & Holly Kaopuiki
 Yumi Kasukawa⁵
 John⁷¹ & Suzette⁷¹ Kaulukukui
 Bruce & Lisanne^{82,5} Kekuewa
 T. Hoku Keolanui⁷⁸
 Roberta H. Kikuchi⁷¹
 Shelli Kim⁵
 Emmett⁹⁰ & Mei Li Kinney
 Ronelle K. Kopp⁷⁵
 Rawlette Kraut⁶⁶
 Dennis Kuewa⁶⁸
 Justine C. Lafata⁹¹
 Nadine T. Lagaso⁵
 Frank & Lee Choo Lau
 Joan L. Lee
 Ann I. Leong⁶⁶
 Kainoa J. Lincoln⁹⁵
 Puanani Lindsey⁶¹
 Maureen Liu-Brower⁷¹
 Delia K. Long⁸⁹

Karen C. Loo⁵
 Brenda Lowrey
 Bettina Lum⁵
 Felicia A. Lum
 Tex & Darlene⁸⁹ MacAuley
 Wanda C. Machado⁷¹
 Ha'aheo B. Mansfield⁶⁶
 Maria Massa⁵
 Carmen L. Matsuura⁵
 Shannon K. K. McCandless⁰³
 Michelle L. Medeiros^{87,5}
 James & Lisa⁷⁶ Mendoza
 Keikilani Meyer⁵
 Darin K. Mijo⁵
 Jamee M. Miller⁵
 Jherell A. Miller⁰¹
 'Ohana of L. Kaiponohea
 Moses Sr.^{79,5}
 Maile E. Mundon^{89,5}
 Dianne A. Muraoka⁵
 Claudette P. Na'au'ao⁵⁶
 Elaine A. Nu'uhiwa⁵
 Nathanael C. Oda⁰³
 Andrea P. Oka^{86,5}
 Carol-Ann M. Ota⁵
 Alvin Oyadomari⁵
 Austin L. Pacheco
 Joshua D. Padilla⁰⁸
 Michael J. Pagan⁷⁰
 Aileen K. Pane'e⁶⁰
 Patrice Y. Perrin⁸³
 Anna Peters⁵
 Lesley Ann N. Pico-Lilio⁵
 Gabriel⁶³ & Evelyn Pua'a, Jr.
 Paula J. Purdy⁵
 Emily Luana Pu'u^{94,5}
 Sarah L. Razee⁵

Ku'uilei Reyes^{57,5}
 Robotics Education & Competition
 Foundation
 John Roxburgh, Jr.⁶⁶
 Sharon T. Roxburgh⁷³
 Laurie U. Seto^{77,5}
 Robbie Ann K. Shimose⁵
 Mavis M. H. Shiraishi-Nagao⁵
 Sheldon R. Smith⁸⁵
 Linda M. L. Soma⁶¹
 Kapiolani M. Street⁰⁷
 Mark A. Sweat & Nancy L. Ahuna-
 Sweet
 Barbara Taum
 Gail Taylor
 Ruth N. Teanio⁵
 The Benevity Community Impact
 Fund
 Michael & Penny Tibbitts
 Bobbie L. Tom^{79,5}
 Rick Akau & Sabrina Toma⁵
 C. Buffy Trugillo^{91,5} & William
 Trugillo
 Keikilani R. Uehara^{95,5}
 United Way of Brevard County, Inc.
 United Way of the Columbia-
 Willamette
 Awapuhi K. Uu⁷⁹
 Chucky⁶⁰ & Barbara Von
 Arnswaldt
 Sandee Nohea Walker^{96,5}
 Margaret Walls
 Bruce⁶⁷ & Charmain⁶⁷ Wong
 Georgia H. Wong⁷⁰
 Wallace Wong⁷⁷
 YourCause, LLC.



KA HUI 'OHU

\$100 – \$249

Anonymous (11)
 Terry-Lynn K. Adams-Kaonohi^{91, 5}
 John & Sharrie⁶³ Ah Chick, Jr.
 Grace Ah Yo
 Liz^{93, 5} & Kauhi⁹³ Ahana
 Ainsley A. Ahlo⁷⁰
 Gailyn A. Ahuna-Lum⁵
 Racquel K. Aikala⁵
 Dr. Jeffrey Akaka⁷¹
 Jonah H. Akaka⁵
 Benjamin⁷³ & Momi⁷⁹ Akana
 Moana Akana^{62, 5}
 Rita P. Akana⁶⁶
 Arlette Aki⁶¹
 Clarence & Patricia⁶¹ Ako
 Jason J. Alexander⁵
 Jaysha K. K. Alonzo-Estrada¹⁵
 Nicole Altman⁵
 Paulyne K. Anakalea⁶³
 James & Tina⁷⁶ Andrade
 Irene K. Andrews⁷⁰
 Carol R. Anguay⁵
 Wendy Antoncich⁶⁸
 Todd⁸⁵ & Jaime^{86, 5} Apo
 Michel S. Arakaki⁵
 Raine M. A. Arndt-Couch⁰¹
 Robyn Au⁷²
 Jennifer K. Awai^{83, 5}
 Bank of America Employee Giving Campaign
 Kevin L. L. Baptist⁷⁰
 Loretta Baptist
 Leslie H. Barker
 Darcy K.⁸² & Jillinda A. Barrios
 Maryann Barros⁷⁰
 Ben & Charlotte Bautista
 Douglas S. Bell⁶¹
 Caroline K. Belsom⁶⁶
 Brucella H. Berard⁵⁶
 Dr. Carl Kalani Beyer⁶⁴
 William⁶² & Rowena⁶² Blaisdell
 Lahela M. L. Blake⁹⁶
 Leah H. Borsting^{98, 5}
 John⁷⁵ & Karen Brandt
 Suzanne G. Brinkman⁵
 Kevin H. K. Brown⁸⁸
 Jeffery⁷⁶ & Kaleilehua Bruchal
 Paula Ann Burgess-Tauala⁵
 Kekoa Burns⁷⁶
 Mr. & Mrs. Stephen Kaufman⁸⁵
 Andrew⁶³ & Darlene Carlmark
 Visaluana Castillo
 Evangeline J. Catipon⁵
 Elizabeth Cawrey⁵
 Lauwaeomakana D. Cazimero⁶⁷

Jennifer I. M. Chalaire⁹⁷
 Janel Chandler⁵
 Paula C. H. Chang⁷³
 Donna Ching⁷³ & Richard Leman
 Jay M. Chow⁵
 Lindsey P. Chun-Hori^{04, 5}
 Laurene Cockett
 County of Hawai'i Department of Finance
 County of Kaua'i Department of Finance
 Erika K. Cravalho-Meyers^{95, 5}
 Alan R. & Joni Pulani⁷⁵ Yee Cumpston
 CyberGrants on behalf of Lawrence Livermore National Lab
 Scott K. De Sa⁵
 Mary Cockett DeLapp⁵
 Lauren DeRosier
 Jose Jimenez & Megan DeRosier Jimenez
 Mary Ann P. Dorsey⁶⁸
 Kirra N. Downing⁰¹
 Amber Driscoll⁵
 Nani Dudoit^{78, 5}
 Georgette Dun⁷¹
 Lei-Ann M.⁷³ & Ronald M. Durant
 Lyla K. Eldredge^{79, 5}
 Mae Enfield⁵
 Teru A. Enomoto Heyl⁷⁹
 Guy⁵ & Julie Enriques
 Carlton K. Fellezs⁷¹
 Maverick Fernandes⁵
 Kenneth S. Fink⁵
 Velma Fish⁵⁶
 Adele S. Flores⁵
 Erica H. Fontaine⁸⁶
 Bradley & Jennifer Fortuna
 Craig & Breanne Fortuna
 Gaynell M. Fuchs
 Allan & Gail Fujimoto
 Raynette P. Fukui⁷⁰
 Raejean K. Gamiao⁹⁵
 Danette^{61, 5} & Billy Gardner
 Kristy L. Genuario⁹⁵
 Jennifer L. Gilchrist⁹¹
 Shellene H. Gilman⁶¹
 Iwalani S. Goldstein⁷⁵
 Ardis Gomes⁷⁰
 Farrah-Marie K. Gomes⁹⁴
 Dr. Brian Goodyear
 Dr. J. Noelani Goodyear-Kaopua⁹²
 Barry Goren
 Roger⁶¹ & Bernadette Grace
 E. K. Hale⁶⁸
 Darrell M. Hamamura⁵
 Joseph A. Hamel⁵
 Ormond Hammond
 Moana M. Hanawahine^{90, 5}
 William Harris⁵

Marilyn P. Hasegawa⁷⁵
 Lloyd & Michelle Hataishi
 Henry Lee Hui
 Floyd & Amelia⁶⁸ Hew Sang
 Tanya Hewahewa^{86, 5}
 Ann M. Higashi
 Chris⁶³ & Gwen Hilbus
 Michelle L. Honda⁷⁰
 Healani Huch⁶⁶
 Dana K. Huddy⁵
 Chlorie Igne⁵
 Stacey A. Imamura⁵
 Inter-Island Appraisal Co.
 Kani Jahnke
 Bernadette K. James⁷¹
 Jonathan D. Janus⁵
 Emma K. Jenny¹⁷
 Thomas⁸⁵ & Sarah Jenny
 Alberta R. Jitchaku⁶⁶
 Dr. Samuel Kamuela Ka'ahanui⁶⁷
 Daniel K. Y. Kaanana⁰⁸
 Steven K. Kahili⁷⁶
 Patti-Marie T. Kahoeapu⁹¹
 Ramona L. L. Y. Kaiwi⁷⁸
 Lana Smith Kalahiki⁷⁰
 Kim L. Kalama⁷¹

Samuel H.⁷¹ & Elizabeth Kalama
 Chad K. Kalehuawehe⁵
 Mabelmae Kamahele⁶⁶
 Alva K. Kamalani⁷⁰
 Bernadette Kamana'o⁷³
 Leanne S. Kami⁵
 Julie L. Kaomea⁸⁵
 Michelle T. Kapule⁵
 Muriel K. Kashiwa
 William T. Kay, Jr.⁶⁸
 Melissa L. Kehano^{94, 5}
 Ellie M. Keola⁸⁰
 Theodore⁷⁰ & Naomi Kesaji
 Darrell^{89, 5} & Amy Kim
 P. Kapena Kim⁷⁰
 Laurence M. Kiyohiro⁷⁵
 Be-Jay Kodama
 Noella J. K. Kong⁷⁰
 Aaron Koseki, Jr.
 Liula E. Kotaki⁰¹
 Serge Krivatsy⁵
 KS'92 Makeke
 Leonard F. Ke'ala Kwan, Jr.⁵
 Curtis⁷⁰ & Danette Lam Ho
 Kyleena M. Lamadrid
 Chahati L. F. Lancaster⁰⁶





Richard Laroche
 ShirL Laroche
 Jeanne Lau⁷⁸
 Lawnie U. Lau⁸⁹
 Rose L. Lau⁸⁶
 Chris Laumauna^{85, 5}
 Mike Miki & Mary Lau-Miki
 Herling R. Lee⁵
 William⁶⁶ & Joanne Lee
 Keahi K. Leong⁸⁹
 Diane Leslie⁷⁰
 Donna M. Leu⁷⁶
 Sandra L. Lighter-Jones⁵
 Shannon P. Li'iili'i⁵
 Pearl P. Ling⁷⁶
 Arthur⁵⁷ & Rhoda Loebl
 Kiley⁷⁰¹ & Shelby⁷⁰¹ Loo
 Julia N. Lowe^{94, 5}
 Jamie Lum⁸⁰
 Mark E. MacInnis⁵
 Sandra N. Mactagone⁷⁰
 Todd Madden
 Miki Maeshiro⁵
 JoAnna P. Mahi'ai¹⁰¹
 Donna H. H. Mahuna^{90, 5}
 Leah K. Mariani^{93, 5}
 Marina Florist Hawai'i Kai
 Mahealani Matsuzaki^{86, 5}
 Tamia M. McKeague⁵
 Kaleialoha Medeiros⁵
 Robert⁵ & Shawna⁵ Medeiros
 Michael Medici
 Linda N. Mitsunaga⁷⁷
 Jean Miyashiro-Saipaia⁵ & I'a
 Saipaia
 Sharon Miyata⁵
 Abraham K. Mokuui, Jr.⁸²
 Elizabeth Moore⁶¹
 Don W.⁷¹ & Debbie Morgan
 Harolyn K.⁷⁵ & Richard M.
 Morgenstein
 Steven⁸³ & Carolyn Morikawa
 Peter K. Morishige
 Bricen Moritsugu⁵
 David A.⁷¹ & Elaine⁷¹ Mortensen
 Dayna C. K. Mortensen⁹²
 Michael K. Moses⁵
 Lorna H. Motas⁷¹
 Savanna N. Muravez¹⁰³
 Grace T. Murphy⁴⁸
 Kahele Nae'ole¹⁰⁰
 Erin Nanea Nahuina^{83, 5}
 Delmann P. Naipo⁸⁶
 Kehaulani Nakamoto⁷⁰
 Lucille H. Nakamura⁷⁰
 Luana S. Nakano⁶⁶
 Awapuhimele P. H. Napoleon-
 O'Brien^{98, 5}
 Network for Good

Ryan Ng⁵
 Courtney A. Nichols⁵
 Leanne A. Nikaido⁵
 Lois Nishikawa⁵
 Claudine Nishimura⁹¹
 Guy & Kirsten Nishimura
 Linda I. Nishimura⁷⁰
 Kapohauolaokalanikiakia Noa⁵
 Keola⁷⁹ & Elaine Nosaka
 N. Cookie Numazu⁵
 Ashley K. Obrey⁷⁰¹
 Robert^{65, 5} & Tara Oda
 Katrina-Ann R. Oliveira⁹²
 Michael Oliver⁵
 Nathan O. Owens⁵
 Brandie L. Oye⁹¹
 Leland K. Ozawa
 Joanne M. Pa'alani⁷⁶
 V.L. & Joslyn⁶⁶ Packett
 William Mahealani Pai⁵
 Toni L. Palermo⁷⁰
 Sarah Parsons
 Katherine Lokelani Patrick^{72, 5}
 Naomi U. Patterson⁷⁶
 Melanie Yin Pecsok⁷⁵
 Sydney H. K. Perreira⁵
 Ryan K. Pila¹⁰⁶
 Robin Prais⁵
 Jamie K. U. Prem¹⁰⁵
 Stefan E. Press⁵
 Victor Punua⁵¹
 William Puou, III⁷⁰
 Kanoelani T. Pu'uohau^{105, 5}
 Sheleen E. Quisquirin^{95, 5}
 Treva K. Ranadey¹⁰⁰
 Dawn N. Rego-Yee⁹⁶
 Karen H. F. Richardson⁷⁰
 Jon Rickard⁶³
 Stason K. Rodrigues⁹³
 Michael Saines⁵
 Gaynell K. Sala⁷¹
 Michele P. Sales⁹³
 Ken & Tina Salva Cruz
 Faith K. Sandi⁷⁰
 Braeden K. Santiago¹¹
 Kathleen P. Schwartz⁸¹
 Kelly Shere
 Billi M. Smith⁷⁰
 Kea Smith¹⁰⁶
 Peter⁷¹ & Lorna⁷⁰ Soberano
 Sheldon K. Sonido¹⁴
 Francis⁶⁶ & Karen⁶⁶ Soon
 Kelsea K. Soon¹⁰¹
 Alexandres-Joan K.^{109, 5} & Cody¹⁰³
 Souza
 Troy L. Souza⁵
 Matthew K. Spencer⁹⁸
 Peter Stack
 Therese C. Staszko⁶⁵

Melissa Stewart Rodrigues^{97, 5}
 Karen L. F. Stine⁷⁵
 Structural Pest Control, Inc.
 Wessely I. Sur
 Leiali'i Tagupa⁵
 Brian K. Takemura⁵
 Malcolm K. K. Tam⁶¹
 Tony C. Tam⁵
 Beth Y. Taone⁵
 Keani Taylor⁶¹
 Michael & Elizabeth Terhorst
 The Walt Disney Company
 Foundation
 Samuel Thomas⁵
 Jefferson Tilley
 TisBest Philanthropy
 Robyn L. Titcomb⁹¹
 Michael Tom⁵
 Thomas M. Tom
 Donald & Wainani⁸⁷ Tomich
 Jodie Y. W. Toyota^{85, 5}
 Daniel^{105, 5} & Kristin Truong
 Amber⁹⁶ & Buddy Tupou
 Colleen H. Uahinui⁷⁶
 Anne Uchida
 Bradley J. Uy⁵
 Phil K. Uyehara⁵
 Kaulana⁵ & Jaclyn⁵ Vares
 Kawika A. Villa⁹⁶
 William⁷¹ & Renae⁷² Villa
 Constance K. Warrington⁶⁸
 Bruce K. Watson⁹²
 John & Rose Mae⁶⁶ Watterson
 Shelley H. Weatherwax⁸⁸
 Joyce P. Weiscopf⁶⁶
 Pastor Brian Welsh
 Kalani H. Wilmington⁷⁶
 Johnnie F. Wilson⁵
 Kimberley C. Wilson⁵
 Mr. & Mrs. Norman S. K. Wilson,
 Jr.⁷⁵
 Shayne K. Wolfe^{14, 5}
 Bernadine L. P. Wong^{81, 5}
 Heather L. Wong⁸⁸
 Jamie K. Wong⁵
 Lin H. Wong⁷⁰
 Summer L. P. Wong-Leong⁹⁵
 Jerrellyn L. Yamada⁶⁴
 Leslie L. Yap⁹⁹
 Joylynn I. L. H. Yarbrough⁸⁶
 Sienna Yoshida⁸⁶
 Thomas Y. Yoshida⁵
 Scott K. Yoshihara
 Lynda K. Yoshimura⁷¹
 Kevin Young
 Sandra Young
 Kelly W. K. Zane⁸⁷

KA HUI KILIHUNE

\$1 - \$99

Anonymous (11)
 Maurice Nakahara & Donna
 Aana-Nakahara⁷¹
 Charlissia K. Abihai⁹²
 Tobby Abraham⁵
 Cecilia Adams
 Wendilee L. Adkins⁸³
 Ulima F. Afoa⁵
 Darren & Sonya⁵ Ah Chong
 Heather Ann W. Ahue⁷⁶
 Alma & Lory^{91, 5} Aiwohi
 Merlene M. Akau⁸¹
 Kevin⁷⁸ & Lee Ann⁷⁸ Akiona
 Matthew⁸⁹ & Karen^{91, 5} Alamida
 Burrelle H. Alamillo⁹⁰
 Leora K. Almstrom
 Rosanne F. Anderson⁷⁰
 Edward⁹⁴ & Darice^{94, 5} Apo
 Cherlene L. H. Arakawa⁷⁰
 Jamie Ares
 Erica Arikawa⁷¹
 Yuuko Arikawa-Cross⁹⁵
 Shane M. Arquette⁵
 Derrick⁵ & Debbie⁵ Asing
 Nathan⁷¹ & Cheryl Ann⁵ Au
 Ali'i Baoy
 Angela P. Baptista⁵
 Margaret Silva Barbazon⁷⁰
 Jennifer Baum^{101, 5}
 Melissa A. Beatty⁹⁴
 Brandi Beaudet⁵
 Noela Bishaw⁶⁸
 Brenda Blake-Maika⁶⁷ & Tau
 Maika
 Cameron A. Brown
 Daniel Bustamante⁵
 Regina J. Byrom⁵
 Lance C. Cagasan⁵
 Jocelyn J. Calma⁵
 Pearl L. Cantrell⁷⁶
 Dane R. K. Carlson^{104, 5}
 Mina Casey-Pang⁵
 Maurice Chalker
 Shaun Chillingworth^{99, 5}
 Vanessa Ching⁵
 Jacob Chinn⁵
 Elisa Chong⁵
 David⁶⁶ & Lurline⁶⁵ Choy
 Marjorie Y. Choy
 Lawrence & Diane⁵ Chun
 Ian N. Chun⁹⁵
 Carol Chung
 George Churchill⁵
 Danny S. Clark



Erin^{99,5} & Puanani⁰¹ Cobb-Adams
 Frederick K. Cobb-Adams^{94,5}
 Marian Cohen⁷⁰
 McKinley Collins⁵
 Kapaelani S. Comstock^{01,5}
 Ellen M. Cordeiro⁵
 Angela Jo L. Correa Pei⁵
 Tim Cosgrove
 Brendan M. Courtot⁵
 Sara O. Cox⁰¹
 Bonnivere J. Crabbe
 Kelly I. Cua⁵
 Kaulana E. K. Dameg^{97,5}
 Tracy A. I. Damitio⁸⁷
 Kevin⁹¹ & Twyla Dang
 Marguerite H. Daysog⁵
 Thomas & Desiree^{78,5} Del Rosario
 Ka'ilialoha K. Dias-Blake¹⁵
 Kumalie Dias-Blake¹⁹
 J. Stacey Eaton⁵
 Emerita Ellazar-Hernandez⁵
 Shannon Endo⁵
 Christine Enrico⁵
 Priscilla Erece Veilleux⁵
 Lana Gaye Ernesto⁶³
 Cynthia R. Fernandez⁵
 Kimokeo N. Ferreira⁰²
 Harry Fong, Jr.⁶⁶
 Michelle R. Fong Siouxson⁵
 Joel & Carla Fortuna
 Renee K. Franco^{91,5}
 Doug & Karen⁷⁸ Gabbert
 Desiree Galbiso
 Puanani Mundon Gonsalves⁵⁴
 Goodfellow Bros, LLC.
 Kulamanu M. L. Goodhue⁹⁵
 Po'okela Hanson^{01,5}
 Nialani S. Harris⁷⁰
 Ginet U. Hayes⁹³
 Charla-Mae Helm⁵
 James & Barbara Herras
 Lori M. Hieger⁸⁹
 Kehaulani Hikila⁵
 La-Li Hing⁷⁰
 The Ho 'Ohana⁷²
 Eric⁷⁰ & Kathy Holck
 Patricia Holmes⁵
 Richardson Smith & Linda⁶⁶
 Holt-Smith
 Ho'omana Foundation
 Terry Hosaka
 Connor K. Howick¹¹
 Ashley K. Iaea^{03,5}
 Lauren Imada⁵
 Chad K. Imano
 Roslyn D. Ioane
 Willette K. Jackson⁷⁰
 Gary K. Jay⁷³

Darrell⁵ & Paula Johnson
 Virginia Ka'ai
 Rashanti K. Ka'awaloa⁵
 Skye L. M. Ka'ina²¹
 Gail Kalbfleisch
 Ryoko Kalua
 Ltc. Peter Kama⁵³
 Keenan K. Kamae⁹³
 Kamehameha Schools Class of
 1972
 Kim K. Kana'iaupuni^{81,5}
 Beatrice Y. Kane
 Ruth T. Kaneko⁰³
 Kris K. Kaopuiki⁹⁰
 Debbie Kato⁵
 Todd K. Kaulukukui⁹⁵
 Lorraine K. Keahi
 Kahekili Kealoha
 Ko D. I. Kealoha^{01,5}
 Tina Keane⁵
 Victoria L. Keith⁵⁷
 Wendy M. Kekahio⁵
 Genelynn K. P. W. Kelley⁵
 Jodie⁵ & Vince Kimura
 King Solutions Inc.
 Ernell L. Kinilau
 Annabelle Knep
 Sonya A. H. Kurisu⁵
 Justin Lacche
 Shannon E. K. L. Ladd⁹⁰
 Jennifer Y. I. Lam⁸¹
 Paul Hughes & Barbara Lee
 Megan M. Leong⁰²
 Cody Lestelle
 Lestelle Group LLC.
 Jade Ling⁷⁸
 Gabi Lopez
 Jason Louie
 Tony⁵⁸ & Ann Lum
 Kaylynd M. Lyman
 Herbert Mahelona^{85,5}
 David K. P. Mahoe⁰⁶
 Diedre T. Maika⁵
 Darryl-Jean K. Mark⁶⁹
 Adrian L. Marquez⁹⁶
 Kristi L. Martines⁵
 Brandon T. Masumura⁵
 Carolyn Haunani Maunu-
 Hendrix⁷⁰
 Jean Mahealani McClellan⁶⁶
 Alan & Alisha⁰¹ Medeiros
 Maile N. Miki⁰⁹
 Kayla E. Miller
 Newton E. K. Miller⁷³
 Kelly-Jean Miral⁵
 Micah M. Mizumoto^{10,5}
 Wanda L. Moa⁷⁰
 Lauren Morita

Melanie P. Mundon^{91,5}
 Harry J. Murray⁵⁶
 Jessica A. Nagato⁵
 Todd Nakagawa
 Helen K. F. Nakata⁷¹
 Howard⁶¹ & Patricia Naleimaile
 Sheryl Nalani A. Nalua⁵
 Derek Nekoba⁵
 Cassie N. Neubauer
 Kanealii^{94,5} & Jacqueline⁹⁴ Ng-
 Osorio
 Sally Y. Nhom⁵
 Claire L. Niheu-Yong⁵
 Samuel^{99,5} & Kainui Nihipali
 Mae C. Nishimura⁵
 Lihla Noori⁵
 Jason H. Nurre⁹⁷
 Linda Oda
 Frank Oducado⁵
 Francis & Leilani⁴⁸ Oliveira
 Lucy E. Olmos⁷⁰
 Sabrina K. Ongos⁵
 Amy T. Ono⁹²
 Leighton Pahukula, Jr.⁹¹
 Star Nani Pai⁶⁸
 Lisa Pakele⁹¹
 Roger D. Patao⁵
 Desiree Ann Noelani Pavao^{85,5}
 Stacia Peleholani⁷³
 Dr. Laura Pendergrass
 Tuyen Pham
 James Phelps
 Dolores M. Pinao
 Joseph M. Plencner⁵
 Vickie Punua-McGinnis⁷⁸
 Patti Rabacal⁵
 Darcel Rankin Genobia
 Susan Rearic
 Ryder S. Richardson
 Blanche L. Richmond⁷⁷
 Julie A. Riveira⁵
 William & Kananionapua⁵
 Romena
 Robert⁶⁷ & Tana⁵ Rosehill
 Moana Roy
 Kelii J. Ruth¹⁰
 Shea & Rachelle^{94,5} Saffery
 Ernest Saldua⁵
 Jose A. Saucedo⁵
 Marco Sausa⁵
 Ivan See⁵
 Aurencio Seguritan⁵
 Wilhelmina Serrao⁵
 Joseph & Yvonne⁷⁵ Shanks
 Jodi Y. Shimabukuro⁵
 Amy Shirk⁵
 Nicole K. K. Shishido⁰¹
 Andaline K. Simon^{75,5}

Michael⁶⁷ & Emily Sing
 Anna M. Slagle⁸⁵
 Hau'oli M. Smith-Lopez⁹⁸
 Corey Sokoloff
 Bowe M. Souza^{07,5}
 Jacqueline R. Sovde⁵
 Shannon M. Spencer⁵
 Darmaine N. Stant⁵
 The Stewart 'Ohana⁹¹
 Larry M. Sumida
 Jeannette M. T. Sunn^{98,5}
 Michelle L. Swan⁵
 Blaine Tajiri⁵
 Beth K. Takamori⁵
 Sage Takehiro⁵
 Jan Tanaka⁵
 Alana K. M. Taniguchi⁰¹
 Kekoa A. Taparra⁰⁸
 Target Corporation - C/O
 Cybergrants, LLC.
 Ynes L. Tascott⁵⁶
 R. Malia Taum-Deenik
 Tracy Terlep⁵
 Linda Thompson⁵
 Cory B. Tom⁵
 Tomczyk 'Ohana
 Thelma Tomich⁵
 Aline Tran⁵
 Lan H. Tu⁵
 Cakaunivalu Tulewa-Gibbs⁵
 Beryl K. Tyau⁷³
 Shane Ueki
 Carol & Frank Valant
 Shane K. Valdez⁰³
 Lisa Van Kirk⁵
 Alika L. Victor⁸¹
 Diane C. Victor⁵
 Danette H. Victorino⁶⁸
 Jon Viela⁵
 Timmy⁹⁶ & Myra Wailehua
 Scott Watanabe⁵
 Tory T. K. Watanabe^{11,5}
 Keri Ann K. Watson⁹³
 Kimo T. Weaver⁵
 Deborah-Jean H. Wentzel^{85,5}
 Bronson West⁵
 Kanoe A. Wilson^{91,5}
 Henry Kalani Wong^{74,5}
 Sheryl Wong
 Eugene & JoAnn^{71,5} Kam
 Natasha Wright
 Karen Yasuhara⁵
 Letitia U. Yee⁶¹
 Kelly Yogi⁵
 Stephen K. Young⁸²
 Daniel K. Yuen⁹⁹
 Shirley A. Yuen



I mua nā haumāna

SCHOLARSHIP RECIPIENT SPOTLIGHT



Jax Awong'21
Honolulu Community College

Edwin P. Murray Scholarship
Ka 'Ōlelo Hawai'i o Kamehameha Scholarship

.....
"I will be studying aeronautical maintenance technology. I enjoy working with my hands and believe that a trade seems to be the best route for me. I hope to make my family proud, become a positive contributor to my 'ohana, and a good example to other young Hawaiians as Pauahi wanted her pua o Kamehameha to be."



Cheyenne Bajo'21
New York University

Kamehameha Schools Imua 77 Scholarship
Virginia Aulani Rowan Scholarship

.....
"I will concentrate on nursing, entrepreneurship, political science and creative writing. I plan on coming back to Hawai'i to work as an endocrinology nurse practitioner, to aid the community of underprivileged keiki who have been diagnosed with diabetes. Mahalo nui loa no nā mea a pau."



Ewalea Dameg'21
Pacific University

Kamehameha Schools Hawai'i - Parent Teacher Organization Scholarship
Frank and Ruth Midkiff Scholarship
Mary Atherton Richards Scholarship
Tauati 'Ohana Scholarship

.....
"I hope to major in psychology and sociology and go into law. I want to be able to give people who feel as though they don't have a voice the opportunity to be heard and I believe that being a lawyer will allow me to do that. Mahalo for the opportunity to follow my dreams and take that knowledge back to benefit Hawai'i."



Makoia Inciong'21
California Institute of Technology

Douglas K.K. Chung Memorial Scholarship
John A. and Georgia J. Meyer Scholarship

.....
"I am incredibly grateful for your generosity that enables me to attend my dream school, to major in mechanical engineering, and to one day work as an aerospace engineer. I will strive to be an excellent representative of Hawai'i and Kamehameha Schools, and continue my pursuit of knowledge."



Mahina Kaomea '21
Stanford University

DeWitt Wallace Scholarship
Kamehameha Schools Class of 1963 Scholarship
Mary Atherton Richards Scholarship
Pauahi Scholars

“I am thankful for your thoughtfulness in uplifting generations of young k̄anaka students like myself. With the support of your generous scholarship funds, I will study indigenous education and environmental science with the hope of one day starting a community-based, food-sovereignty, and sustainability school in my ‘āina.”



Haily Nascimento '21
University of Hawai'i at Mānoa

Hawaii Lodging and Tourism Association Pouhana Hokele Scholarship
John A. and Georgia J. Meyer Scholarship
Mary Atherton Richards Scholarship

“I will be attending the University of Hawai'i for a degree in hospitality/tourism management and sustainable development, through which I hope to provide a better system in the tourism industry. I also plan to contribute to the perpetuation of hula, 'ōlelo Hawai'i, and mele. Mahalo piha!”



Joshua Parker '21
Harvard University

Denis Wong & Associates Scholarship
DeWitt Wallace Scholarship
Kamehameha Schools Class of 1960 Scholarship
Kamehameha Schools Class of 1962 Scholarship
Native Hawaiian Chamber of Commerce Scholarship
Theodore Vierra Scholarship

“With your support, I'm able to attend my dream school and pursue a STEM degree in computer science, economics, and environmental engineering. My dream is to become a tech entrepreneur in the field of clean energy and found a socially responsible tech company in Hawai'i. I am so thankful for your generosity.”



Sophia Perry '21
Northwestern University

Kamehameha Schools Class of 1961 Scholarship
Kamehameha Schools Hawai'i - Parent Teacher Organization Scholarship
Nanea Scholarship

“Mahalo for investing in my future! I will be studying media communications and journalism, learning all I can about using media to promote collaboration and problem-solving. Your generosity will allow me to gain the knowledge, skills, and experiences necessary to serve my community as a journalist.”



Raven Sylva
Chaminade University of Honolulu

Goldman Sachs/Matsuo Takabuki Commemorative Scholarship
Kamehameha Schools Class of 1991 Scholarship
Kamehameha Schools Class of 2005 Scholarship
Villa 'Ohana Ho'ihō'i Scholarship
Yasuko Mitsuyasu Master of Accounting Scholarship

“Mahalo donors, I am able to obtain my MBA in accounting, and using my future expertise as a CPA, I want to help benefit underserved populations and be a role model to future generations there. These scholarships will play a role in the ripple effects that better various communities in Hawai'i.”



David Visperas '21
Stanford University

DeWitt Wallace Scholarship
Warren Nakupuna Ah Loo Memorial Scholarship

“With your support, I'm able to attend the college of my dreams. I intend to major in data science and use my mathematical skills to create algorithms that can derive the best way for students to learn and revolutionize Hawai'i's education system. You have changed my future for the better, and I am so, so grateful.”



MEANINGFUL IMPACT

2020-2021 Pauahi Foundation Scholarship Recipients

1982 Green Machine Scholarship
Kamehalani Ortiz

2010 Legends Scholarship
Daphne Fox⁰⁵
Maya Rosof¹⁹

2017 Great Whites Named Endowment Scholarship
Cade Kane²¹

Admiral Kihune Scholarship
Sharlei Iranon²¹

Ali'i Chang Scholarship
Mathew Dye

Allen A. Bailey Scholarship
David James
Kiana Kauwe⁰³
Shelley Weatherwax⁸⁸

Amona and Suzel Ho STEM Leaders Scholarship
Rachael Meisner⁰⁷

Anne H. Myers Scholarship
Ashley Lee¹⁶

Ashley Meleana Joy Scholarship
Maveric Abella¹⁵

Bernice Leinani Kuakini Ahlo and Henry Keanu Ahlo Scholarship
Celeste Cravalho

Blaise A. Kepo'okeloekakai Baldonado Scholarship
Alya-Joy Kanehailua¹⁷

Blossom Mossman Nary Scholarship
Makakoa Pelletier-Finau²¹

Bruce T. and Jackie Mahi Erickson Scholarship
Alya-Joy Kanehailua¹⁷

Charles "Chuck", Craig and Fred Rudolph Named Endowment Scholarship
Spencer Waite

Charles Cockett 'Ohana Scholarship
Gus Cobb-Adams

Charles P.M.K Burrows Hui Lama Science Scholarship
Dakota Kaupu²¹

Charles S. Iwata, Jr. Memorial Annual Scholarship
Alisha Kaluhiokalani

Choy-Kee 'Ohana Scholarship
Joby Lum²⁰

Christine Alicata/Daisy Bell Memorial Scholarship
Randall Ching²¹

Class of 2020 Aloha Aina Scholarship
Zachary Lorenzo²⁰

Col. Curtis Kekoa (KS '40) and Nenita Maldonado Kekoa Scholarship
Riku Iwai-King²¹

Dan and Rachel Mahi Educational Scholarship
Wailana Ulukita

Daniel Kahikina and Millie Akaka Scholarship
Taylor Takahashi²⁰

David A. Mortensen KS '71 D.A.M Scholarship
Sabbath Seibert²¹

David and Julia Desha Scholarship
Jada Chang
Pakelakahiki Ka'au'a²¹
Joelene Kuaana¹⁴

Makana Melchor²¹
Naleikaehukai Molitau²¹
Onipaa Pung²¹
Bruce Torres Fischer
Dylan Valentine²⁰
Natalie Walsh
Kekailani Wong Yuen¹⁶

David Kalani Goldstein, KS '70 Scholarship
Helena Marie Bakutis-Kekaula

David Lorch Music Scholarship
Angela Chock²¹

Denis Wong & Associates Scholarship
Katia Barricklow
Kanoelani Dodd
Samuel Kippen⁰⁷
Joshua Parker²¹

Desha-Mulholland Scholarship
Kanani Araki²¹
Bailey Ventura²¹

DeWitt Wallace Scholarship
Mahina Amoy²¹
Mahina Kaomea²¹
Joshua Parker²¹
David Visperas²¹

Dolly and Ross Wert Named Endowment Scholarship
Christian Arakawa

Dorothy Martin Scholarship
Joy Nu'uhiwa²¹

Douglas and Sandra Akina Scholarship
Bailey Ventura²¹

Douglas K.K. Chung Memorial Scholarship
Mason Carvalho²¹
Makoa Inciong²¹

Dr. Lori Ann Kim Scholarship
Tylee Calicdan²¹

Dr. Pauline Frederick Scholarship
Lola Duropan²¹

Dwayne "Nakila" Steele Scholarship
Heuaolu Sai-Dudoit

Edward Lapsley Ho'opa'a Mau Scholarship
Stephan Callion-Nizo²¹



Edwin Mahiai Copp Beamer Scholarship

Angela Chock²¹

Edwin P. Murray Scholarship

Jax Awong²¹
Ioane Boshard²¹

Elaine "Dollie" Mortensen KS'71 Kaumuali'i Malama 'Aina Scholarship

Kaianne Feurtado

Eli D. Panee Sr. and Aileen E. Panee I Mua Scholarship

Ashley Lee¹⁶

Elizabeth Kuulei Bell Molokai Education Scholarship

Shannon Kaahanui

Eric N. Jacobsen Memorial Scholarship

Ross Ledda

Flik Independent Schools Dining Scholarship

Stephan Callion-Nizo²¹
Randall Ching²¹

Floro and McCarthy Family Big Blue and White K Scholarship

Tihani Jayme Kalaaukahai
Renee Lockwood

Francelia Stillwell Sportsmanship Scholarship

Talia Suzuki²¹

Frank & Ruth Midkiff Scholarship

Ewalea Dameg²¹
Brock Malani²¹
Tess Monden²¹
Alexandra Perry²¹
Toby Williams²¹
Joshua Worth²¹

Gail and Allan Fujimoto Scholarship

India Kawelolani Ching

George Hi'ilani Mills Scholarship

Kainoa Calistro-Allen¹²
Tatiana De La Cruz¹⁶
Natalie Lau
Alissa Maree Nakamura
Trisha Nobriga
Richard Rista¹⁵
Madison Williams¹⁵

George T. Kanalu Young Memorial Scholarship

Tiana Pereira¹⁷

Gladys E. and Clifford T.F. Chun Scholarship

Breanna Marie Taguchi
Carina Tanaka¹⁹

Gladys Kamakakuokalani 'Ainoa Brandt Scholarship

Ramzen Coakley
Kamaleikuhalia Krug
Shanamae Melton
Tenille Nagareda¹⁷
Patricia Plunkett
Tiare-Jennings Vaughan-Darval
Kiera-Lynn Viela¹⁷
Aonani Vitich-Fernandez

Goldman Sachs/Matsuo Takabuki Commemorative Scholarship

Jennifer Marie Carter
Christina Kaleiwahea
Kihaaeanu Sai¹²
Raven Sylva

Harold Turney & Dorothy Gillett Memorial Scholarship

Angela Chock²¹
Kylie Kwak²¹

Hartwell Hewahewaokalani Lee Loy Sr. Scholarship

Melody Cosma-Gonsalves⁹³

Hawai'i Independent Energy Scholarship

Aaron Castillo

Hawaii Lodging & Tourism Association Don Ho Legacy Named Endowment Scholarship

Brennan Mendez¹⁹

Hawaii Lodging and Tourism Association Pouhuna Hokele Scholarship

Bryden Ka'auwai
Haily Nascimento²¹

Helen Desha Beamer Scholarship

Brooke Mcclaverty-Shigaki²¹

Henry Laumaewa & Clara Kapeka Kanamu Memorial Named Endowment Scholarship

Sidney Spencer²¹

Henry Lee Scholarship

Kala'i Kanno²¹

Herbert Kealoaha Keppeler Scholarship

Malulani Paiste²¹

Holomua Scholarship

Tiare-Jennings Vaughan-Darval

Homer David Kahilialau and Thelma Mabara Burge, Sr. Scholarship

Taecia Akana¹⁷
Aiponokamoku Valente

Ho'omāka'ika'i Named Endowment Scholarship

Theo Baker

I Mua Mālama JROTC Ka'awaloa Takemoto Scholarship

Ron Jacob Lardizabal
Michaela Patdu²¹

Irmgard Farden Aluli Scholarship

Heuaolu Sai-Dudoit

Isaac and Mary Harbottle Scholarship

Gus Cobb-Adams

Iwalani Carpenter Sowa Scholarship

Matthew Mendonza⁰⁶

Jalene Kanani Bell 'Ohana Scholarship

Kilihea Kanekoa

James Bacon, KS '71 "Little Bacon Urban Achievers" Scholarship

Isaiah Kaohe

Jared Keanu Sylva Alvarez Named Endowment Scholarship

Taylor Arashiro-Mamuad²¹

Johansen 'Ohana Scholarship

Kalaimaikala Aukai¹⁶

John A. and Georgia J. Meyer Scholarship

Amber Ikalani²¹
Makoa Inciong²¹
Kia'i Keone²¹
Haily Nascimento²¹
Cade Trujillo²¹

John and Reiko Kuga Phillip Scholarship

Kylie Kalauli

Johnny Pineapple Scholarship

Theo Baker

Joseph A. Sowa Scholarship

Taecia Akana¹⁷

Joseph David Ahuna Scholarship

Sage Iona
Kassie Tarpley

Joseph Nawahi Scholarship

Ryse Akiu¹⁴
Alakai Iaea-Russell
Kamaleikuhalia Krug

Ka 'Olelo Hawai'i o Kamehameha Scholarship

Jax Awong²¹

Ka Papa o Kanaono-Kumaono Class of 66 Scholarship

Sydney Decosta²⁰
Sean Lau

Kahalekuiinaihe Scholarship

Kiera-Lynn Viela¹⁷





*Kahu Wendell B.K. Davis and
Mama Kahu Maria K.K. Davis
Aloha Ke Akua Scholarship*
Siera Morales²¹

Kalino Foundation Scholarship
Haley Nakawatase¹⁸
Keahilele Reyes

*Kamehameha Schools Alumni
Association – Maui Region
Scholarship*
Kahealani Garcia
Mikiiala Maynard

*Kamehameha Schools Alumni
Association – O’ahu Region
Scholarship*
Courtney-Ann Ah Lo Keohuloo⁰⁵
Sabbath Seibert²¹

*Kamehameha Schools Alumni
Association West Hawai’i Region
Scholarship*
Pascal Cabuzel

*Kamehameha Schools
Association of Maui Scholarship*
Hannah Aiwohi²⁰
Manuel Castro
Kahealani Garcia
Mikiiala Maynard

*Kamehameha Schools
Association of Teachers and
Parents Moloka’i “Elua”
Scholarship*
Kade Apuna¹⁸
Shannon Kaahanui

*Kamehameha Schools Class of
1950 Scholarship*
Koloikeao Anthony¹⁹

*Kamehameha Schools Class
of 1952 “Na Hoaloha O
Kamehameha” Scholarship*

Mathew Dye
Trisha Nobriga

*Kamehameha Schools Class of
1958 Na Mea Waiwai a Pauahi
Scholarship*
Kaimana Bunker

*Kamehameha Schools Class of
1960 Scholarship*
Tatiana De La Cruz¹⁶
Amber Ikalani²¹
Haley Opiopio
Joshua Parker²¹

*Kamehameha Schools Class of
1961 Scholarship*
Ocean Akau²¹
Sophia Perry²¹

*Kamehameha Schools Class of
1962 Scholarship*
Haley Nakamura
Joshua Parker²¹

*Kamehameha Schools Class of
1963 Scholarship*
Mahina Kaomea²¹
Kamaleikuhalia Krug

*Kamehameha Schools Class of
1965 Scholarship*
Makanilealea Davis

*Kamehameha Schools Class of
1967 Ka Lei O Kaiona Scholarship*
Isaiah Kaohe
Isaac Nahakuelua

*Kamehameha Schools Class
of 1968 “Ka Poli O Kaiona”
Scholarship*
Kuuleihua Funn
Kekailani Wong Yuen¹⁶

*Kamehameha Schools Class of
1970 Scholarship*
Charlynn Adversalo
Taylor Demotta
Keolalani Larson
Kapri Tulang-De Silva¹⁸

*Kamehameha Schools Class of
1971 “Get Chance” Scholarship*
Sabbath Seibert²¹

*Kamehameha Schools Class of
1972 Scholarship*
Taylor Chee¹³
Delsha Clift Mahi

*Kamehameha Schools Class
of 1973 “Proud to be ’73”
Scholarship*
Leiohu Chun
Kyla Zimmermann

*Kamehameha Schools Class of
1974 Scholarship*
Katia Barricklow
Noah Furtado
Alakai laea-Russell

*Kamehameha Schools Class of
1975 Scholarship*
Delsha Clift Mahi
Kamalu Kaawa
Liana Kanno
Kenneth Niheu

*Kamehameha Schools Class
of 1976 Kealohapau’ole
Scholarship*
Nalehuaopuna Donlin

*Kamehameha Schools Class of
1979 Ho’okupono Scholarship*
Quinn Akina⁰⁹

*Kamehameha Schools Class of
1980 Scholarship*
Krystel Mata

*Kamehameha Schools Class of
1983 Scholarship*
Kylee-Ray Tactacan

*Kamehameha Schools Class of
1984 He Waiwai Nui Ka Lokahi
Scholarship*
Kyle Moriguchi¹⁸

*Kamehameha Schools Class of
1991 Scholarship*
Raven Sylva

*Kamehameha Schools Class of
1993 Na Lei Kukui Scholarship*
Devan Wilhelm

*Kamehameha Schools Class
of 1994 Named Endowment
Scholarship*
Terran Kaleiwahea¹⁰

*Kamehameha Schools Class
of 1995 Ka Ua Kipuupuu
Scholarship*
Alisha Kaluhiokalani

*Kamehameha Schools Class
of 1996 Named Endowment
Scholarship*
Bronson Azama

*Kamehameha Schools Class of
1997 Scholarship*
Taylor Moniz²¹

*Kamehameha Schools Class of
2001 Scholarship*
Tihani Jayme Kalaaokahi
Aldomonick Samuseva



*Kamehameha Schools
Association of Kaua’i
Scholarship*
Logan Ayau²¹
Makani Brun²¹
Makena Buhk²¹
Mason Carvalho²¹
Mason Doo²¹
Taylor Nishimoto²¹
Keliko Pa²¹
Jeslie Pavao²¹
Alexandra Perry²¹
Deven Tapucol²¹

*Kamehameha Schools Class
of 1954 Na Kanalimakumaha
Scholarship*
Kainoa McCauley
Nevan Watanabe¹⁷

*Kamehameha Schools Class of
1956 Scholarship*
Keolalani Larson
Malulani Paiste²¹

*Kamehameha Schools Class of
1957 Scholarship*
Ridge Ka’auwai²¹
Kaci Stokes²¹



Kamehameha Schools Class of 2003 Na Pua 'Akala a Pauahi Scholarship

Mikiāla Maynard

Kamehameha Schools Class of 2005 Scholarship

Raven Sylva

Kamehameha Schools Hawai'i - Parent Teacher Organization Scholarship

Elysa Abellera²¹
Dillon Ah Chong²¹
Ocean Akau²¹
Kanani Araki²¹
Xander Calicdan²¹
Candace Cavaco²¹
Justin Chow²¹
Ryenne Cordeiro²¹
Bethany Correia²¹
Ewalea Dameg²¹
Raynn Dangaran²¹
Dayanee Faust²¹
Destiny Hirae²¹
Christian Hironaga²¹
Brock Malani²¹
Angela Martin²¹
Makakoa Martinez²¹
Siera Morales²¹
Misha Namohala²¹
Osiana Pacheco²¹
Janelle Chloe Pakele²¹
Keli'inowelo Perry²¹
Sophia Perry²¹
Dylan Rosehill²¹
Caley Tadeo-Etrata²¹

Kamehameha Schools Imua 77 Scholarship

Cheyenne Bajo²¹

Kamehameha Schools Kapālama Association of Teachers and Parents Ho'ihi Aku, Ho'ihi Mai Scholarship

Jireh Amina²¹
Kekuawela Tauala²¹

Kamehameha Schools Kapālama Class of 2006 Named Endowment Scholarship

Kylie Watson¹⁰

Kamehameha Schools Maui Parent Teacher Student Organization 'A'apueo Scholarship

Hannah Aiwohi²⁰
Sheldon Dudoit-Caban²¹
Brycen Hanada²¹



Kamehameha Schools Na Hoaloha Class of 1986 Named Endowment Scholarship

Kauaolilikoikalani Moses

Keaholoa Investment Finance Scholarship

Nainoa Watanabe²¹

Kekuna'ai'ali'i Scholarship

Noah Furtado
Kiana Kauwe⁰³

KGMB/KHON Video Production Scholarship

Hezekiah Kapua'ala²¹
Tahina Tomaszek²¹

Kunuiakea Scholarship

Tehani Baculpo
Zion Basque¹⁷
Lanson Kupau¹⁴
Zachary Lorenzo²⁰
Steven Mau¹⁶
Eryn Nagaishi
Kassie Tarpley

Lance (KS '83) & Andrea Hussey (KS '83) Leong Scholarship

Elliott Markell¹⁷

Lee Ann DeLima Scholarship

Pearl Bachiller²¹
Sheldon Dudoit-Caban²¹

Lee Thomas Pacific Island Scholarship

Haley Lyman²¹

Lena Kaulumau Machado Haku Mele Fund

Angela Chock²¹

Lokomaika'i Scholarship

Joseph Jimenez

M. Kimo Wong KS'71 and Shelly Wong and Noe Noe Wong-Wilson KS'68 'Ohana Scholarship

Tuupuaalamakahonua
Helekahi
Kenneth Niheu

M.E. Bacon KS'72 Uncle Herb Kupuna Lehua Lee-Loy Weatherwax Aloha 'Āina Scholarship

Kapuaoluumaikalani
Peleiholani-Blankenfeld²⁰

Mahi'ai Scholarship

Kaianne Feurtado

Makaloa Scholarship-UG

Keahi Kahui
Alexis Keo-Long²¹
Makakoa Martinez²¹
Stephanie Scoville¹⁶
Natalie Walsh

Makuakane Inspirational Educator Scholarship

Leiohu Chun
Melody Cosma-Gonsalves⁹³
Nicholas Lum¹²
Kayla Ontai

Mary Atherton Richards Scholarship

Elysa Abellera²¹
Ocean Akau²¹
Mahina Amoy²¹
Pearl Bachiller²¹
Tylee Calicdan²¹
Candace Cavaco²¹
Bethany Correia²¹
Savannah Rose Dagupion²¹
Ewalea Dameg²¹
Raynn Dangaran²¹
Leah Delos Santos²¹
Caitlyn Duarte²¹
Dayanee Faust²¹
Jordynn Haumea-Thronas²¹
Lauren Kalama²¹
Mahina Kaomea²¹
Aleah Kay²¹
Mila Kehano²¹
Abigail Macalintal²¹
Tess Monden²¹
Taylor Moniz²¹
Malina Mossman²¹
Haily Nascimento²¹
Nalea Nitta²¹
Malulani Paiste²¹
Alexandra Perry²¹
Kaci Stokes²¹
Sofia Stupplebeen²¹
Caley Tadeo-Etrata²¹
Bailey Ventura²¹

Michael "Mikey" Miyake Scholarship

Danielle Ann Bonilla²¹
Serena Lovell²¹

Mr. John Riggle Scholarship

Duke Tatom²¹

Myron & Laura Thompson Scholarship

Chloe Ah Nee²¹
Ramzen Coakley

Na Pua Mae'ole o Kamehameha Class of 1953 Scholarship

Hezekiah Kapua'ala²¹

Nanea Scholarship

Sophia Perry²¹
Kanoë Wilson⁹¹

Native Hawaiian Chamber of Commerce Scholarship

Joshua Parker²¹
Mackenzie Plunkett¹⁹
Jordynneelynsly Stevens
Jeremy Yee²⁰



Odell Hastings Slagel Named Endowment Scholarship

Kealakai Matsumoto

Paiea Kane/Wahine Scholarship

Osiana Pacheco²¹
Keli'inowelo Perry²¹

Patrick L. Hiram - John S. Freitas Scholarship

Kanoelani Dodd

Pauahi Scholars

Keana Amian²¹
Candace Cavaco²¹
Savannah Rose Dagupion²¹
Karl Hanson²¹
Skye Kaina²¹
Teani Kaluhikaua²¹
Mahina Kaomea²¹
Hezekiah Kapua'ala²¹
Carlos Masuko²¹
Osiana Pacheco²¹
Keli'inowelo Perry²¹
Brynn Rodrigues²¹
Sofia Stupplebeen²¹
Teija Tuitele²¹
Connor Viela²¹
Nainoa Watanabe²¹
Joshua Worth²¹

Pauahi Scholars - Liko Lehua

Xander Calicdan²¹
Angela Martin²¹

Pauahi Scholarship

Kawaiolaakealii Kapuni²¹

Paul Pua'a 'Ohana, Paul Moses Murray & Malia Murray Grant

Makanilealea Davis
Ale'a Vendiola²⁰

Pa'upena Named Endowment Scholarship

Mila Kehano²¹

Pono & Louise Beamer Scholarship

Angela Chock²¹
Kylie Kwak²¹

Pop Diamond Scholarship

Kaya Wong-Mcgee²¹

Pu'uwai Hau Kila Scholarship

Keahilele Reyes

Randy Wayne Ahuna Scholarship

Skye Apao

Rebecca Lamahilani Haalou Medeiros Scholarship

Kealakai Matsumoto

Reuben Lee Kwai Brandt Scholarship

Cade Kane²¹

Richard Lyman, Jr. Memorial Scholarship

Bailey-Ann Lee
Tyler Hayashida²¹

Richard Marks Named Endowment Scholarship

Celeste Cravalho

Roy L. Cachola Scholarship

Isaiah Lorenzo²¹

Sanborn 'Ohana Ho'omau Scholarship

Chaz Gouveia

Sarah Keli'ilolena Lum Konia Nakoa Scholarship

Aiponokamoku Valente

Stanley & Janet Zisk Scholarship

Sydney Decosta²⁰
Shyla-Ann Keaunui
Jena Shimotsu

Stanley and Besse Fortuna Memorial Scholarship

Ocean Akau²¹

T.C. Yim Named Endowment Scholarship

Nalehuaopuna Donlin

Tauati 'Ohana Scholarship

Ewalea Dameg²¹
Brock Malani²¹

Taylor Nanea Pangan-Fergerstrom Memorial Scholarship

Savannah Cerezo²¹

Tennyson Keolalani Tom Scholarship

Alana Chang²¹
Kainani Wagner²¹

The McClellan Family Scholarship

Mahina Amoy²¹

Theodore Richards Scholarship

Kylie Kwak²¹
Siera Morales²¹

Theodore Vierra Scholarship

Joshua Parker²¹

Trudi and Hiram de Fries Educational Scholarship

Kainoa Calistro-Allen¹²

U'ilani Stender Scholarship

Kuuleihua Funn
Keolalani Larson
Kapri Tulang-De Silva¹⁸
Ashley Wong

Ula Baker Sheecha Scholarship

Kiponaonalani Dougher²¹
Tiari Faagata¹⁸
Jillian Ikehara¹⁹
William Thompson²⁰
Kalākea Yamaguchi²¹

USS Kamehameha Scholarship

Gabriella Kanoa
Ross Ledda

Vaughn G.A. Vasconcellos KS '71 Scholarship

Ryseh Akui¹⁴
Joshua Worth²¹

Villa 'Ohana Ho'ihoi Scholarship

Tehani Buchanan
Raven Sylva

Violet K. '32 & Henry T. Hughes, Jr. Scholarship

Gus Cobb-Adams

Virginia Aulani Rowan Scholarship

Cheyenne Bajo²¹

Waipa Nishimura Memorial Scholarship

Haylee Hulihee²¹
Kalākea Yamaguchi²¹

Wallace & Barbara Ka'awaloa Scholarship

Jakob Loscalzo²¹
Joy Nu'uhiwa²¹

Warren Nakupuna Ah Loo Memorial Scholarship

David Visperas²¹
Joshua Worth²¹

William K. and Julia T. Kapololu Named Endowment Scholarship

Taisamasama Kaiminaauao-Eteuati²⁰

William S. Richardson Commemorative Scholarship

Hiilei Casco¹⁴
Tehani Louis-Perkins¹⁴
Tiana Pereira¹⁷

Winona Beamer Scholarship

Brooke Mcclaverty-Shigaki²¹

Yasuko Mitsuyasu Master of Accounting Scholarship

Cole Kamisugi¹⁷
Raven Sylva

Yin Ohana Named Endowment Scholarship

Kolten Gusman

Zillah Young Memorial Scholarship

Angela Chock²¹





MIA WAKA LU



Kamehameha
Schools®

ksbe.edu